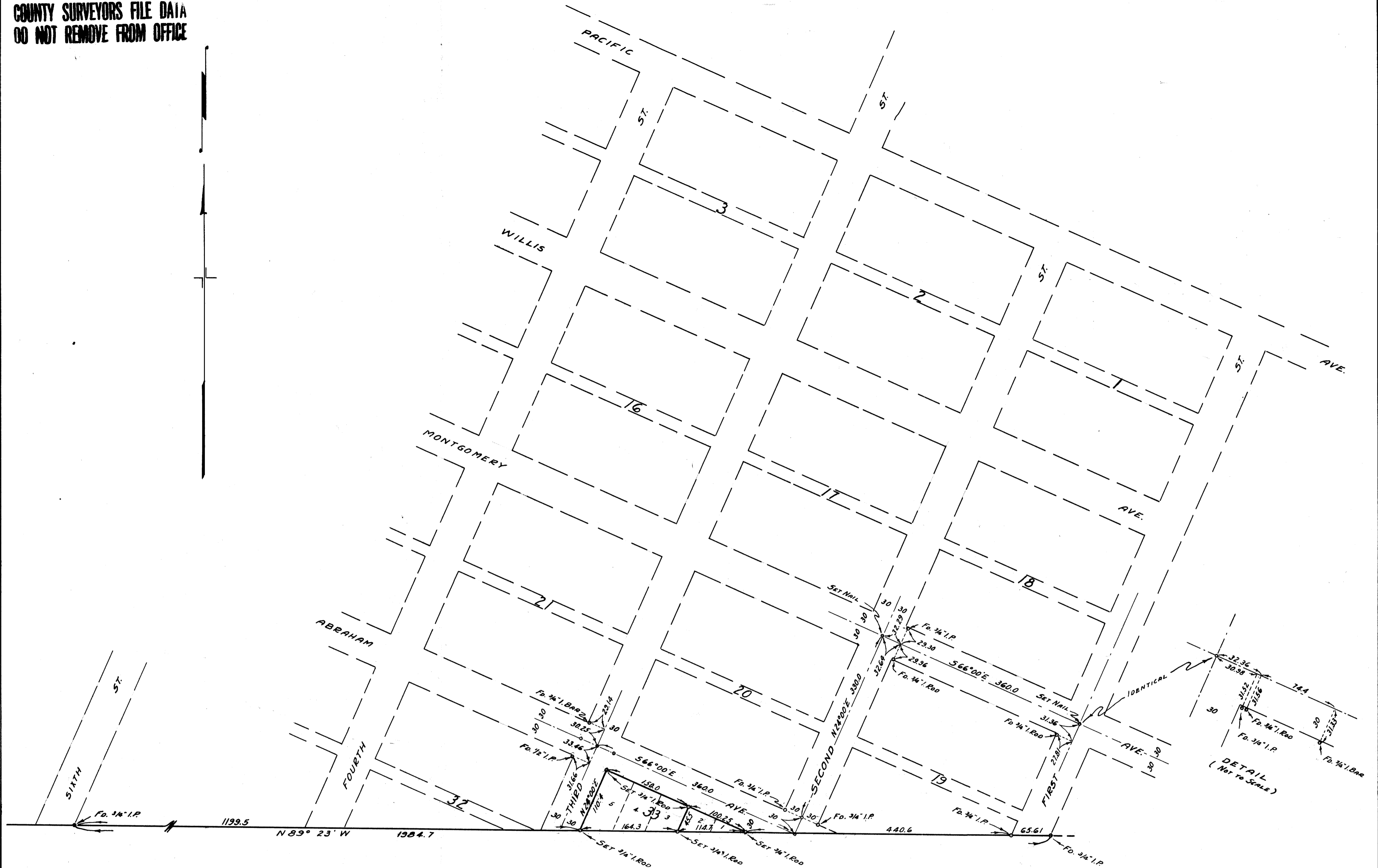


11-22-40  
COUNTY SURVEYORS FILE DATA  
DO NOT REMOVE FROM OFFICE



COUNTY SURVEYORS OFFICE  
DOUGLAS COUNTY, OREGON

BLOCK 33. GLENDALE, OREGON

BEN. B. IRVING COUNTY SURVEYOR  
SURVEYED AUGUST, 1950 BY  
ARTHUR R. EVANS DEPUTY

SCALE 1" = 100'



COUNTY SURVEYORS FILE DATA  
DO NOT REMOVE FROM OFFICE

C.S. File 44/74

Map File M 22-40