

COUNTY SURVEYORS FILE DATA
DO NOT REMOVE FROM OFFICE

SURVEY FOR DEED DESCRIPTION R.P. BORDEN PROPERTY IN SECTION 3, TWP. 28 S, RG. 6 W. W.M..

ENGINEER - W.S. BARNES

DATE - DEC. 1962

SCALE - 1" = 100'

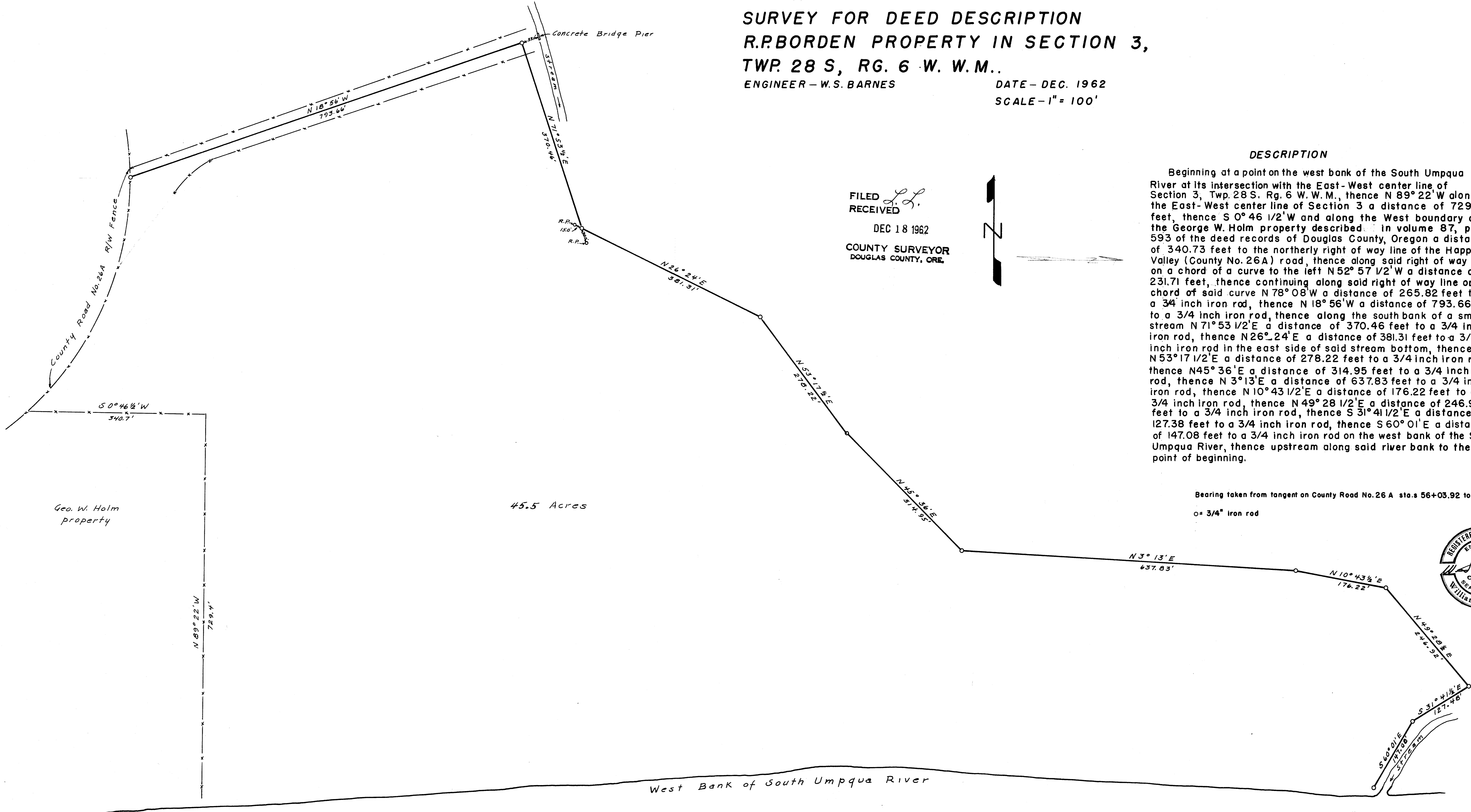
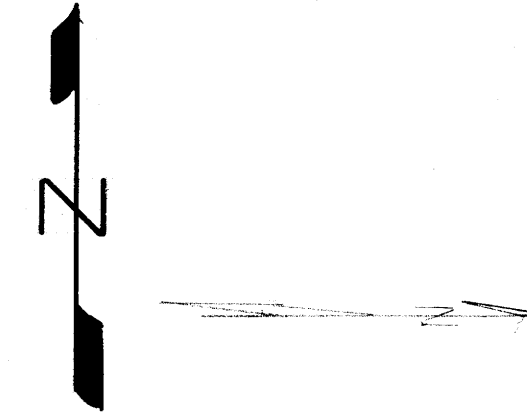
DESCRIPTION

Beginning at a point on the west bank of the South Umpqua River at its intersection with the East-West center line of Section 3, Twp. 28 S. Rg. 6 W. W.M., thence N 89° 22' W along the East-West center line of Section 3 a distance of 729.40 feet, thence S 0° 46 1/2' W and along the West boundary of the George W. Holm property described in volume 87, page 593 of the deed records of Douglas County, Oregon a distance of 340.73 feet to the northerly right of way line of the Happy Valley (County No. 26A) road, thence along said right of way line on a chord of a curve to the left N 52° 57 1/2' W a distance of 231.71 feet, thence continuing along said right of way line on a chord of said curve N 78° 08' W a distance of 265.82 feet to a 3/4 inch iron rod, thence N 18° 56' W a distance of 793.66 feet to a 3/4 inch iron rod, thence along the south bank of a small stream N 71° 53 1/2' E a distance of 370.46 feet to a 3/4 inch iron rod, thence N 26° 24' E a distance of 381.31 feet to a 3/4 inch iron rod in the east side of said stream bottom, thence N 53° 17 1/2' E a distance of 278.22 feet to a 3/4 inch iron rod, thence N 45° 36' E a distance of 314.95 feet to a 3/4 inch iron rod, thence N 3° 13' E a distance of 637.83 feet to a 3/4 inch iron rod, thence N 10° 43 1/2' E a distance of 176.22 feet to a 3/4 inch iron rod, thence N 49° 28 1/2' E a distance of 246.92 feet to a 3/4 inch iron rod, thence S 31° 41 1/2' E a distance of 127.38 feet to a 3/4 inch iron rod, thence S 60° 01' E a distance of 147.08 feet to a 3/4 inch iron rod on the west bank of the South Umpqua River, thence upstream along said river bank to the point of beginning.

FILED
RECEIVED

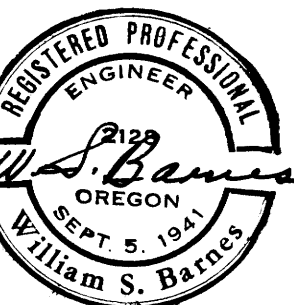
DEC 18 1962

COUNTY SURVEYOR
DOUGLAS COUNTY, ORE.



Bearing taken from tangent on County Road No. 26 A sta.s 56+03.92 to 68+03.92.

o = 3/4" iron rod



Geo. W. Holm
property

45.5 Acres

West Bank of South Umpqua River

COUNTY SURVEYORS FILE DATA
DO NOT REMOVE FROM OFFICE