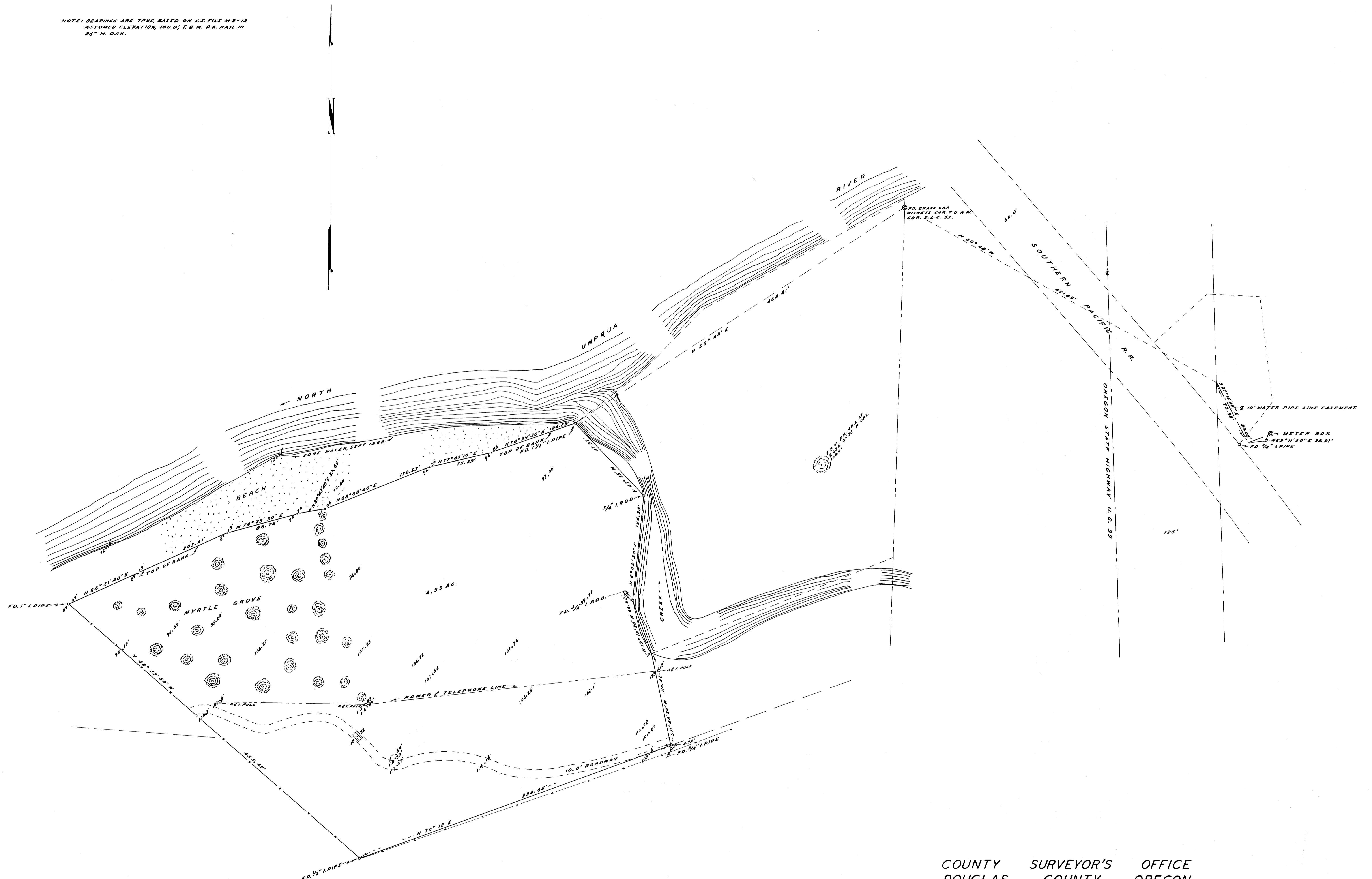


NOTE: BEARINGS ARE TRUE, BASED ON C.S. FILE M 8-12
ASSUMED ELEVATION, 100.0'; T. B.M. P.K. NAIL IN
26" W. OAK.



COUNTY SURVEYOR'S OFFICE
DOUGLAS COUNTY, OREGON

TOPOGRAPHY SURVEY IN
SECTION 25, T26S., R6 W., W.M.

FRED M. DARBY COUNTY SURVEYOR
SURVEYED SEPT 6, 1962 BY
JAMES W. BYRON - DEPUTY SCALE 1" = 50'
SURVEYED FOR COUNTY PARK DEPT.

REGISTERED
OREGON
LAND SURVEYOR

James W. Byron

JAMES W. BYRON
303