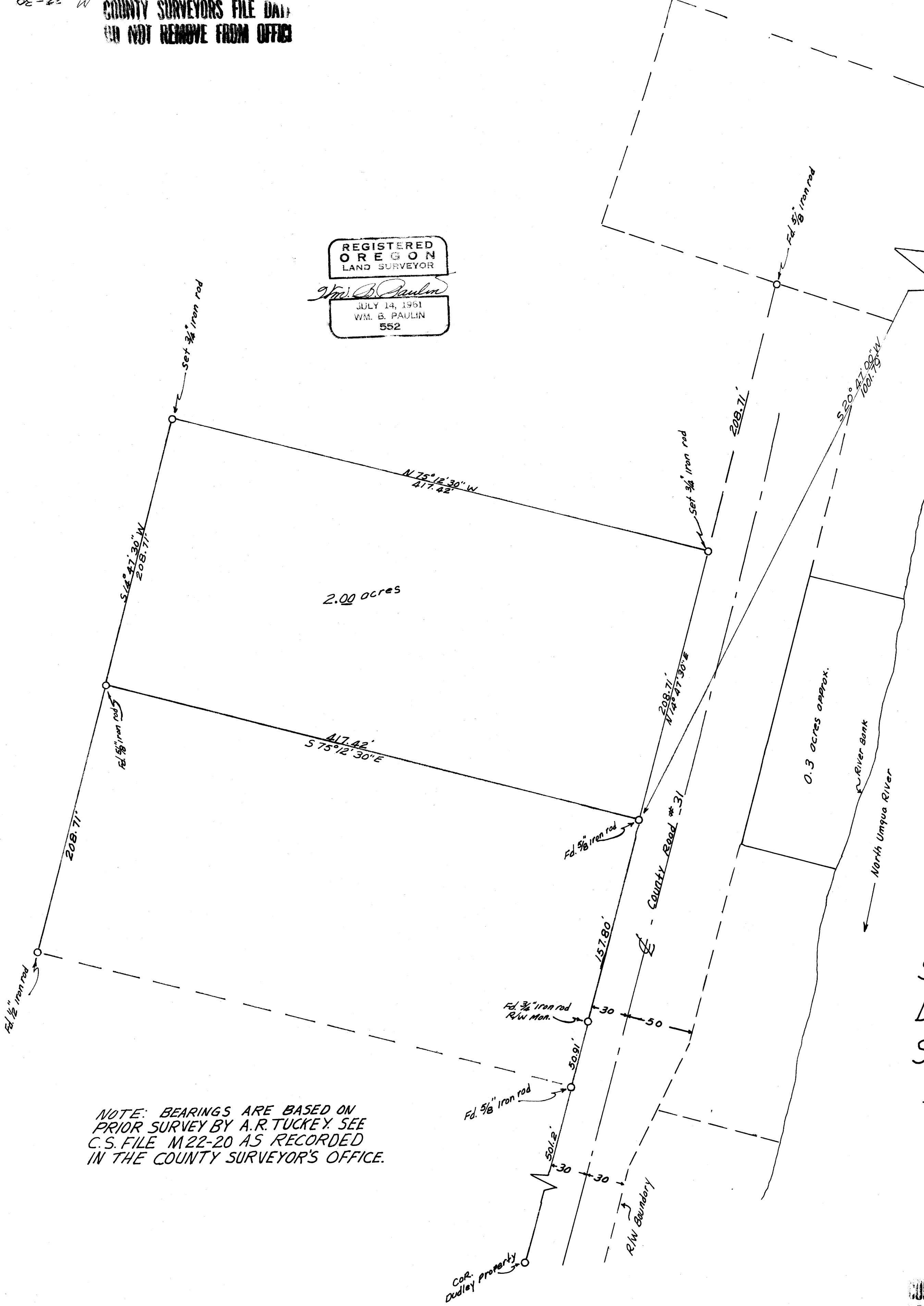


REGISTERED
OREGON
LAND SURVEYOR
Wm. B. Paulin
JULY 14, 1961
WM. B. PAULIN
552



N.E. COR.
D.L.C. #43



SCALE: 1" = 50 FEET

NOTE: BEARINGS ARE BASED ON
PRIOR SURVEY BY A.R. TUCKEY. SEE
C.S. FILE M22-20 AS RECORDED
IN THE COUNTY SURVEYOR'S OFFICE.

SURVEY FOR DEED
DESCRIPTION IN D.L.C. NO. 34
SEC. 22, T26S, R6W, W.M.

SURVEYED FOR LYLE M. MILLER
BY WM. B. PAULIN - SURVEYOR
SEPTEMBER, 1962

FILED
RECEIVED
SEP 19 1962

COUNTY SURVEYORS FILE DATA
DO NOT REMOVE FROM OFFICE

COUNTY SURVEYOR
DOUGLAS COUNTY, ORE.