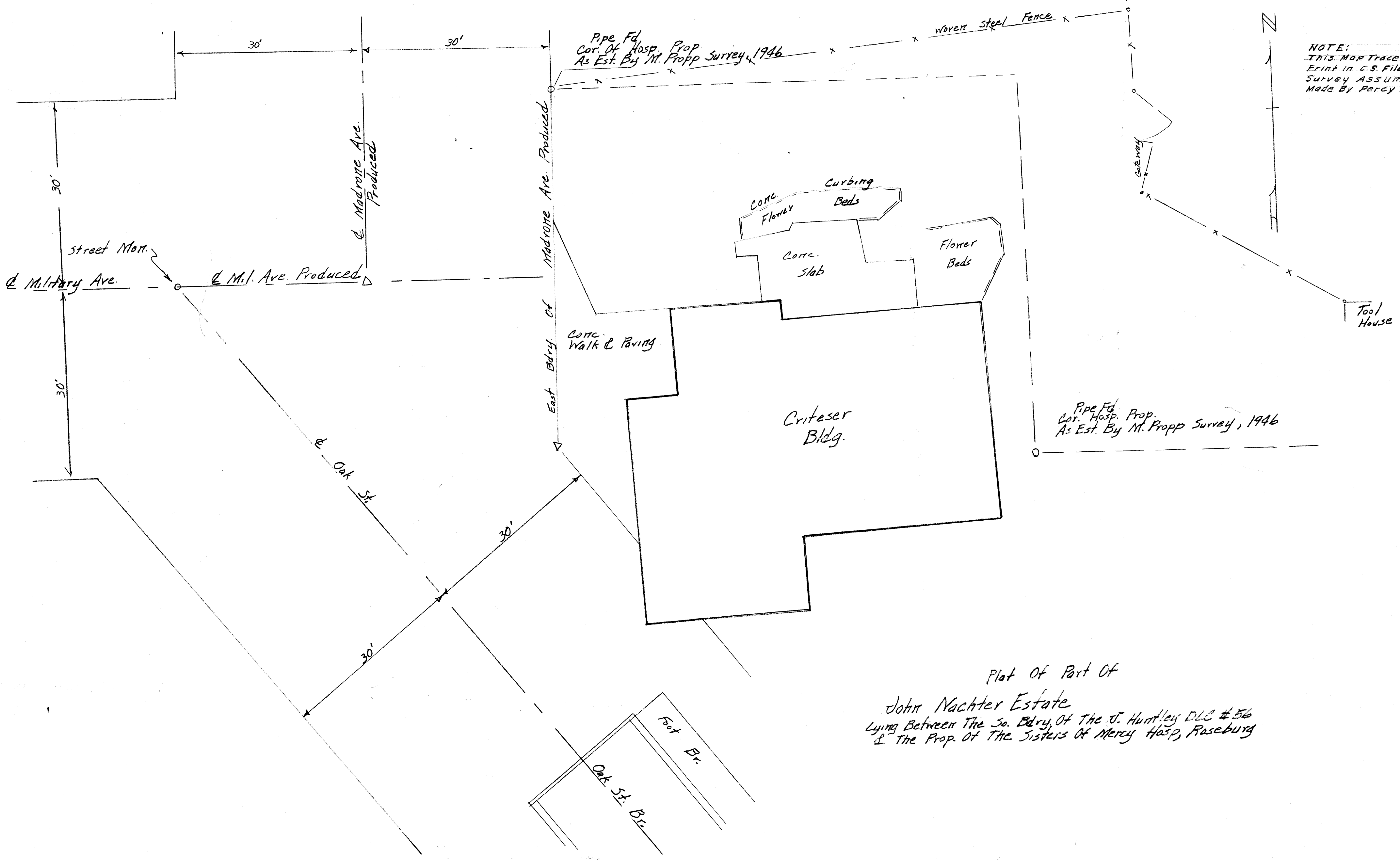


COUNTY SURVEYORS FILE DATA
DO NOT REMOVE FROM OFFICE



NOTE:
This Map Traced 5/18/64 From A
Print in C.S. File 44/46, of A
Survey Assumed To Have Been
Made By Percy Armstrong.

Pipe Fd. Prop.
Cor. Hosp. Prop.
As Est. By M. Propp Survey, 1946

Plat of Part of
John Nachter Estate
Lying Between The So. Bdry. of The J. Huntley D.L.C. # 56
& The Prop. of The Sisters of Mercy Hosp, Roseburg

COUNTY SURVEYORS FILE DATA
DO NOT REMOVE FROM OFFICE