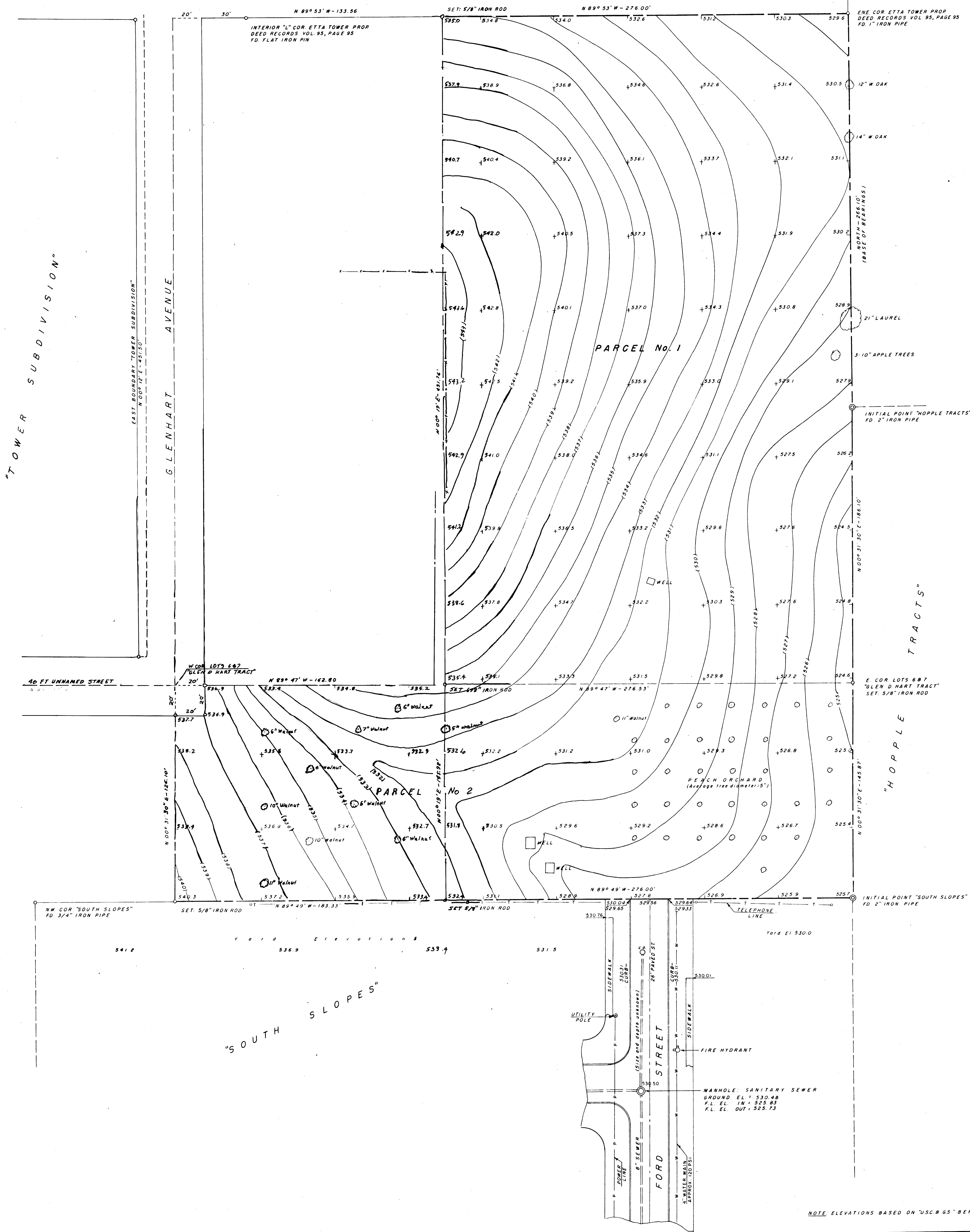


M22-21

THIS COPY MADE FROM:
A XEROX COPY
DATE July 21, 89

COUNTY SURVEYORS FILE DATA
DO NOT REMOVE FROM OFFICE



NOTE: ELEVATIONS BASED ON "USC & GS" BENCHMARK No. E-76 ELEVATION: 534.563

1. COMBINED PROPERTY LINE, TOPOGRAPHIC & UTILITY MAP
- 2.
3. HOUSING AUTHORITY OF DOUGLAS COUNTY, OREGON
4. WINSTON, DOUGLAS COUNTY, OREGON
5. SURVEYED BY: G. ROBERT LECKLIDER - REG. PROF. ENG'R
6. SCALE: 1" = 30'
7. FEBRUARY, 1962
8. PROJECT No. ORE-3-6
PLAN No.

FILED
RECEIVED
FEB 23 1962
COUNTY SURVEYOR
DOUGLAS COUNTY, ORE.

M22-21

COUNTY SURVEYORS FILE DATA
DO NOT REMOVE FROM OFFICE