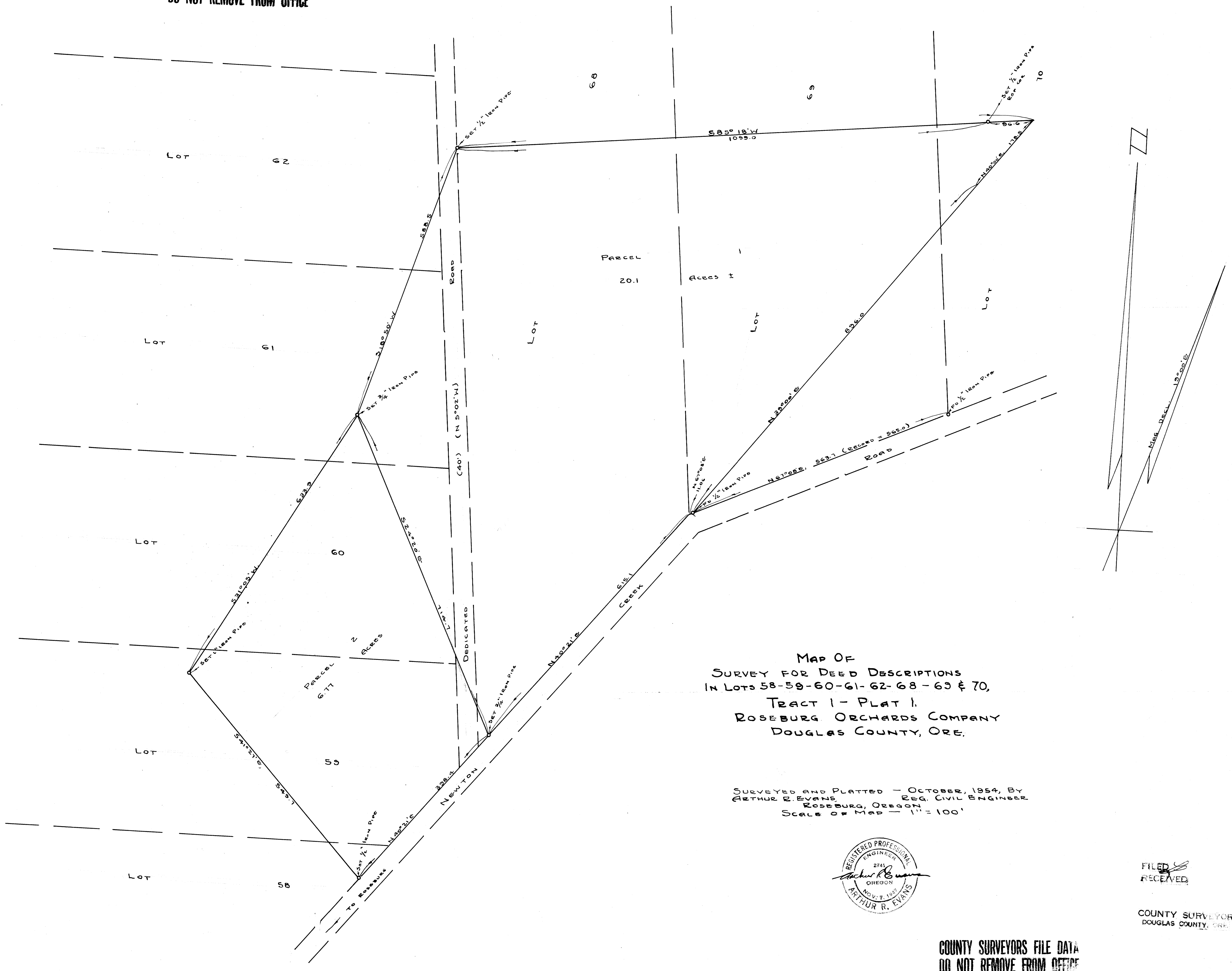


COUNTY SURVEYORS FILE DATA
DO NOT REMOVE FROM OFFICE



MAP OF
 SURVEY FOR DEED DESCRIPTIONS
 IN LOTS 58-59-60-61-62-68-69 & 70,
 TRACT 1 - PLAT 1,
 ROSEBURG ORCHARDS COMPANY
 DOUGLAS COUNTY, ORE.

SURVEYED AND PLATTED - OCTOBER, 1954, BY
 ARTHUR R. EVANS, REG. CIVIL ENGINEER
 ROSEBURG, OREGON
 SCALE OF MAP - 1" = 100'



FILED
 RECEIVED

COUNTY SURVEYOR
 DOUGLAS COUNTY, ORE.

COUNTY SURVEYORS FILE DATA
 DO NOT REMOVE FROM OFFICE

FOR PORTER AND HUGHES

C. S. File No. 41/326