

COUNTY SURVEYORS FILE
DO NOT REMOVE THIS OFFICIAL

UMPQUA

SOUTH

RIVER

PACIFIC

HIGHWAY

No 99

M. HANLEY - D.L.C. No 39.

J.S. BURNETT - D.L.C. No 42.

33.34 Ac.

43.97 Ac.

11.32 Ac.

30.67

37.88

11 12
14 13

30.22

MAP
OF
PORTION OF HELGESON RANCH
IN
SECTIONS-11-12-13-14.
TOWNSHIP-29S-RANGE-6 W.WM.
Scale-1"=200' Jan. 1946.



FILED
RECEIVED

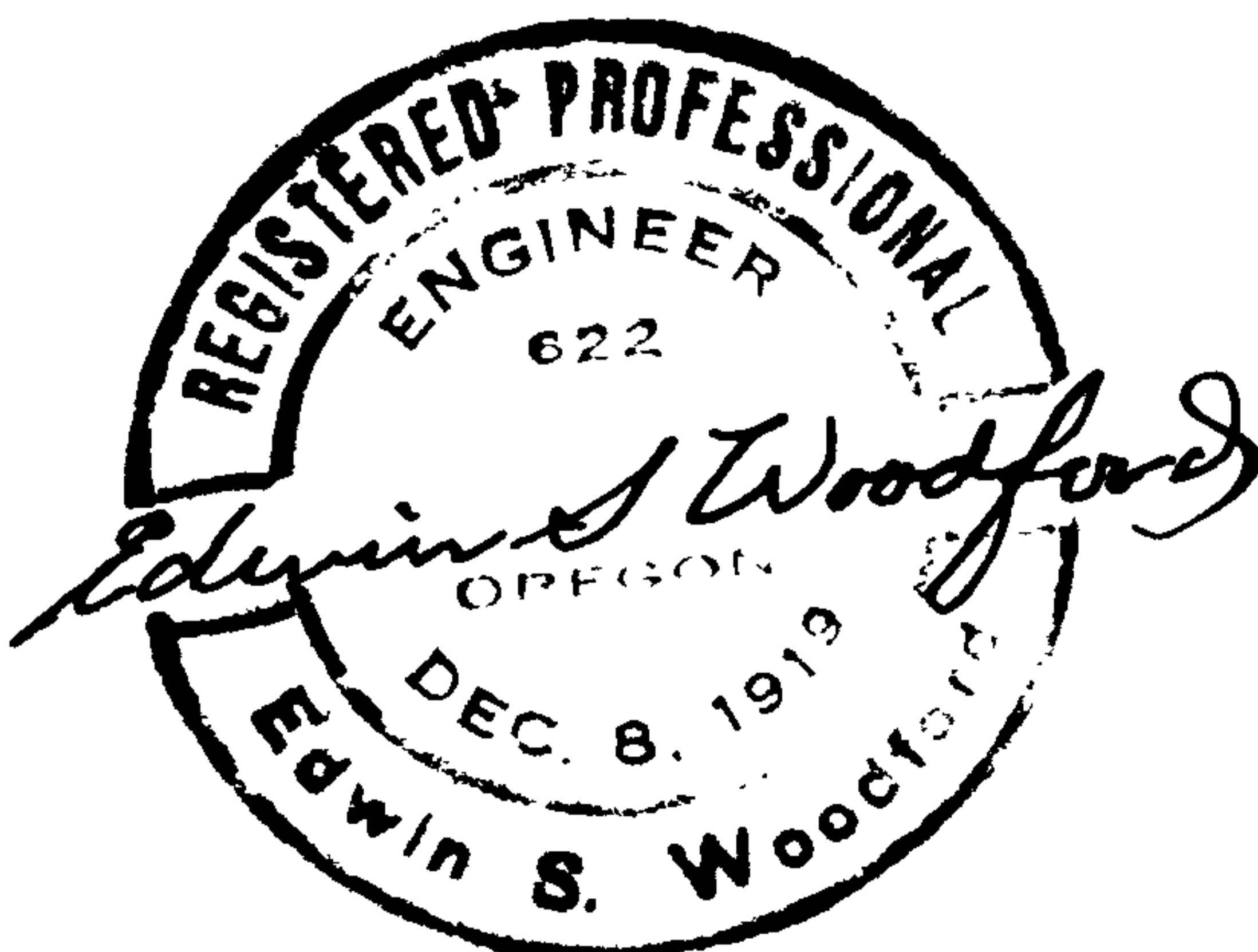
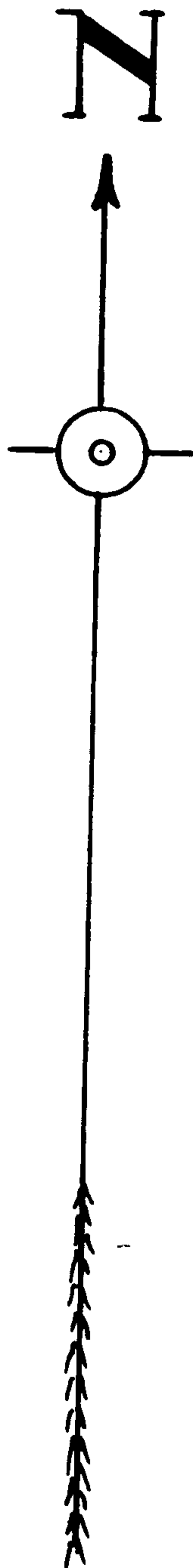
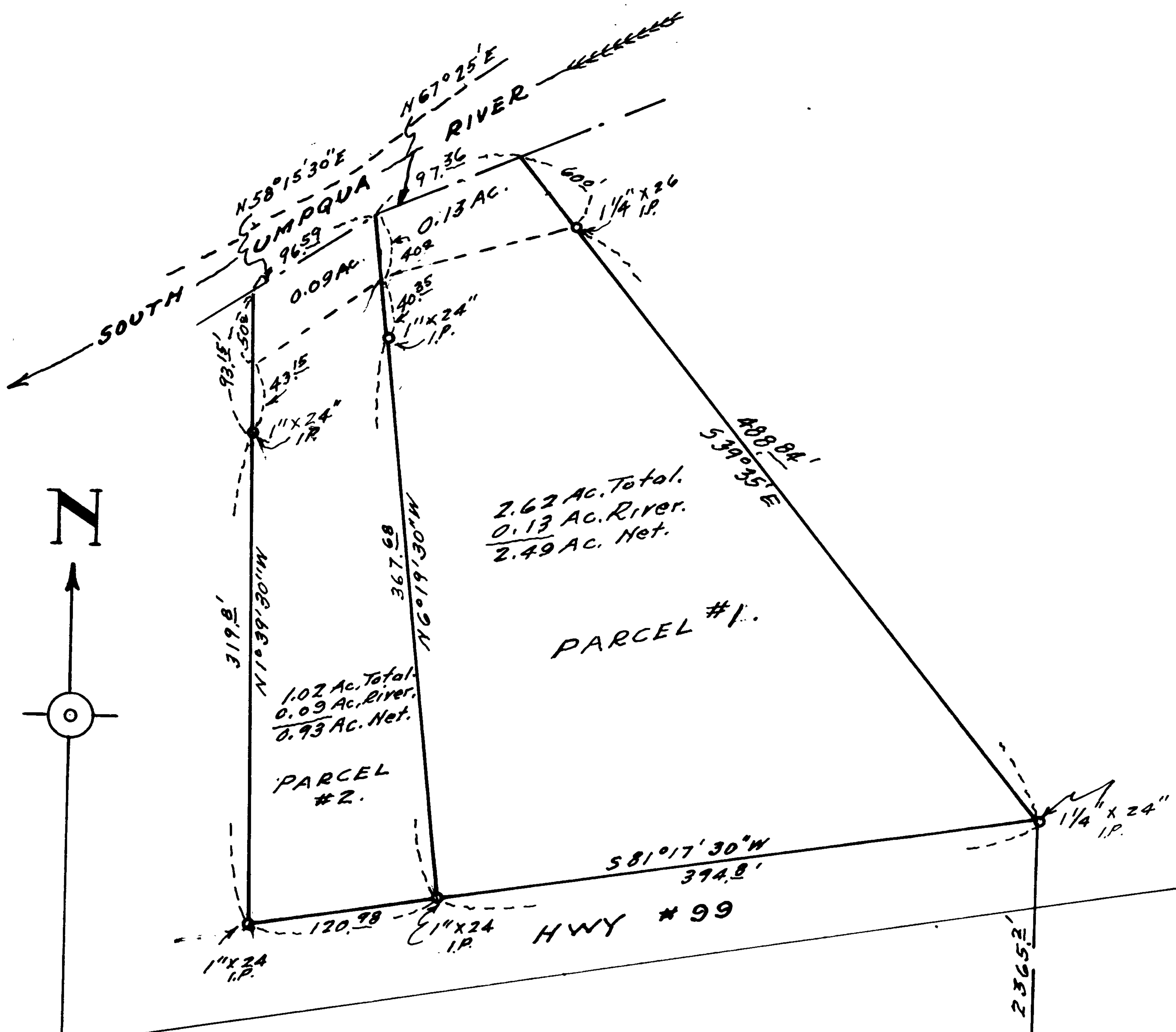
JUN 9 1961

COUNTY SURVEYOR
DOUGLAS COUNTY, ORE.

O.S. 40/462-63
M 22-17

COUNTY SURVEYORS FILE
DO NOT REMOVE THIS OFFICIAL

MAP
OF
PORTION OF HELGESEN RANCH
IN
SECTION 12 - T. 29 S - R. 6 W W. M.
SCALE - 1" = 100' AUGUST 1953.



COUNTY SURVEYORS FILE DATA
DO NOT REMOVE FROM OFFICE

SOUTH
EAST 200'
SEC. 12 T. 29 S - R. 6 W W. M.

CS FILE FOLDER

CONTAINS

MORE

INFORMATION

SOUTH-UMPQUA-RIVER

N85°51'W
200.3'

0.82 Ac.

2.36 Ac. Total
0.82 " River
1.54 " Net.

2.19 Ac

877.65

326.85'
570.47'W

N70°47'E
395.25'

200.0'
S79°42'E

N70°47'E
475.89'

199.95'
N80°16'W
HWY # 99

672.8
S70°47'W
1746.8

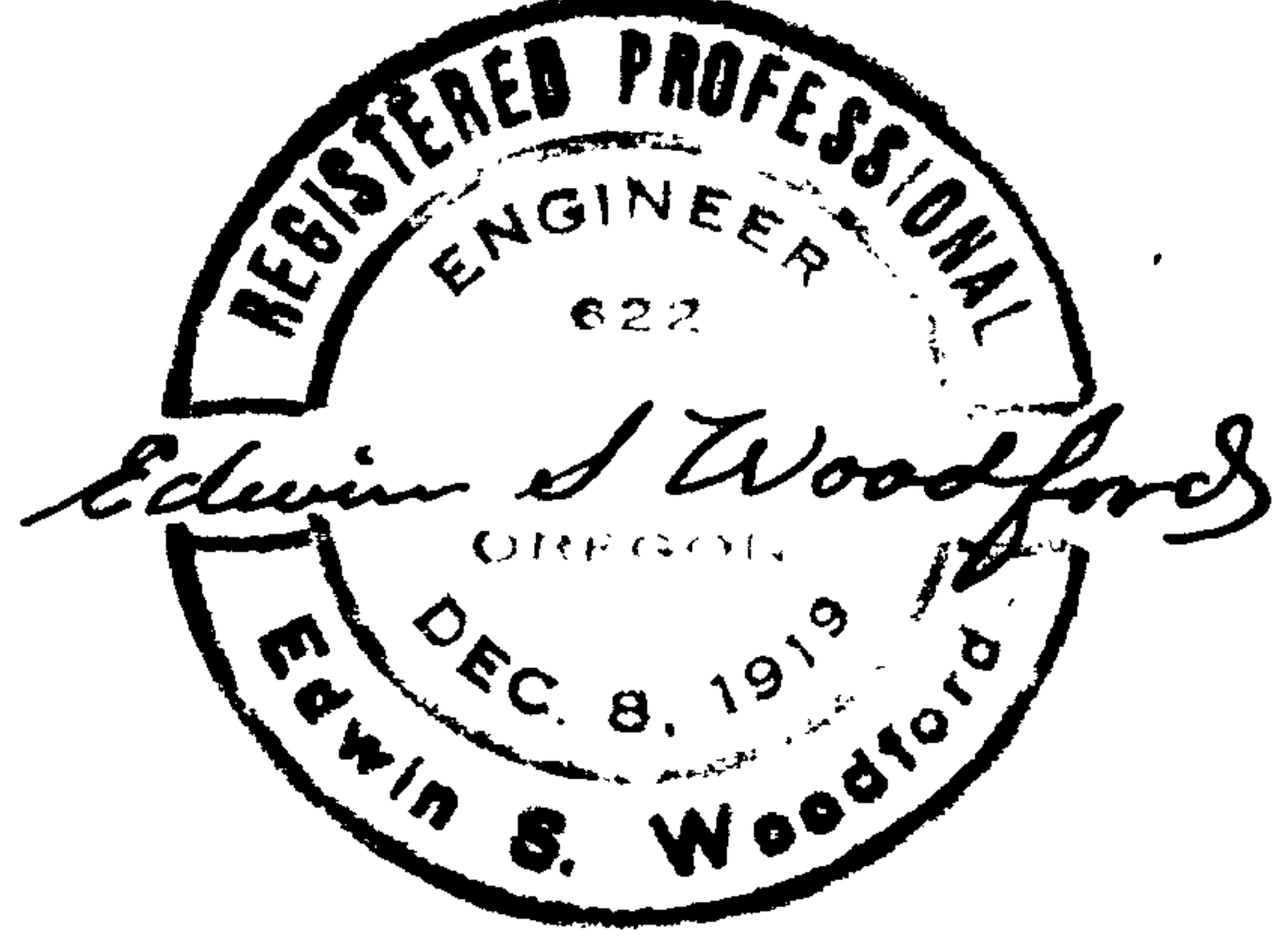
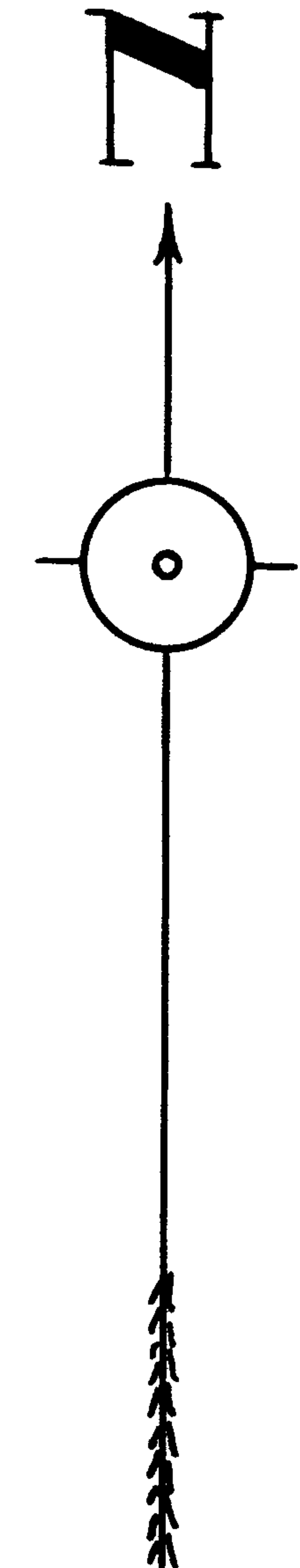
11 12
14 13

TP. 29S-R96W
WM.

SCALE - 1" = 100'

AUGUST 1953.

C. S. File No. ~~40/462-2~~
40/462-2
P



COUNTY SURVEYORS FILE DATA
DO NOT REMOVE FROM OFFICE

MAP
OF
PORTION OF HELGESEN RANCH
IN

SECTION 12-TP. 29S-R9.6W WM.

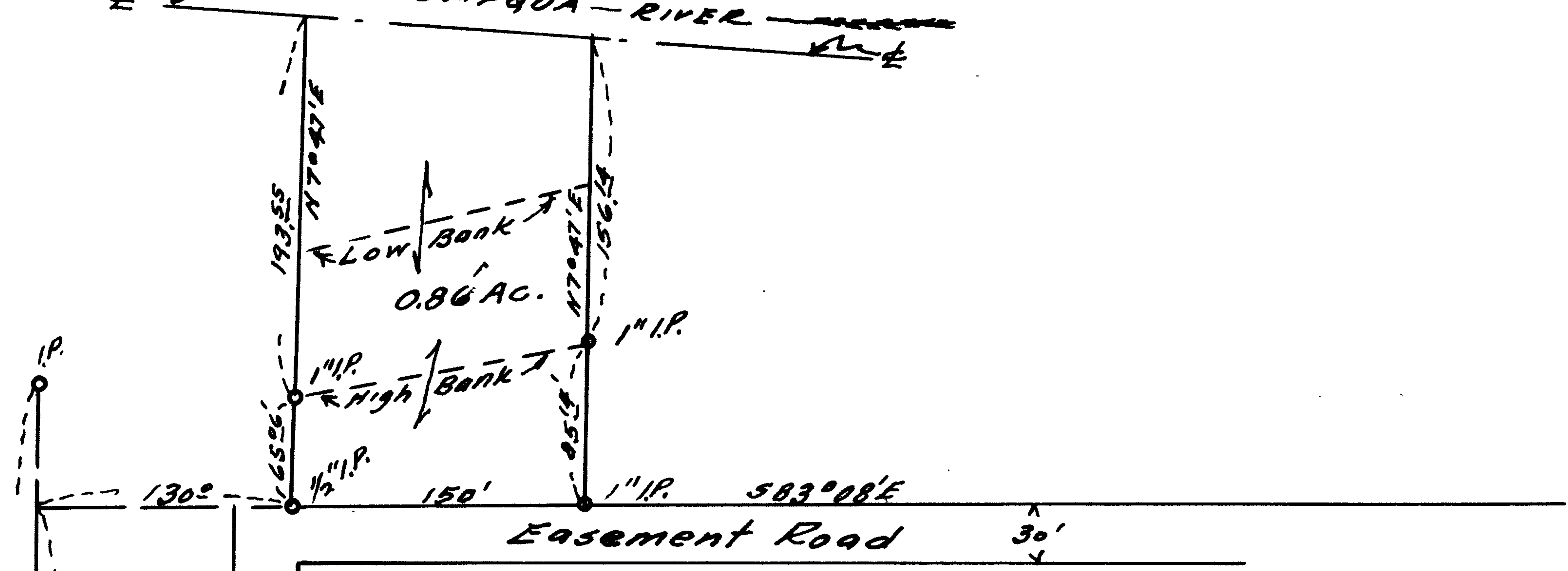
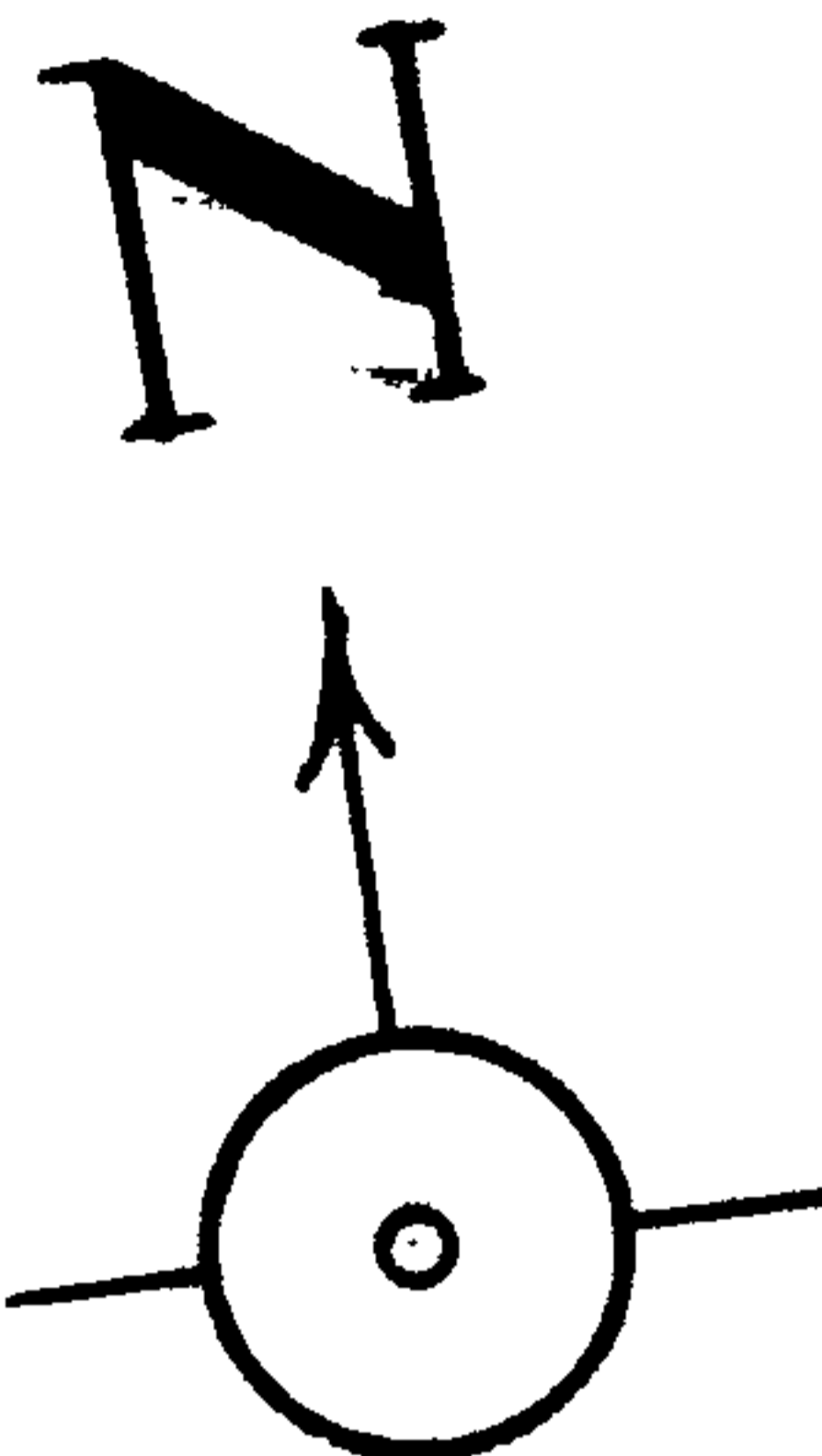
CS FILE FOLDER

CONTAINS

MORE

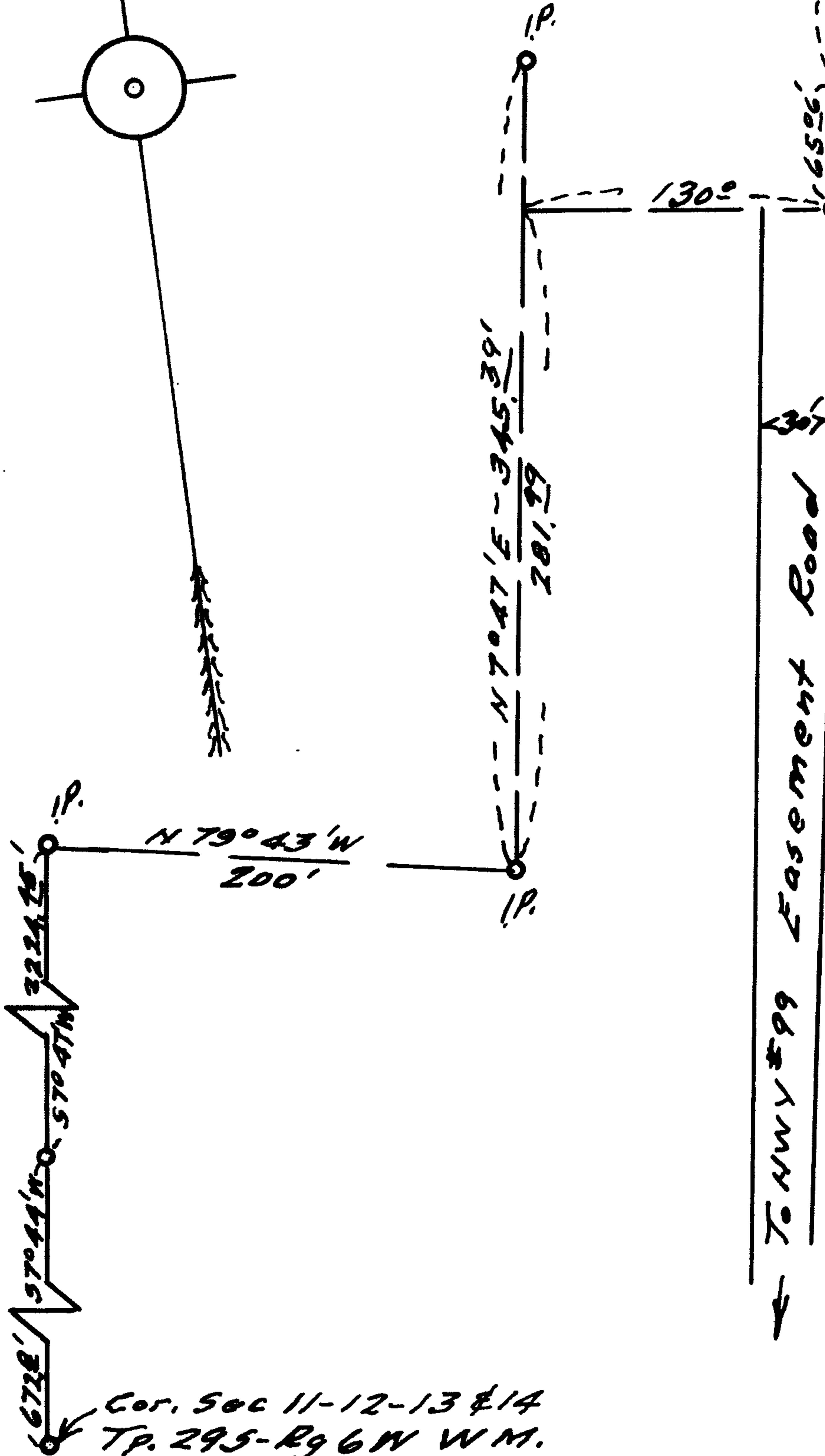
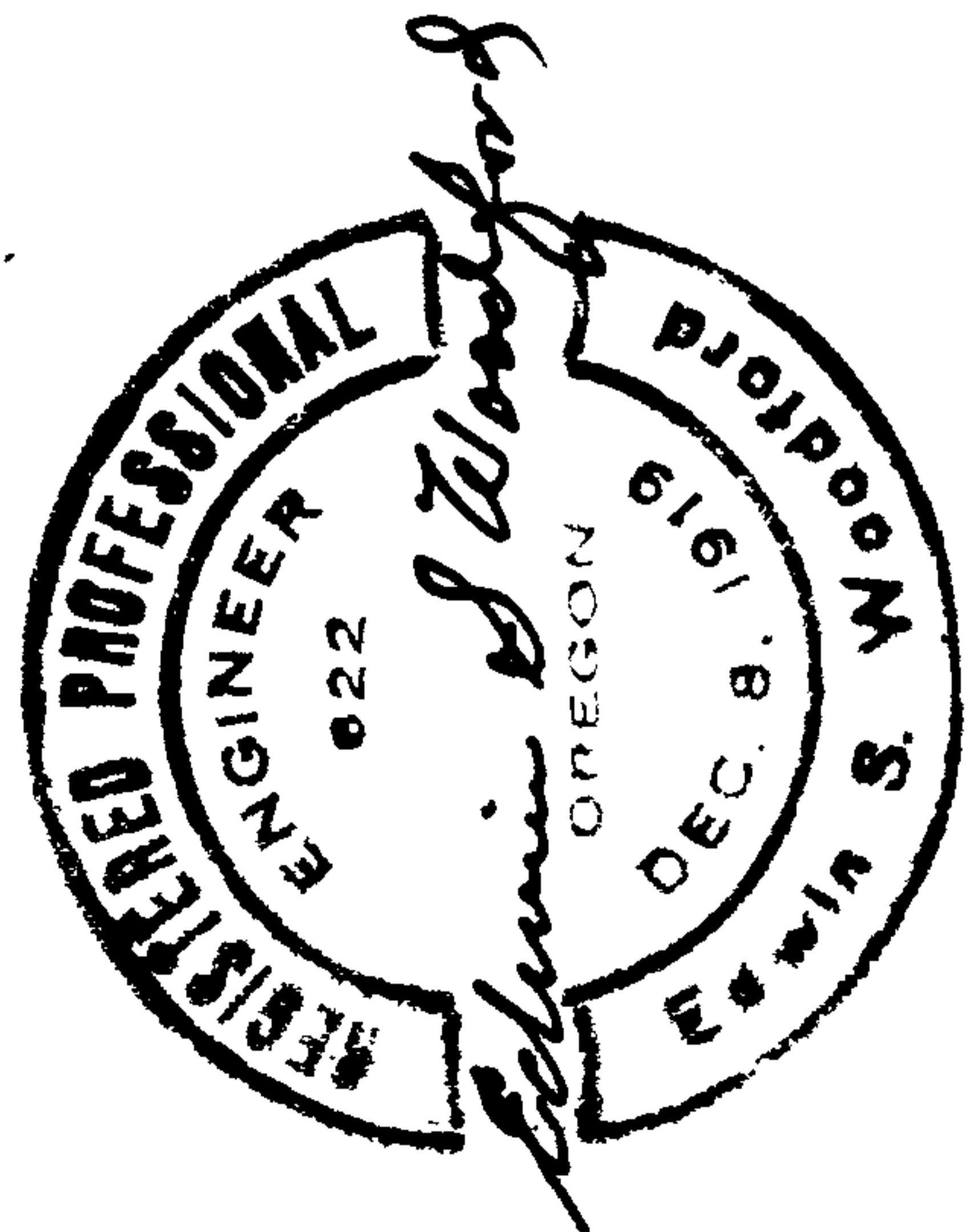
INFORMATION

SOUTH-UMPQUA-RIVER



MAP
OF
PORTION OF HELGESEN RANCH
IN
SECTION 12-TR. 29 S-RG. 6 W WM.
SCALE - 1" = 100'.
DEC. 1953.

COUNTY SURVEYORS FILE DATA
DO NOT REMOVE FROM OFFICE



Cor. Sec 11-12-13 & 14
Tp. 29 S-Rg 6 W WM.

CS FILE FOLDER

CONTAINS

MORE

INFORMATION