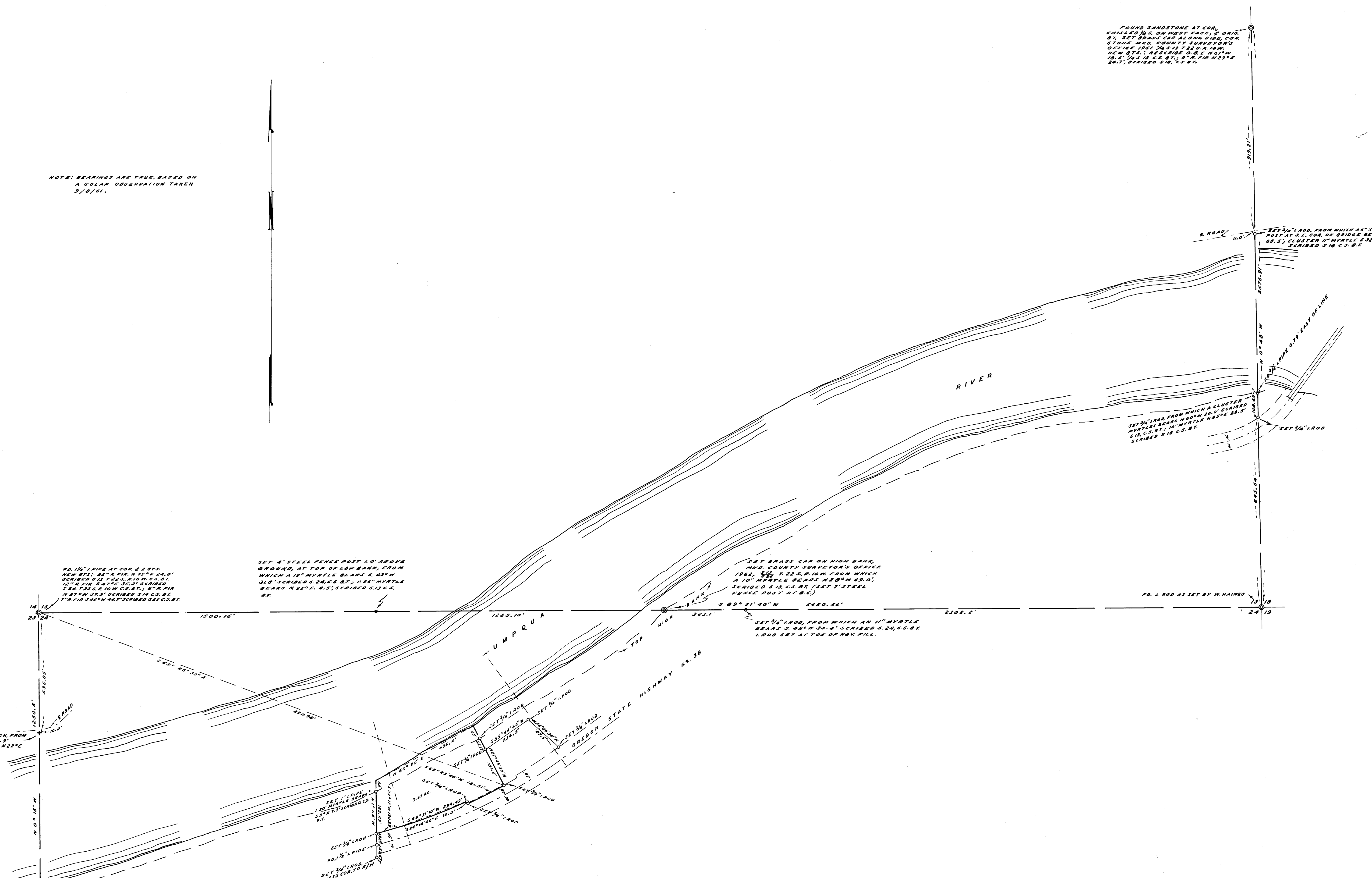


NOTE: BEARINGS ARE TRUE, BASED ON  
 A SOLAR OBSERVATION TAKEN  
 3/8/61.

FOUND SANDSTONE AT COR.  
 CHILLED 3/4" ON WEST FACE; 8" BRASS  
 SET BRASS CAR ALONG SIDE, COR.  
 STONE, HND. COUNTY SURVEYOR'S  
 OFFICE 1961. 78.5' IS T. 22 S. R. 10 W.  
 NEW 8" 1" BEARING 0. 25' N 81° W  
 10.4' 74.5' IS C.S. 87; 8" R. FIR N 23° E  
 20.7', SCRIBED 5/18 C.S. 87.



COUNTY SURVEYOR'S OFFICE  
 DOUGLAS COUNTY, OREGON

SURVEY FOR DEED DESCRIPTION,  
 SECTION 24, T22S., R.10W., W.M.

*James W. Byron*

FRED M. DARBY COUNTY SURVEYOR  
 SURVEYED SEPT 6, 1961 BY  
 JAMES W. BYRON - DEPUTY SCALE 1" = 200'  
 SURVEYED FOR COUNTY PARK DEPT.