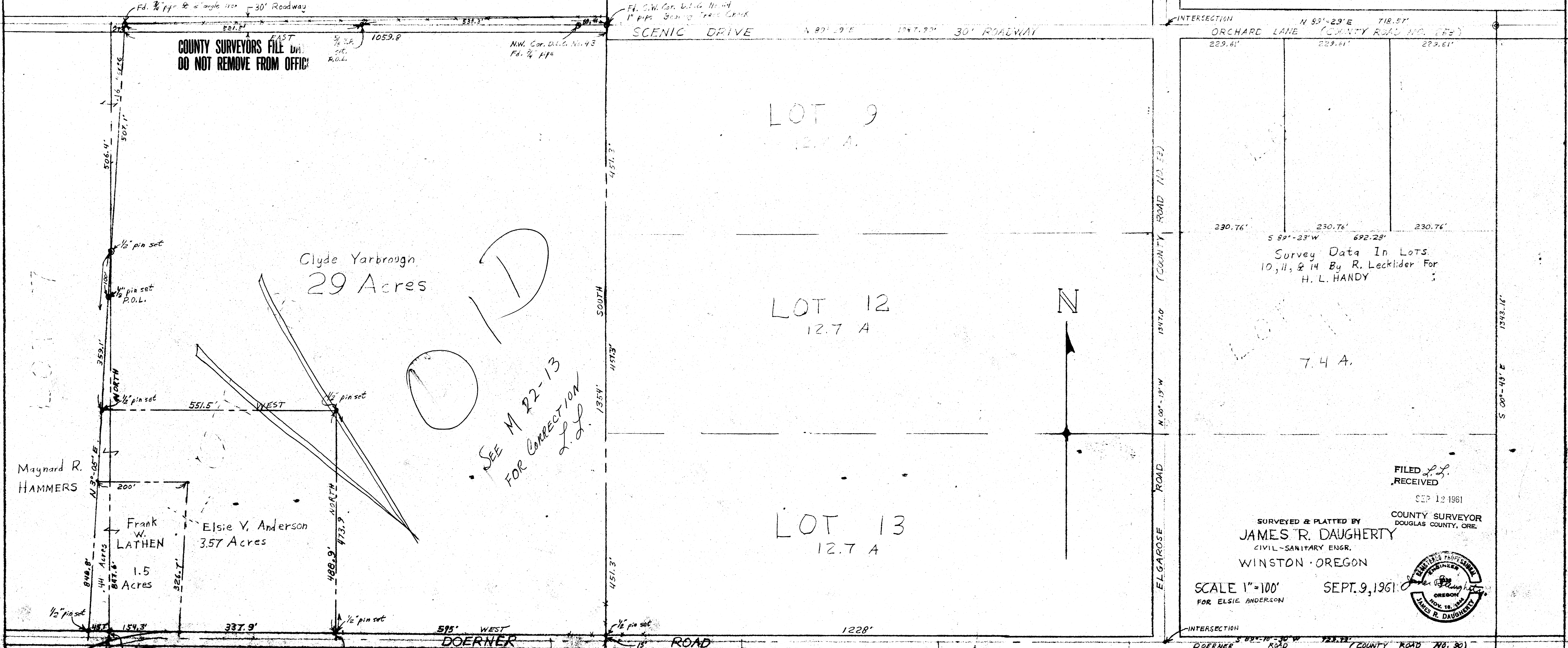


SURVEY OF LOT 8 - FIRST ADDITION TO EDEN ORCHARDS - DOUGLAS COUNTY - OREGON



COUNTY SURVEYORS FILE DA
DO NOT REMOVE FROM OFFICE

Clyde Yarbrough
29 Acres

SEE M 22-13
FOR CORRECTION
L.D.

Elsie V. Anderson
3.57 Acres

Maynard R.
HAMMERS

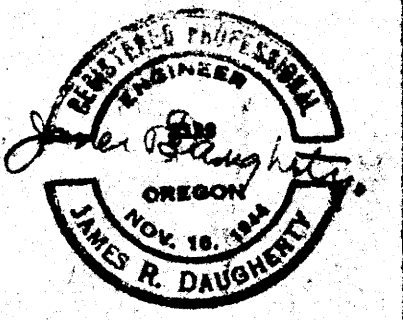
Frank
W.
LATHEN
1.5
Acres

FILED L.L.
RECEIVED
SEP 12 1961
COUNTY SURVEYOR
DOUGLAS COUNTY, ORE.

SURVEYED & PLATTED BY
JAMES R. DAUGHERTY
CIVIL-SANITARY ENGR.
WINSTON - OREGON

SCALE 1"=100'
FOR ELSIE ANDERSON

SEPT. 9, 1961



COUNTY SURVEYORS FILE DA
DO NOT REMOVE FROM OFFICE