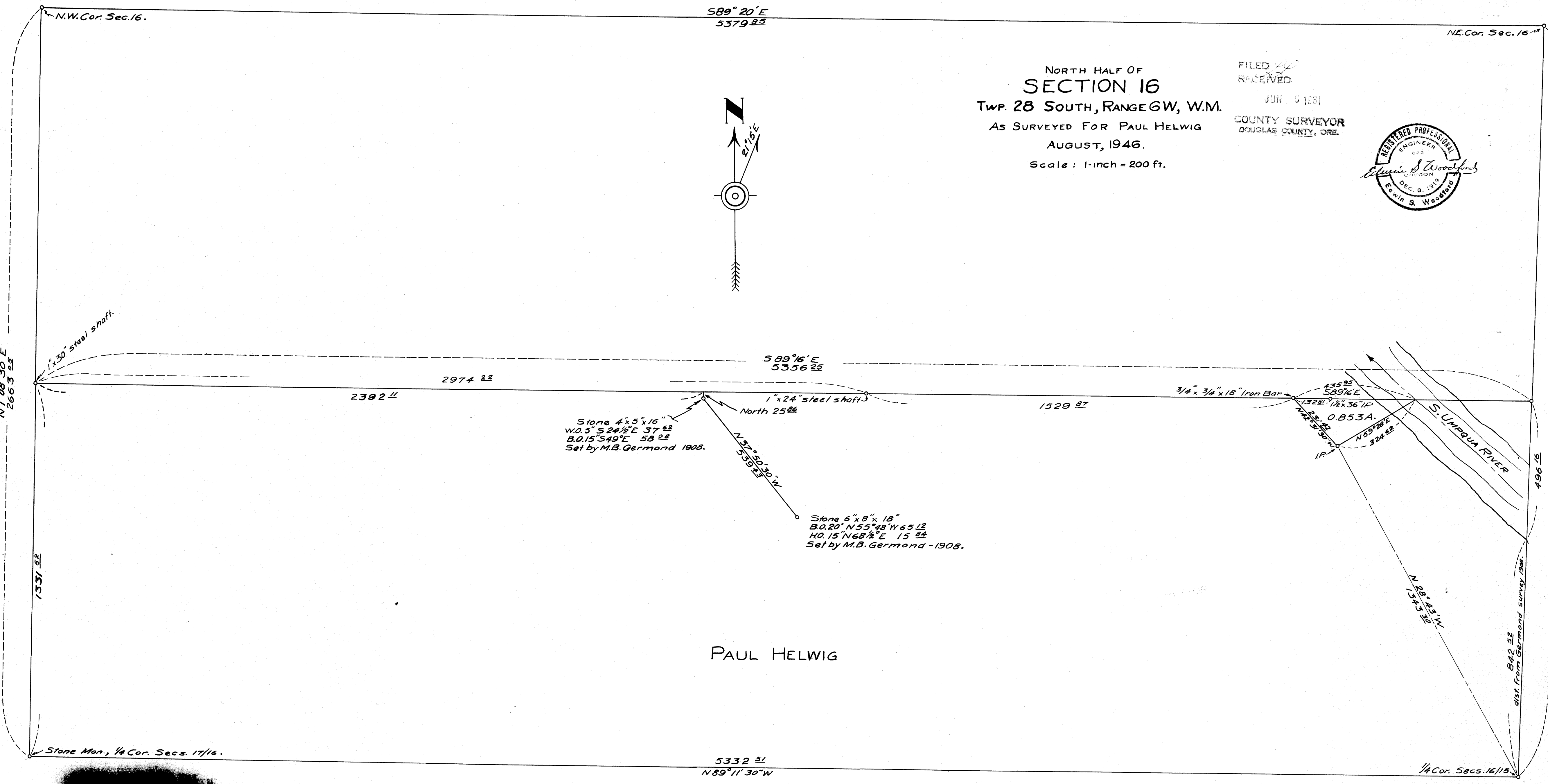
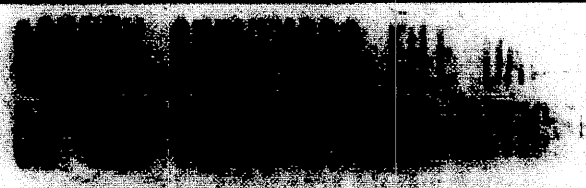


11-28 N



NORTH HALF OF  
**SECTION 16**  
 TWP. 28 SOUTH, RANGE 6W, W.M.  
 AS SURVEYED FOR PAUL HELWIG  
 AUGUST, 1946.  
 Scale: 1-inch = 200 ft.

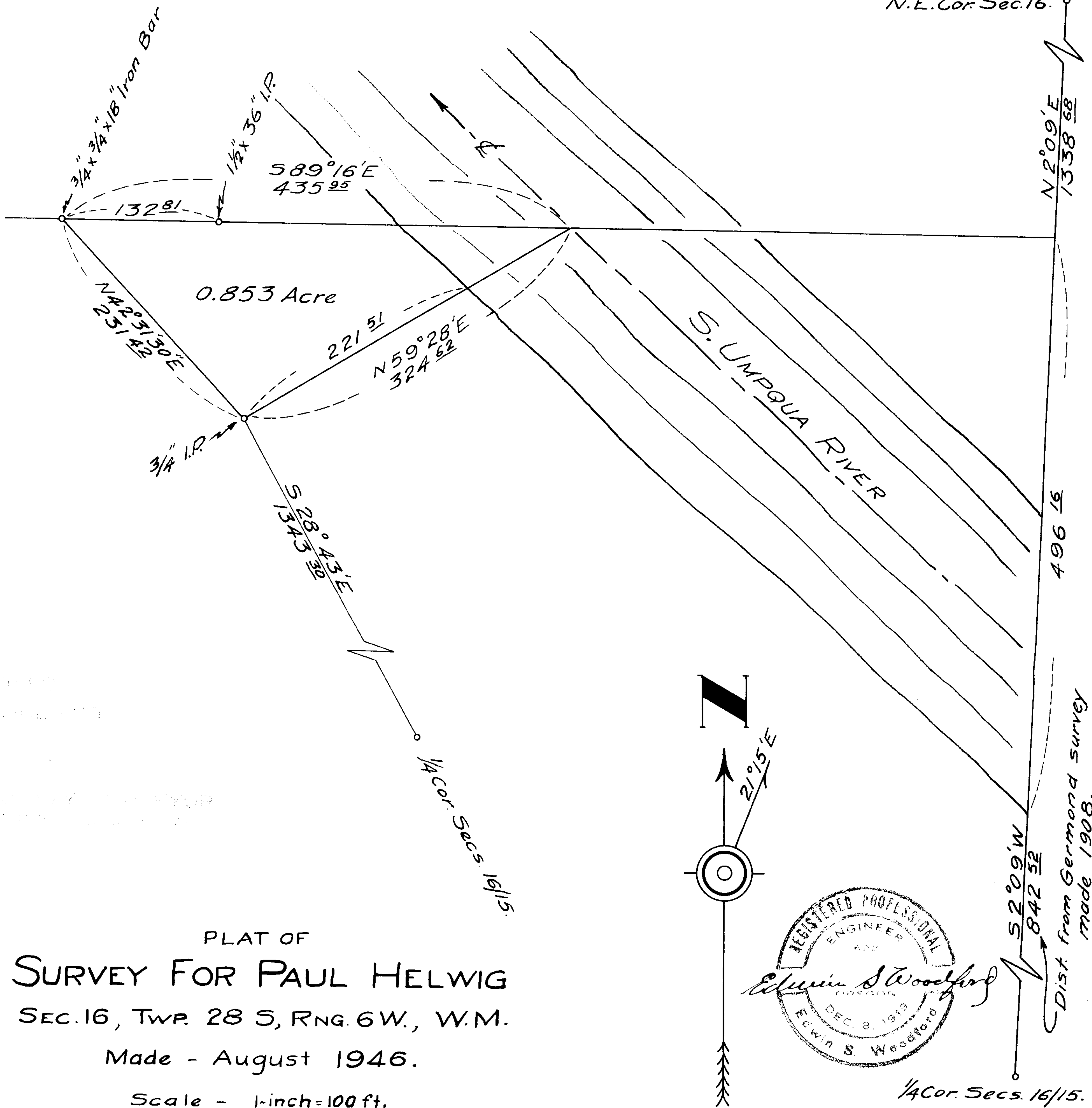
FILED *✓*  
 RECEIVED  
 JUN. 9 1946  
 COUNTY SURVEYOR  
 DOUGLAS COUNTY, ORE.



PAUL HELWIG

c.s. 21/138  
 M 28-91

N.E. Cor. Sec. 16.



PLAT OF  
**SURVEY FOR PAUL HELWIG**  
 SEC. 16, TWP. 28 S, RNG. 6 W., W.M.

Made - August 1946.

Scale - 1-inch = 100 ft.

**COUNTY SURVEYORS FILE DATA  
 DO NOT REMOVE FROM OFFICE**

CS FILE FOLDER

CONTAINS

MORE

INFORMATION