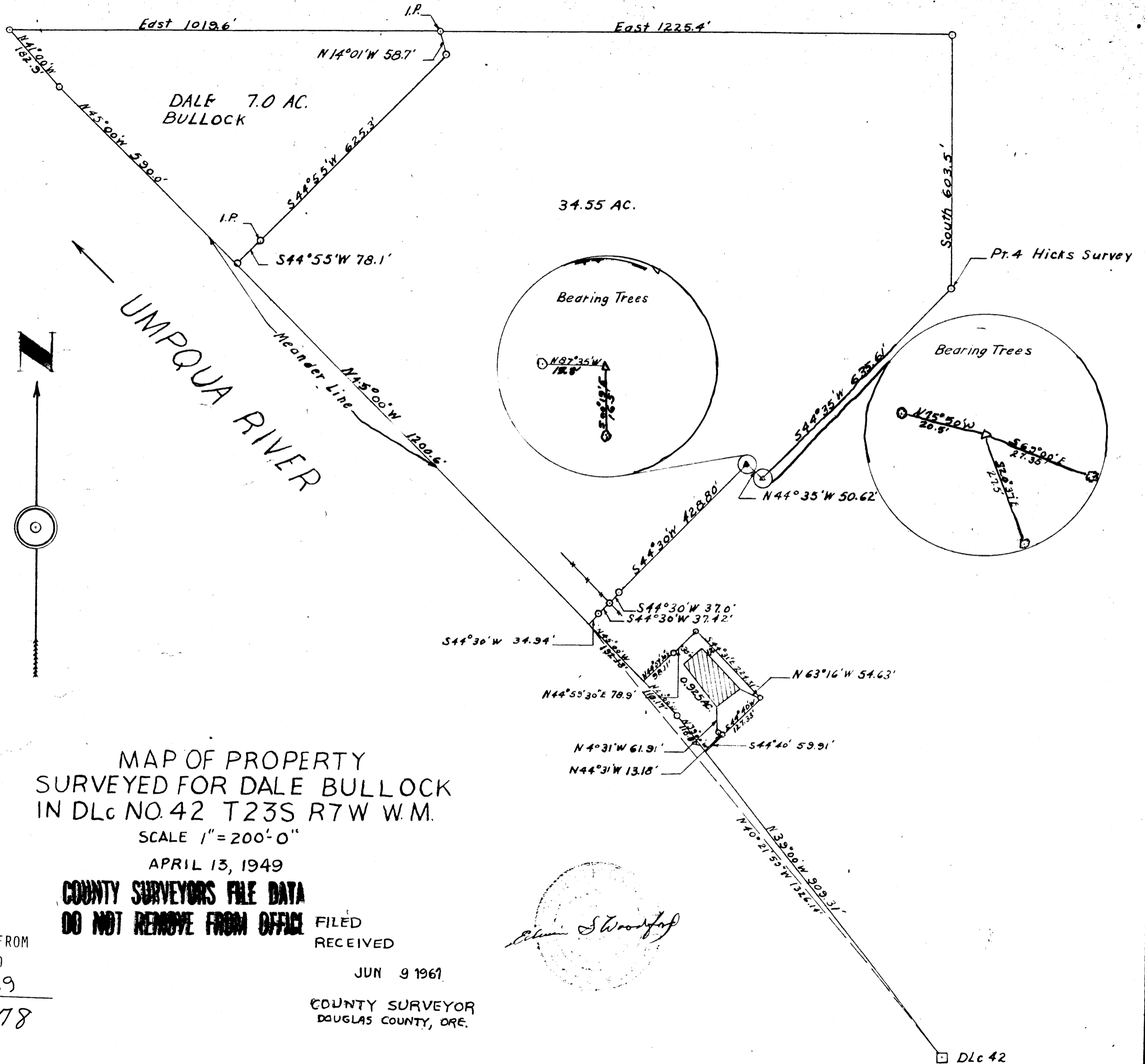


-42-

Beginning Point
Lat. 2446' N
Dep. 2245.0' E
SE Corner DLc 42



MAP OF PROPERTY
SURVEYED FOR DALE BULLOCK
IN DLc NO. 42 T23S R7W W.M.

SCALE 1" = 200'-0"

APRIL 13, 1949

**COUNTY SURVEYORS FILE DATA
DO NOT REMOVE FROM OFFICE**

FILED
RECEIVED

JUN 9 1961

COUNTY SURVEYOR
DOUGLAS COUNTY, ORE.

Clara S. Woodruff

THIS COPY MADE FROM
A XEROX 2510

DATE July 20, 89

C.S. 40/178
M 21-9

C.S. 40/178

M 21-9