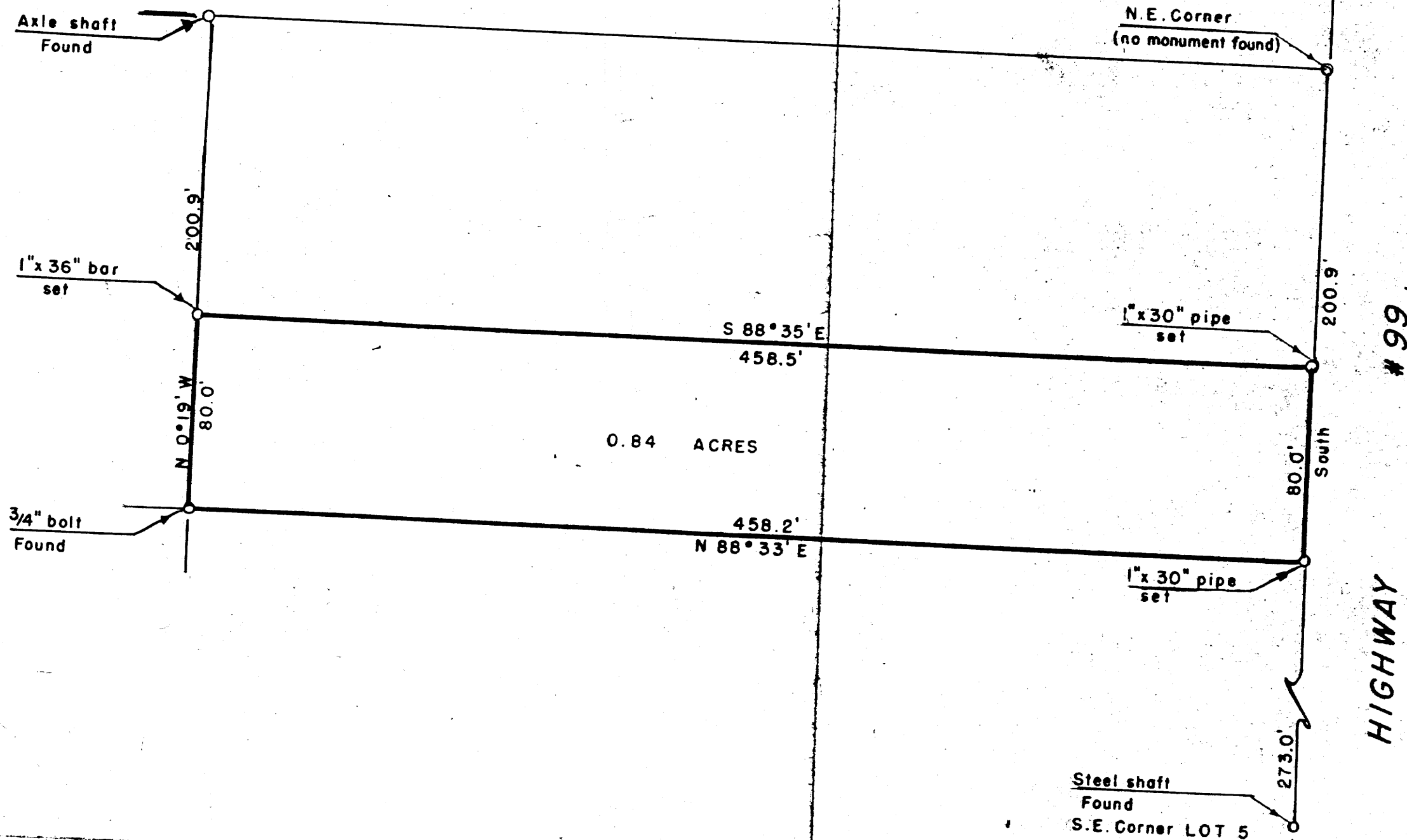


C.S. 40/309
M 21-80

THIS COPY MADE FROM
A XEROX 2510

DATE July 21, 89



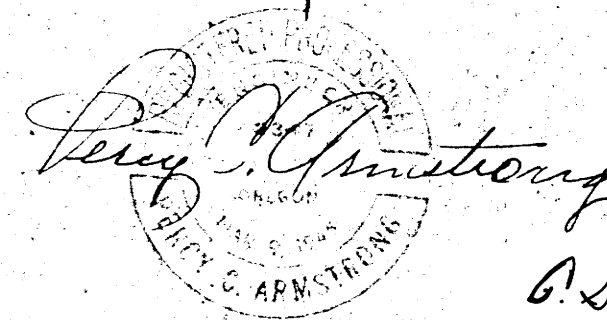
PLAT OF
RALPH J. WIRTH PROPERTY

IN LOT 5, FRUITVALE ADDITION TO ROSEBURG, OREGON.

April 1951

Scale 1" = 50'

COUNTY SURVEYORS FILE
 DO NOT REMOVE FROM FILE



C.S. 40/309

M 21-80