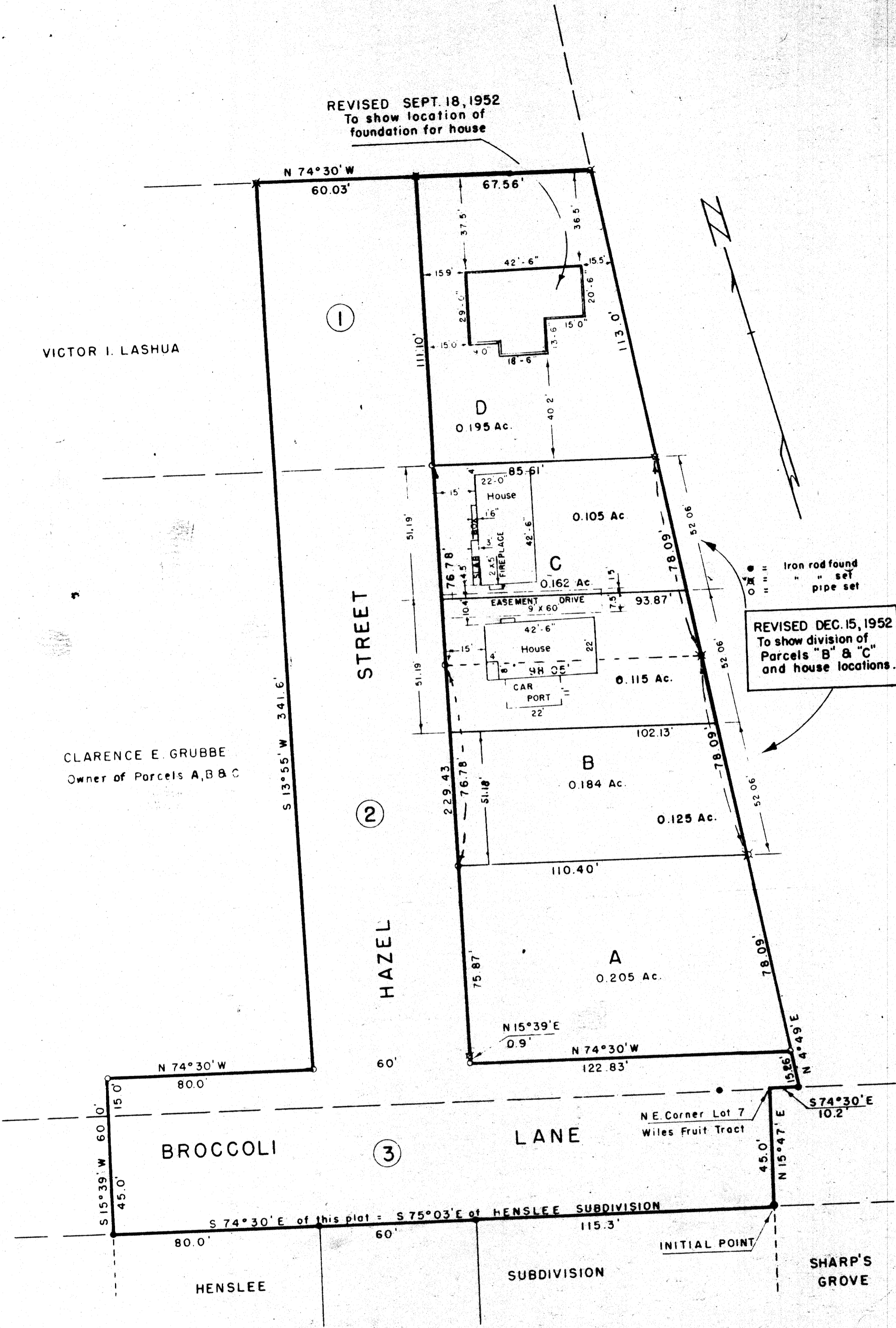


REVISED SEPT. 18, 1952  
To show location of  
foundation for house

VICTOR I. LASHUA

CLARENCE E. GRUBBE  
Owner of Parcels A, B & C

REVISED DEC. 15, 1952  
To show division of  
Parcels "B" & "C"  
and house locations.



A PLAT OF CERTAIN PARCELS  
within Lot 6, Wiles Fruit Tract,  
T 27 S - R 6 W W.M. Douglas Co. Ore  
March 1952 Scale 1" = 30

NOTE :-  
THIS MAP IS AN EXACT REFLEX COPY OF  
A PRINT SHOWING A SURVEY REPORTEDLY MADE  
BY PERCY ARMSTRONG, NOW DECEASED. SEE  
ALSO C.S. FILE 42/42, & MAP FILE 16/10

*Fred M. Darby*  
FRED M. DARBY  
COUNTY SURVEYOR

COUNTY SURVEYOR'S OFFICE  
DO NOT REMOVE THESE MARKS