

COUNTY SURVEYOR  
NOT REMOVE

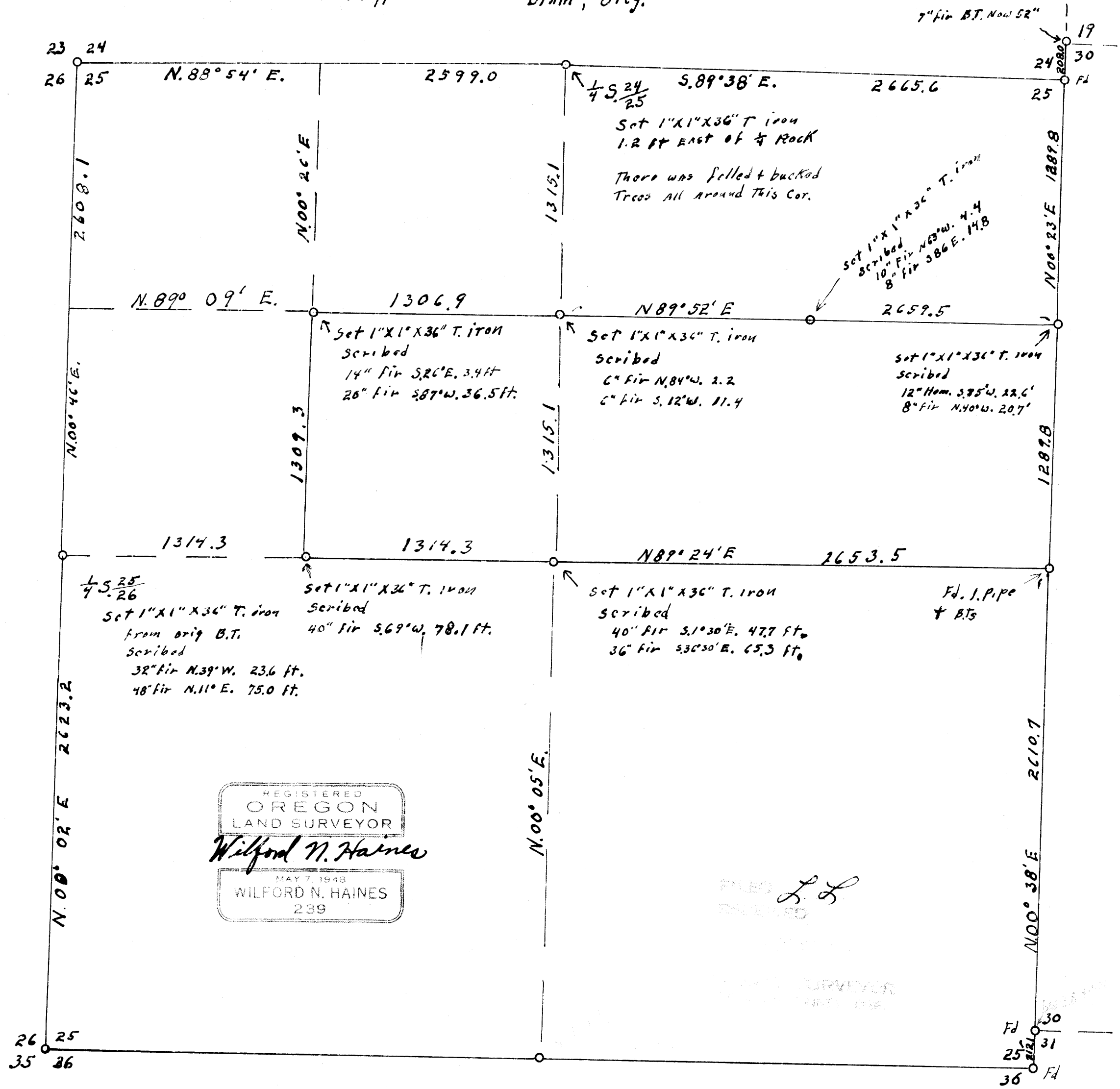
SECT. 25, T.20S., R.7W. W.M.

Scale: 1" = 500'

Drawn Dec. 1961

E.G. Whipple

DRAIN, OREG.



REGISTERED  
OREGON  
LAND SURVEYOR  
*Wilford N. Haines*  
MAY 7, 1948  
WILFORD N. HAINES  
239

FILED  
L. S.  
RECEIVED

COUNTY SURVEYOR  
CLATSOP COUNTY, ORE.

FB H-3  
MAP FILE M 21 + 72