

COUNTY SURVEYORS FILE DATA  
DO NOT REMOVE FROM OFFICE

SECT. 34, T.21S, R.5 W., W.M.

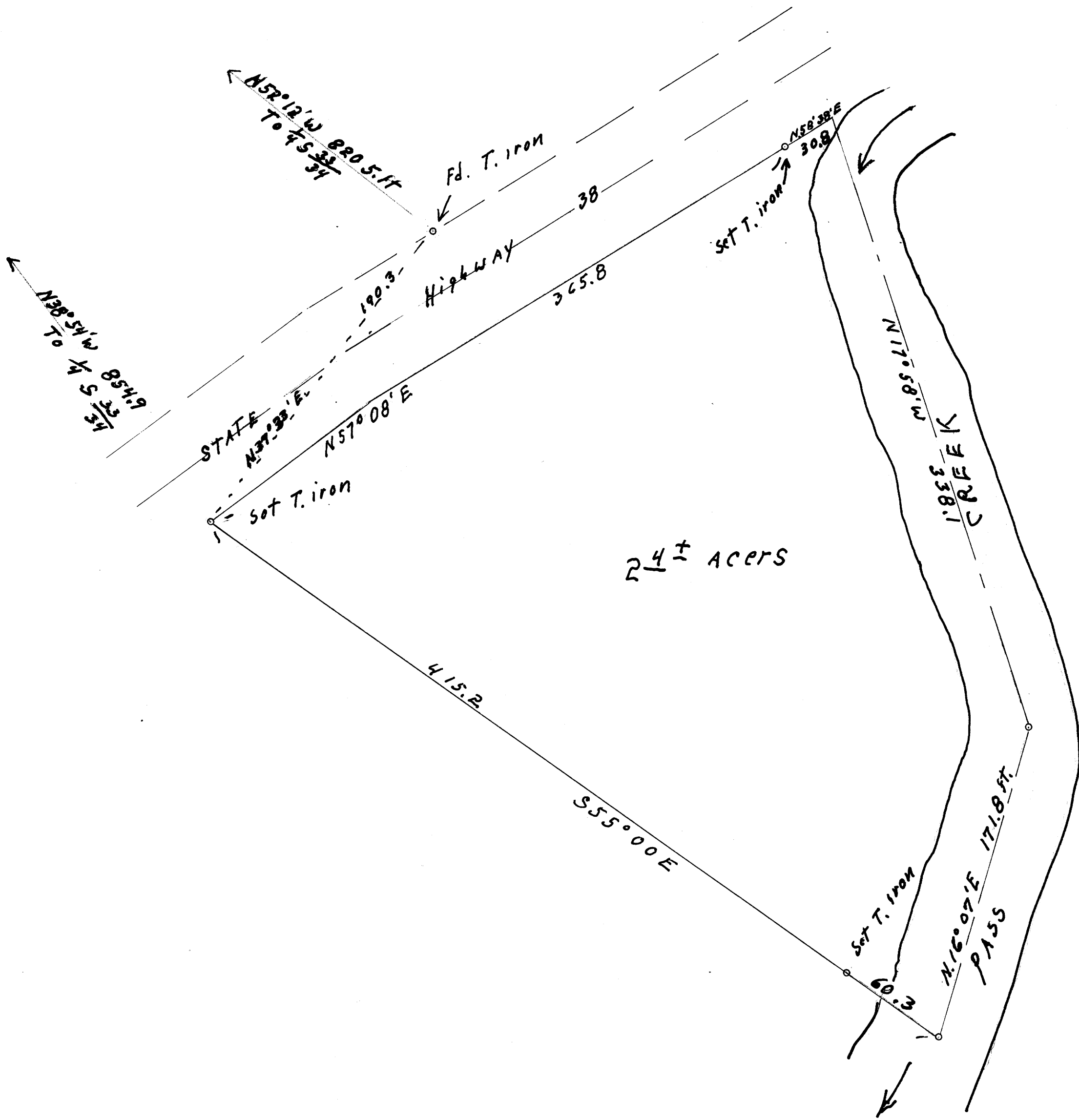
Survey for deed description  
for

John Varnes Drain, Oreg.  
scale 1"=50' July, 1961.

FILED L.L.  
RECEIVED

AUG 18 1961

COUNTY SURVEYOR  
DOUGLAS COUNTY, ORE.



REGISTERED  
OREGON  
LAND SURVEYOR  
*Wilford N. Haines*  
MAY 7, 1948  
WILFORD N. HAINES  
239

MAP FILE M. 21-7

M 21-7