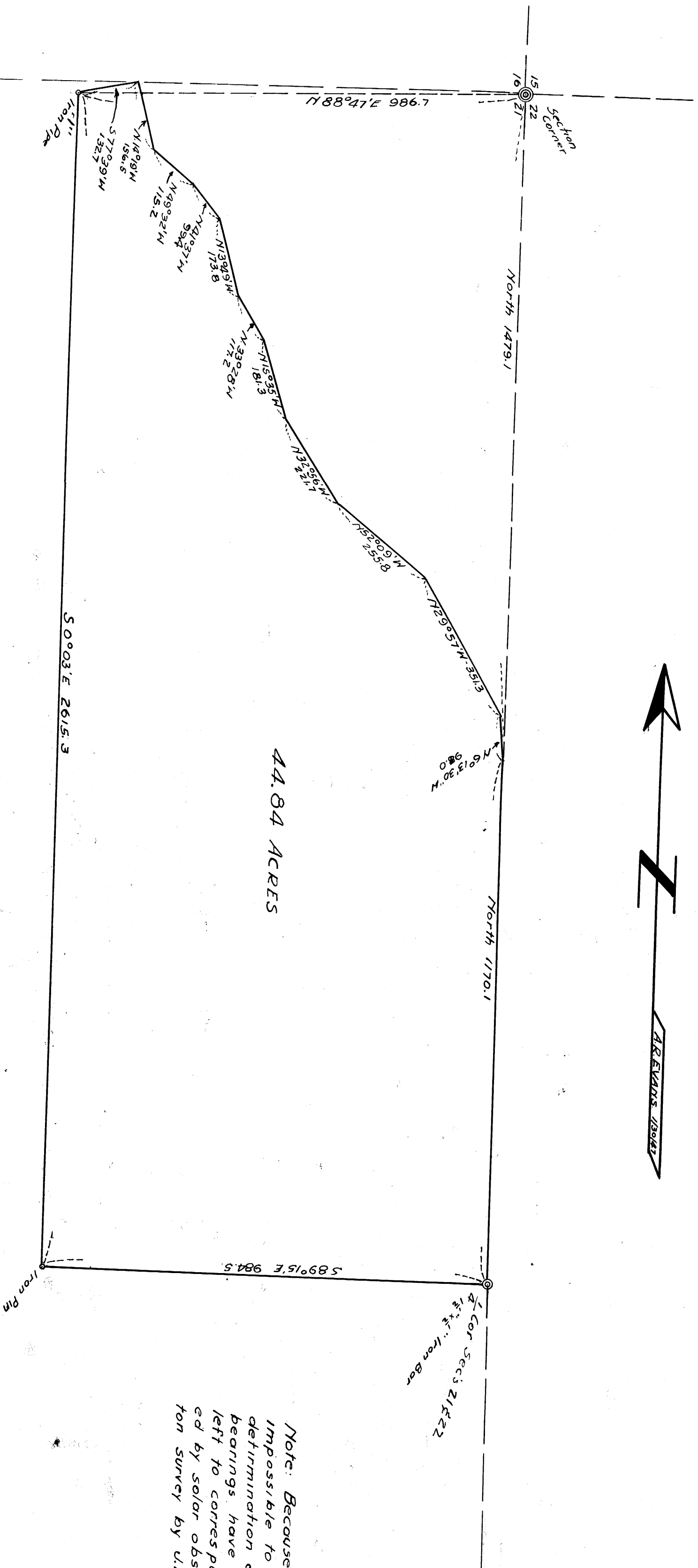
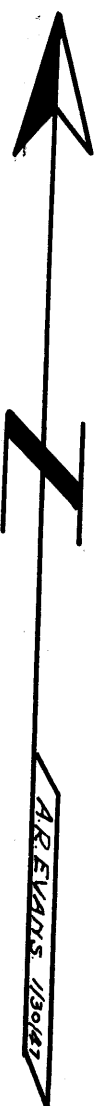


COUNTY SURVEYORS FILE BOOK
DO NOT REMOVE FROM OFFICE

COUNTY SURVEYORS OFFICE
DOUGLAS COUNTY OREGON

SURVEY OF PART OF ALMA HATFIELD
PROPERTY
SECTION 21, T28S, R5W, W.M.
IN
BEN B. IRVING COUNTY SURVEYOR
SURVEYED JAN 22-23 1947 BY
N.E. RICHARDSON DEPUTY
SCALE 1"=200'



44.84 ACRES

Note: Because of weather conditions it was impossible to make a sun observation for determination of true meridian. Therefore, all bearings have been adjusted by 1°30' to the left to correspond with the bearings determined by solar observation in the Hatfield-Pinkerton survey by U.W. Cole, Nov. 1920.