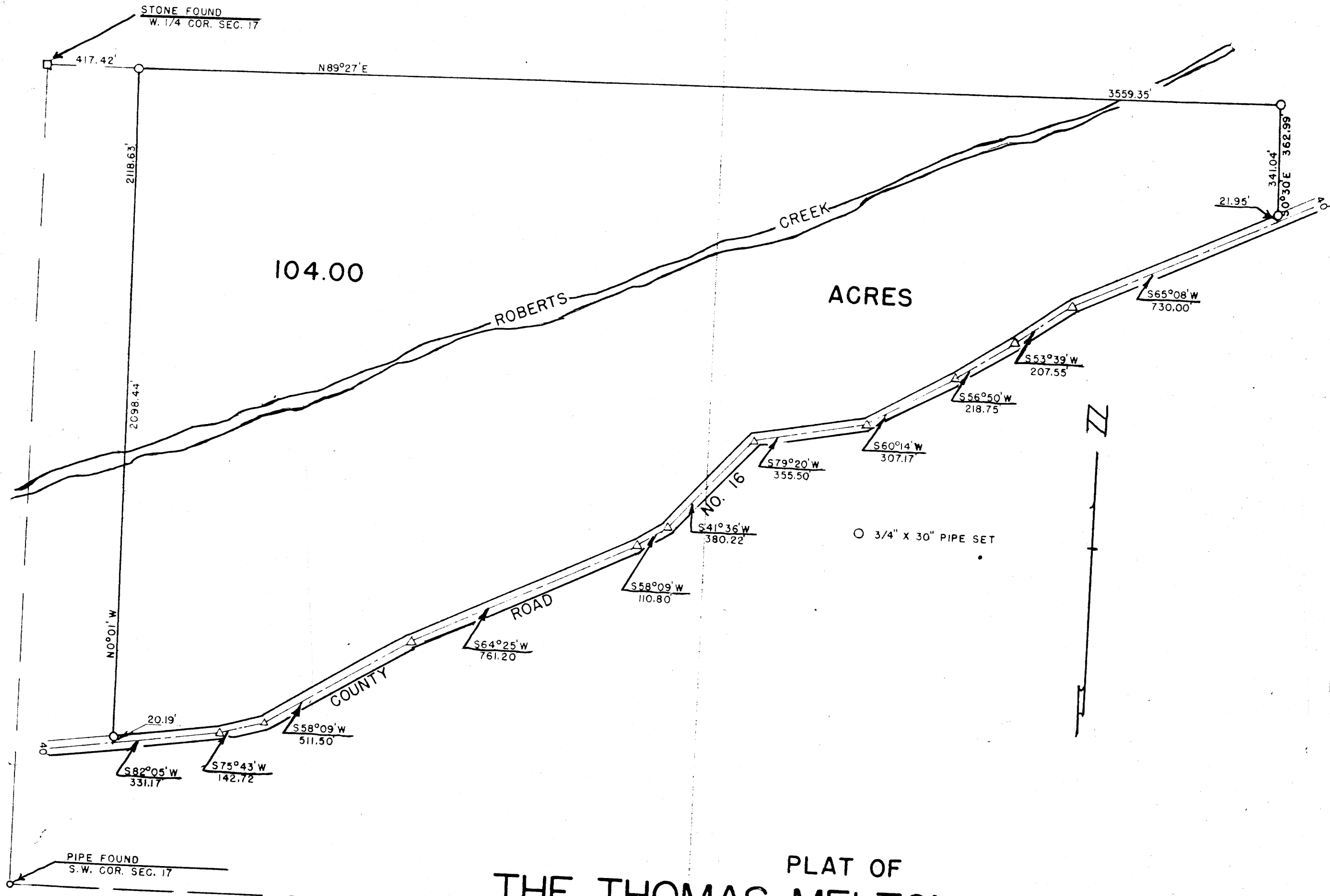


C.S. 40/330
M 21-67



THIS COPY MADE FROM
A XEROX 2510
DATE July 21, 89

PLAT OF
THE THOMAS MELTON PROPERTY
IN SEC. 17 - T28S - R5W - W.M. - DOUGLAS COUNTY, OREGON
MARCH, 1950
SCALE 1" = 300'

COUNTY SURVEYOR
DO NOT REMOVE FROM OFFICE

C.S. 40/330
M 21-67