

NOVEMBER 1961
REV. DEC. 2, 1961 Changed 12' ROAD to 16'
D.R.M.

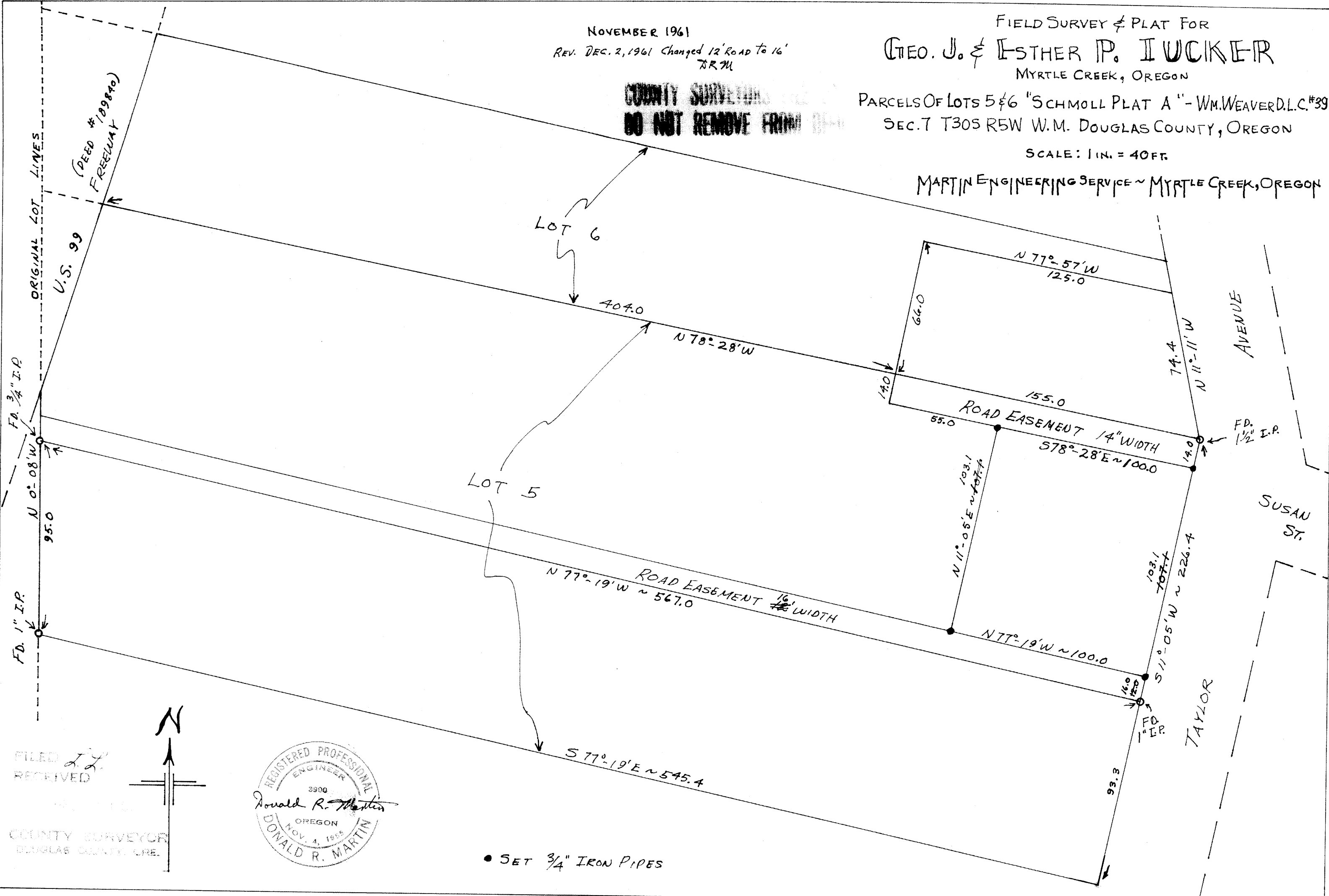
FIELD SURVEY & PLAT FOR
GEO. J. & ESTHER P. LUCKER
MYRTLE CREEK, OREGON

PARCELS OF LOTS 5 & 6 "SCHMOLL PLAT A" - WM. WEAVER D.L.C. #39
SEC. 7 T30S R5W W.M. DOUGLAS COUNTY, OREGON

SCALE: 1 IN. = 40 FT.

MARTIN ENGINEERING SERVICE ~ MYRTLE CREEK, OREGON

COUNTY SURVEYOR
DO NOT REMOVE FROM FILE

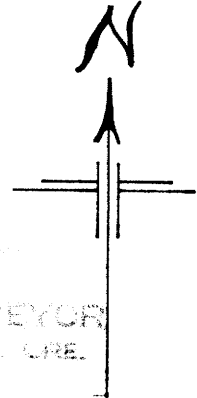


FD. 1" I.P.
N 0°-08'W
95.0
FD. 3/4" I.P.

AVENUE

SUSAN ST.

TAYLOR



FILED
RECEIVED



COUNTY SURVEYOR
DOUGLAS COUNTY, ORE.

• SET 3/4" IRON PIPES

M 31-64