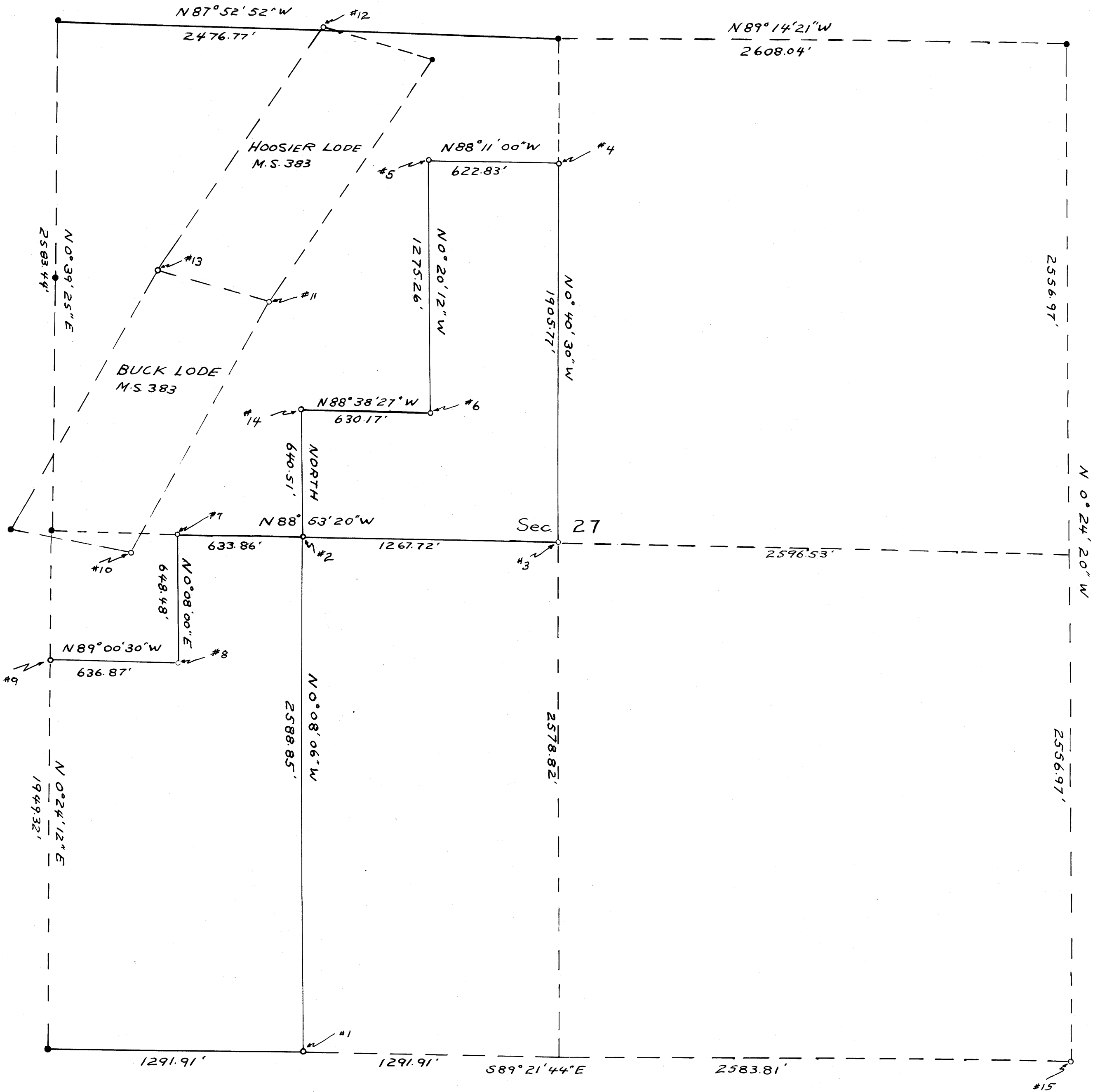


Sec 27, T.32S., R.7W., W.M. ORE.
Douglas County

Scale 1" = 400'

Oct. 13, 1961.

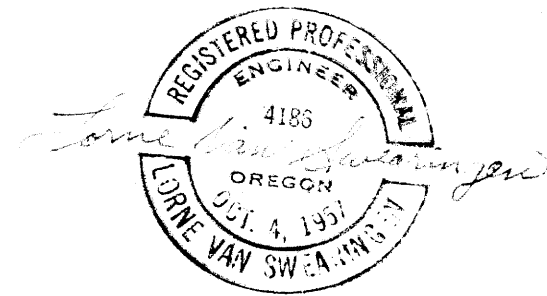


- Found Corners which were monumented
 - Corners monumented with 5/8" x 30" Drill steel
 - Lines Surveyed
 - - - Lines not retraced
- The bearings of all lines based on solar observation

Survey executed for THE ROBERT DOLLAR Co. Glendale Ore.

Bearing tree descriptions

- #1: 22" Fir N 5° 50' W 34.1'; 14" Live oak S 0° 16' W 54.7'
- #2: No Trees available for scribing
- #3: 8" Madrone N 53° 30' E 6.7'; 8" Madrone S 53° 30' W 15.5'
- #4: 6" Incense Cedar N 30° E 13.7'; 36" Ponderosa Pine N 36° W 11.7'
- #5: 12" Incense Cedar S 68° 30' W 13.5'; 4" Incense Cedar S 77° E 8.9' (Corner fell in center of small stream from spring)
- #6: No Trees Scribed.
- #7: 6" Madrone N 18° 30' W 6.1'; 5" Madrone N 45° E 4.7'
- #8: 24" Sugar Pine S 85° W 13.0'; 14" Live oak N 5° W 9.6'
- #9: No Trees Scribed
- #10: Both original Bearing Trees remain; the Pine has blown over
- #11: Original 16" Laurel N 26° E is in; original mound of stones 9/50 in.
- #12: Corner #3 of Hoosier Lode: Fd original bearing Tree 16" Laurel S 18° 45' E 76.0'
- #13: Corner #4 of Hoosier Lode: Fd original bearing tree 14" Laurel S 62° E 7' Scribing visible but in poor condition: {Scribed 6" Fir S 67° 30' W 10.6'
Scribed 4" Fir S 10° 10' E 13.1
- #14: No Trees Scribed
- #15: 2 Original Bearing Trees found but corner was not monumented



RECEIVED
COUNTY SURVEYOR
DOUGLAS COUNTY, ORE.

COUNTY SURVEYORS FILE
DO NOT REMOVE FROM OFFICE