

COUNTY SURVEYORS FILE DATA  
DO NOT REMOVE FROM OFFICE

REGISTERED  
OREGON  
LAND SURVEYOR  
*Wilford N. Haines*  
MAY 7, 1948  
WILFORD N. HAINES  
239

SURVEY TO SET PROPERTY CORNERS  
LOT 4, BLOCK 4 YONCALLA

AUGUST 1961

FOR

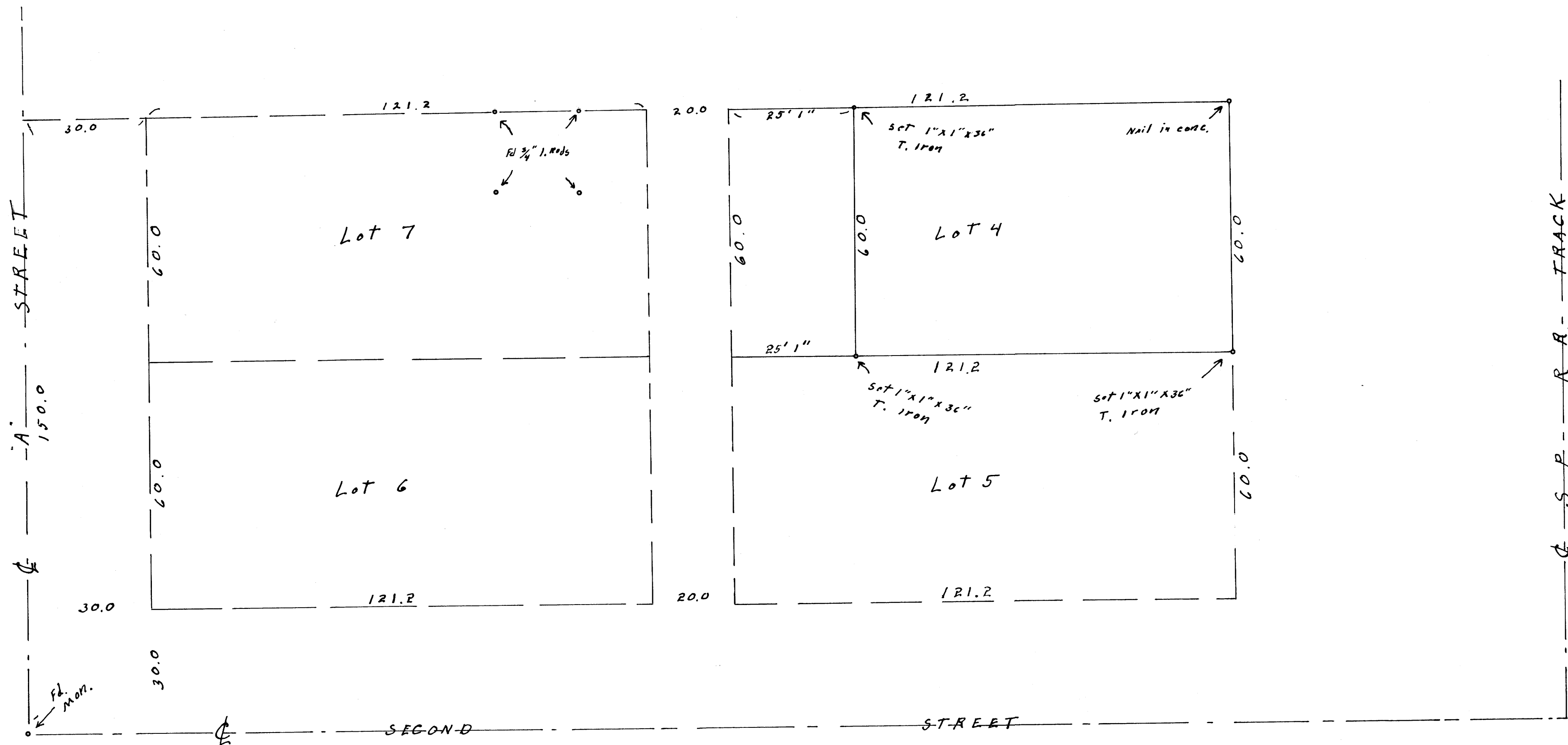
SCALE 1" = 20'

GRAYDON ANDERSON GOLD BEACH, OREGON.

FILED L.L.  
RECEIVED

AUG 18 1961

COUNTY SURVEYOR  
DOUGLAS COUNTY, ORE.



MAP FILE M. 21. 1-6

M 21-6