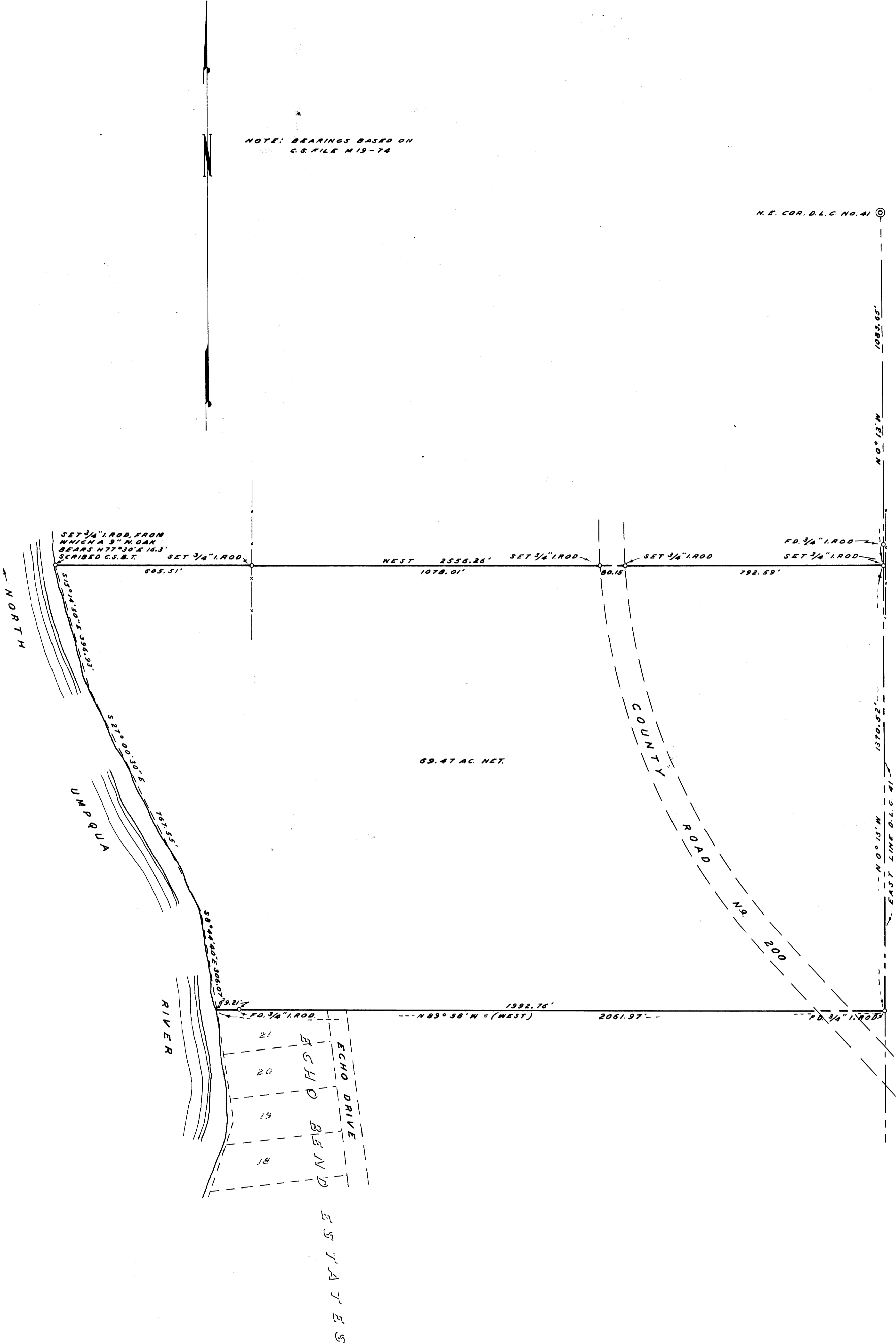


NOTE: BEARINGS BASED ON  
C.S. FILE M 19-74

N.E. COR. D.L.C. NO. 41



COUNTY SURVEYOR'S OFFICE  
DOUGLAS COUNTY, OREGON

SURVEY FOR DEED DESCRIPTION,  
D. L. C. 41, T26S, R.5W, W.M.

FRED M. DARBY COUNTY SURVEYOR  
SURVEYED OCT. 5, 1961 BY  
JAMES W. BYRON-DEPUTY SCALE 1" = 200'  
SURVEYED FOR BOB FRANKS

*James W. Byron*

COUNTY SURVEYOR'S OFFICE  
DO NOT REMOVE