

1/4 NW. Cor. W.P. Hawkins
D.L.C #42
Found. Tp 305-Rg 6W
WM.

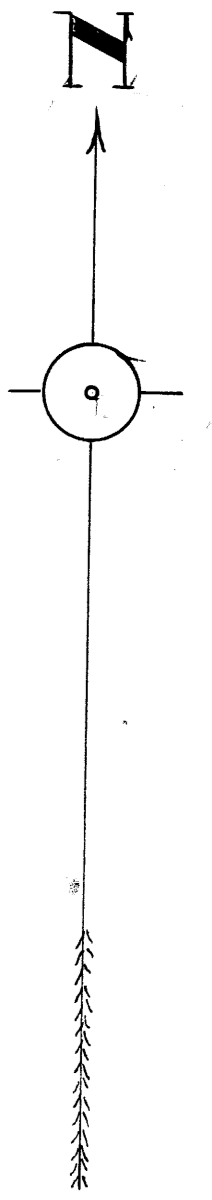
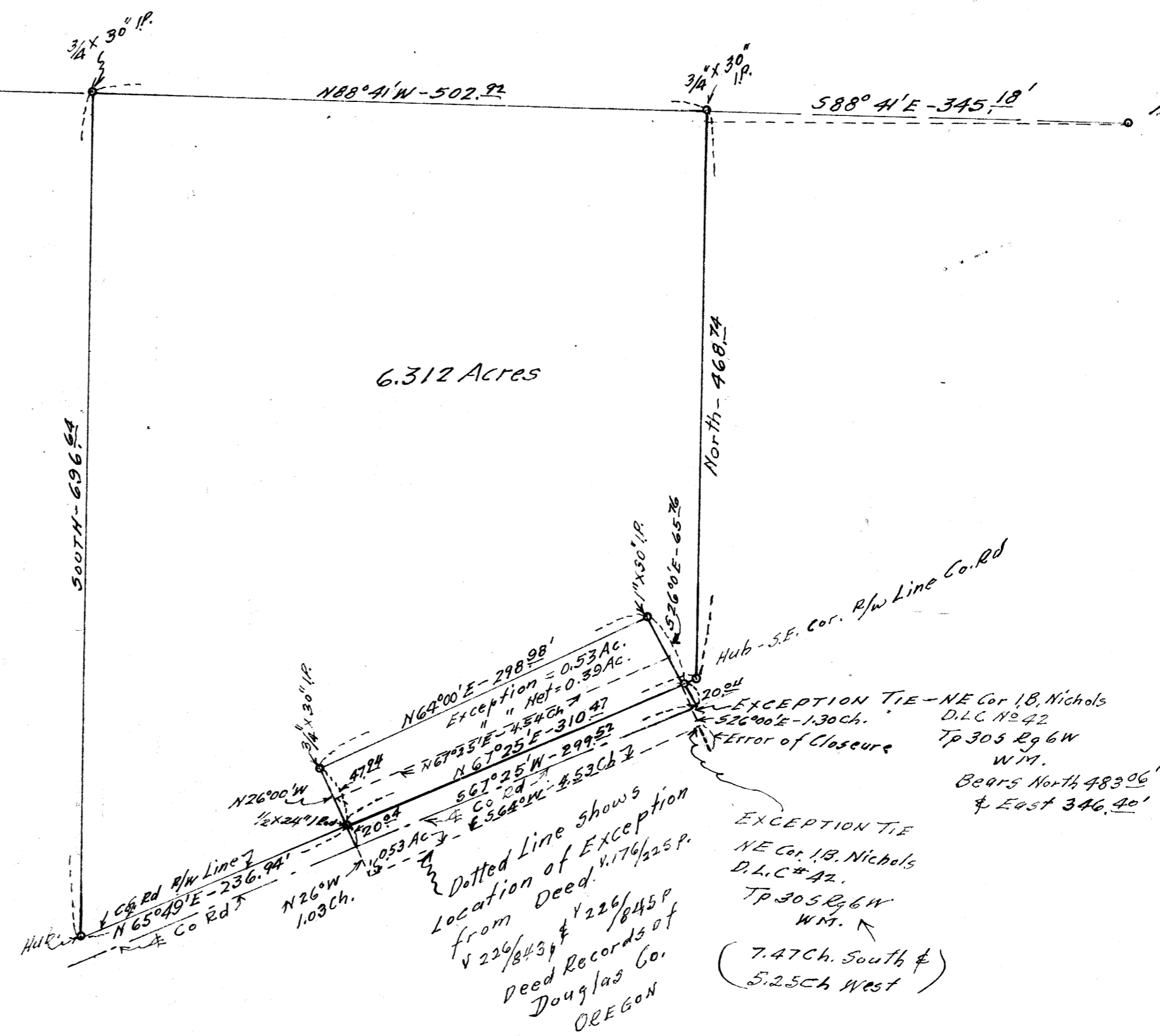
NE Cor W.P. Hawkins
D.L.C #42
Tp 305 Rg 6W
WM.
I.P. Brass Cop.
Co. Surveyor.

MAP
SHOWING LANDS SURVEYED
FOR
EVERETT JRD & LOLA L. COCKRELL
IN
SEC. 26-TP. 305-RG 6W WM.
SCALE-1"=100' MARCH-1956.

COUNTY SURVEYORS FILE HERE
DO NOT REMOVE FROM OFFICE

Edwin S. Woodford

MAP FILE M 21-57



M 21-57

FILED
RECEIVED
JUL 2 1956
COUNTY SURVEYOR
DOUGLAS COUNTY, ORE.