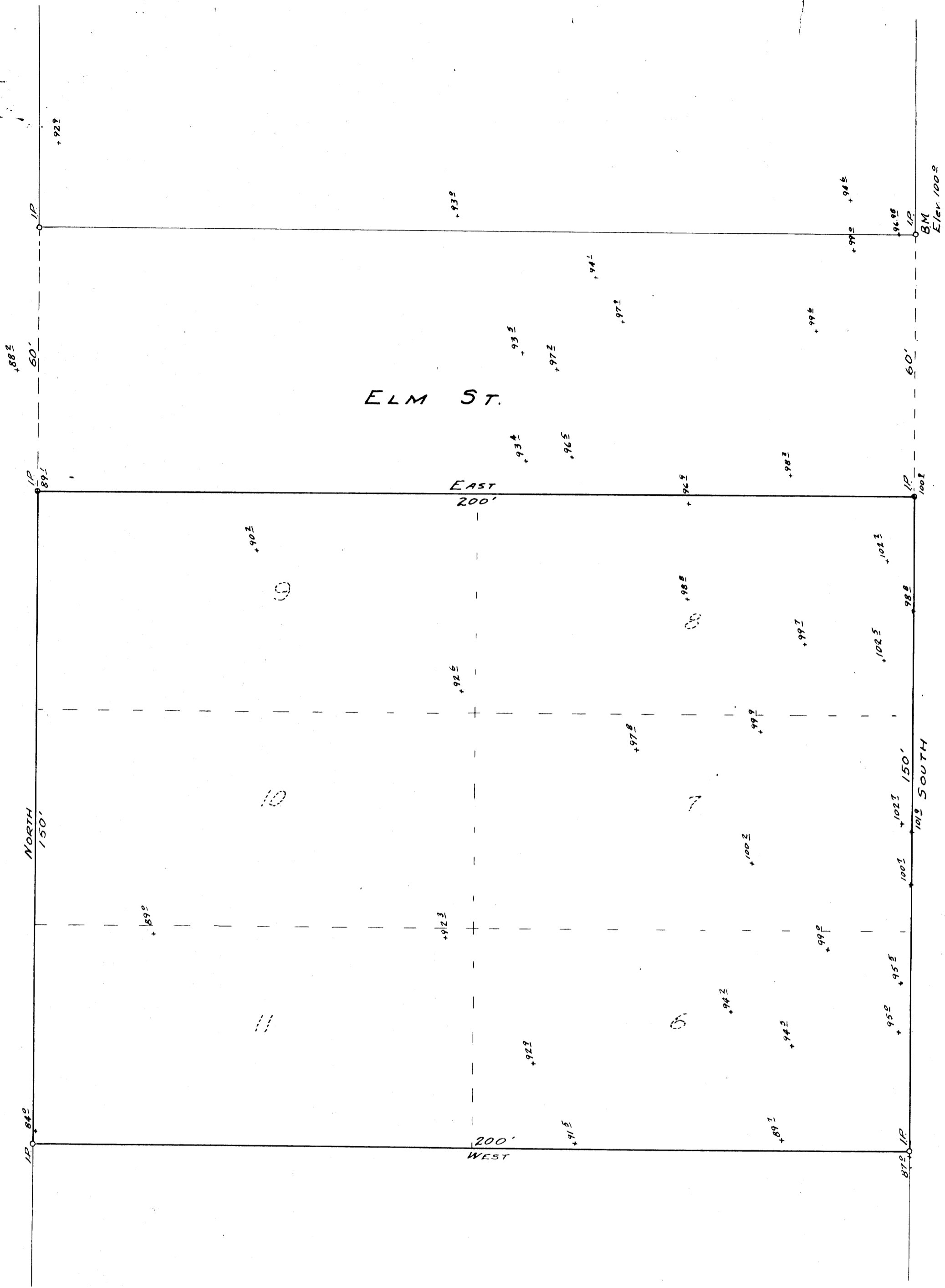


MZ1-55



MAP OF
 LOTS 6-11, BLOCK 4
 RIVERSIDE ADDITION TO
 ROSEBURG, OREGON
 SHOWING ELEVATIONS AT BREAKS
 APRIL 3, 1948

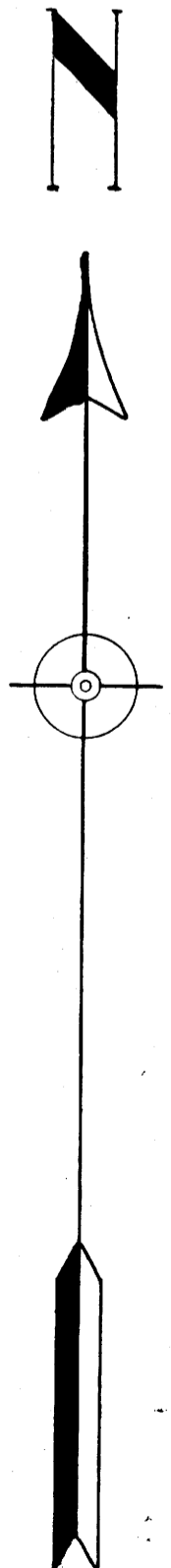
Scale - 1-inch = 20 ft.

Edwin S. Woodford

THIS COPY MADE FROM
 A XEROX 2510
 DATE July 20, 89

FILED
 RECEIVED
 JUN 1961
 COUNTY SURVEYOR
 DOUGLAS COUNTY, ORE.

COUNTY SURVEYORS FILE DATA
 DO NOT REMOVE FROM OFFICE



MZ1-55