

THIS COPY MADE FROM
A XEROX 2510

DATE July 20, 89

FILED
RECEIVED

JUN 9 1961

COUNTY SURVEYOR
DOUGLAS COUNTY, ORE.

MAP SHOWING

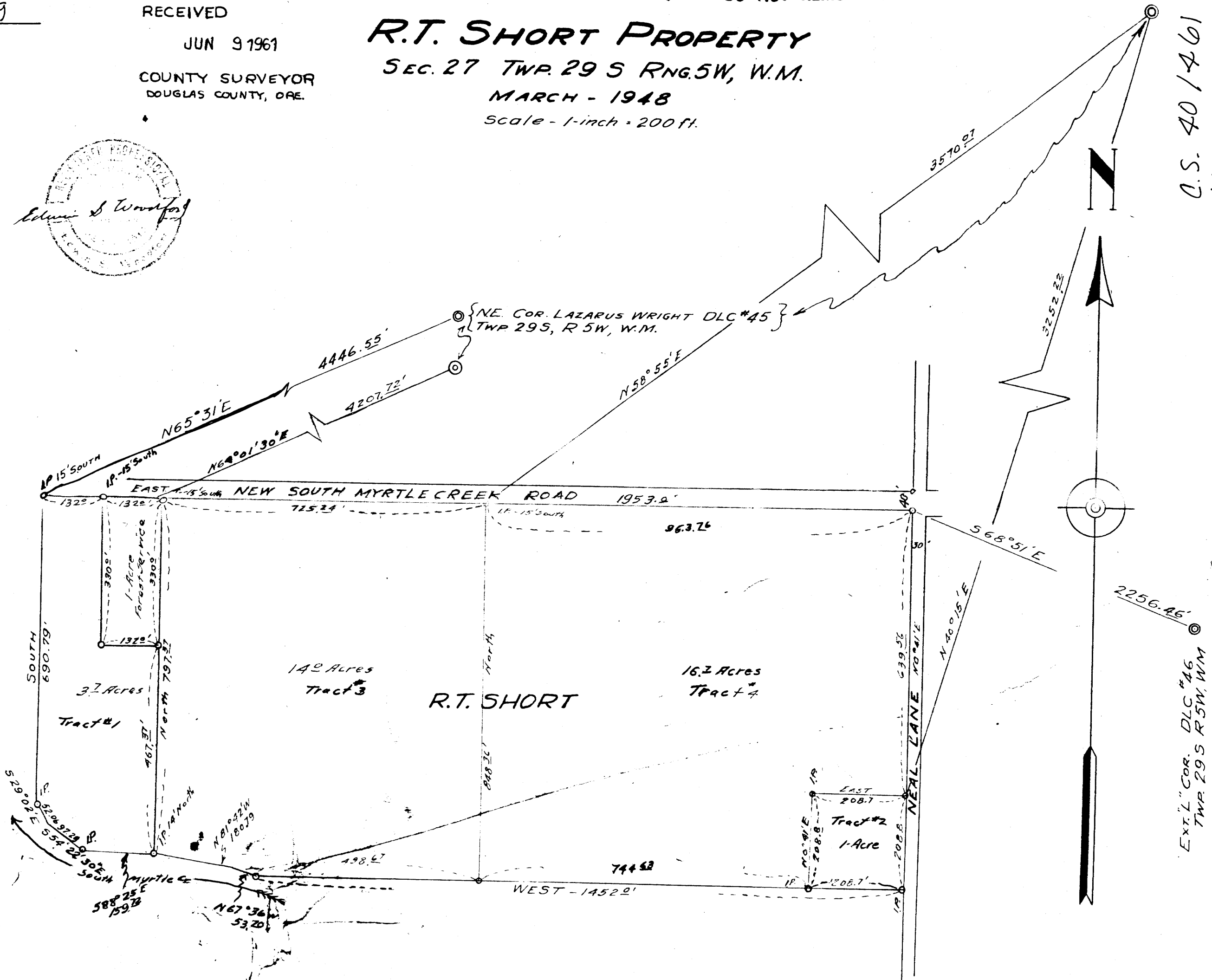
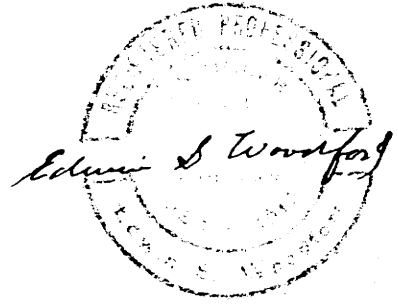
R.T. SHORT PROPERTY

SEC. 27 TWP. 29 S RING. 5 W, W.M.

MARCH - 1948

Scale - 1-inch = 200 ft.

COUNTY SURVEYORS FILE DATA
DO NOT REMOVE FROM OFFICE



C.S. 40/461
M 21-51

EXT. L. COR. DLC #46
TWP. 29 S R 5 W, W.M.

M 21-51
C.S. 40/46

CS FILE FOLDER

CONTAINS

MORE

INFORMATION