

MAP
SHOWING ADDITION
to
Lot-1 Block-7
PLAT A-HUCREST

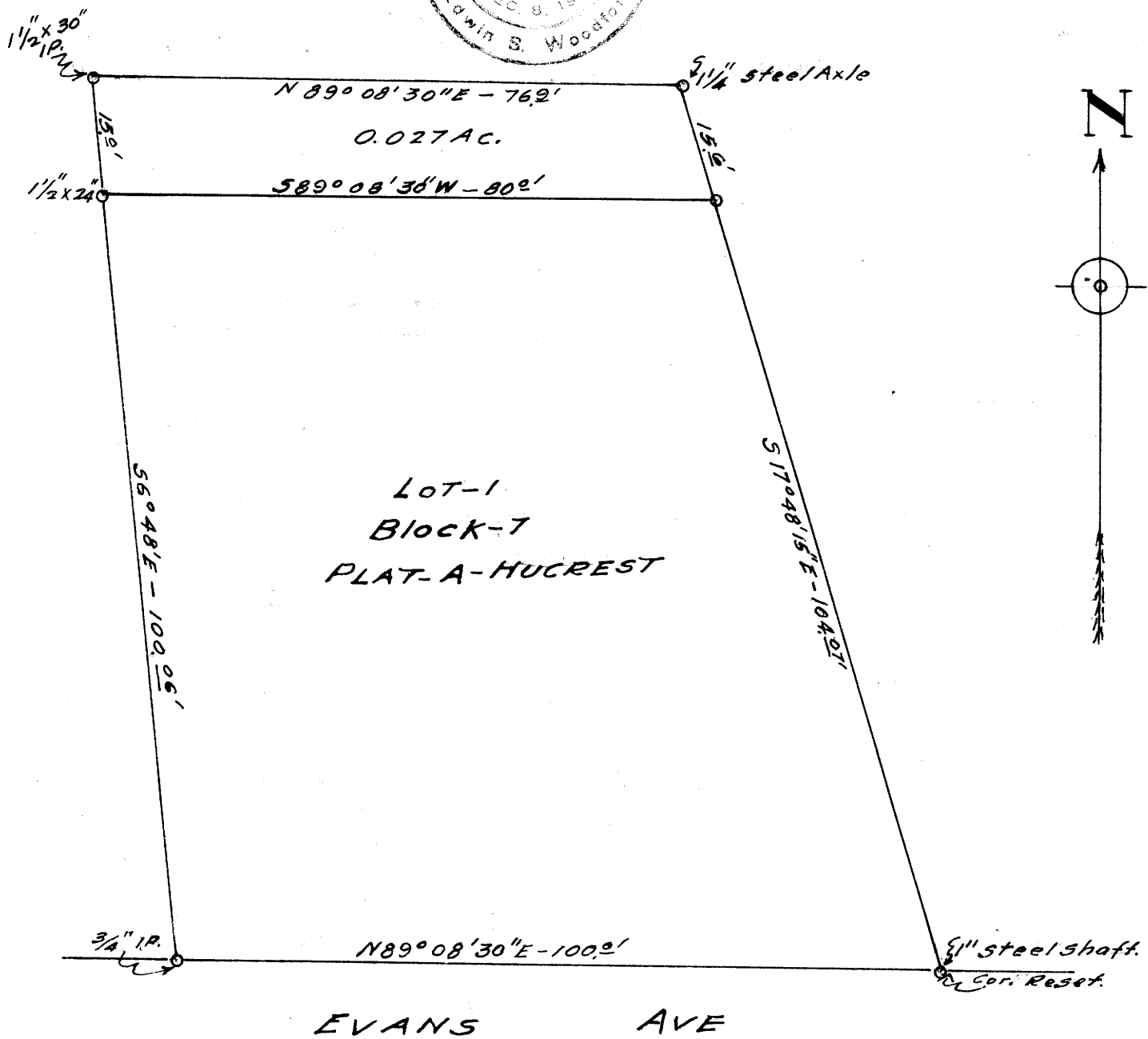
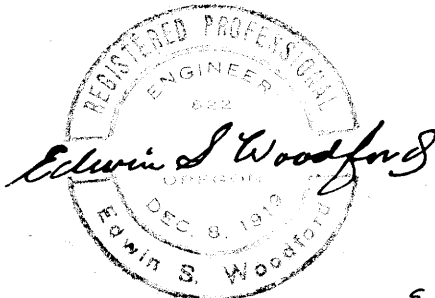
Surveyed by Edwin S. Woodford
Reg. Prof. Engineer.

Scale - 1" = 20' Oct. 1951.

FILED
RECEIVED

JUL 9 1951

COUNTY SURVEYOR
DOUGLAS COUNTY, ORE.



Lot-1
Block-7
PLAT-A-HUCREST

EVANS AVE

FOR CECIL HUGH S. 11, T. 27-6W

40 / 454

M21-46