

COUNTY SURVEYORS FILE DATA  
DO NOT REMOVE FROM OFFICE

# SURVEY FOR DEED DESCRIPTIONS IN NE $\frac{1}{4}$ , SW $\frac{1}{4}$ , S 34, T21S, R5W.WM.

Sept. 1961

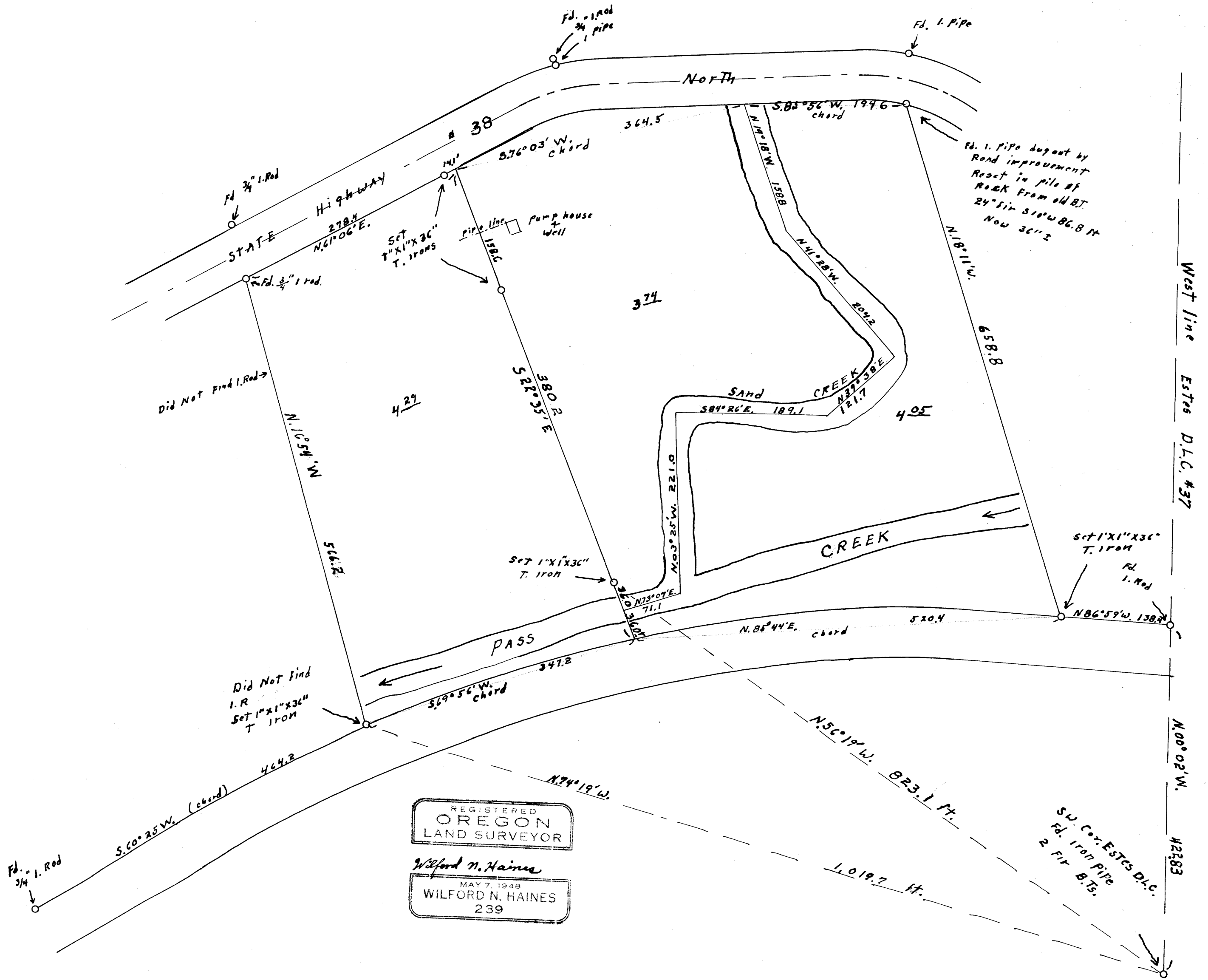
FOR PACIFIC REALTY, DRAIN, OREGON

Scale 1 inch = 100 FT.

FILED  
RECEIVED

SEP 12 1961

COUNTY SURVEYOR  
DOUGLAS COUNTY, ORE.



REGISTERED  
OREGON  
LAND SURVEYOR

Wilford N. Haines  
MAY 7, 1948  
WILFORD N. HAINES  
239

MAP FILE M 217 40

M 21-40