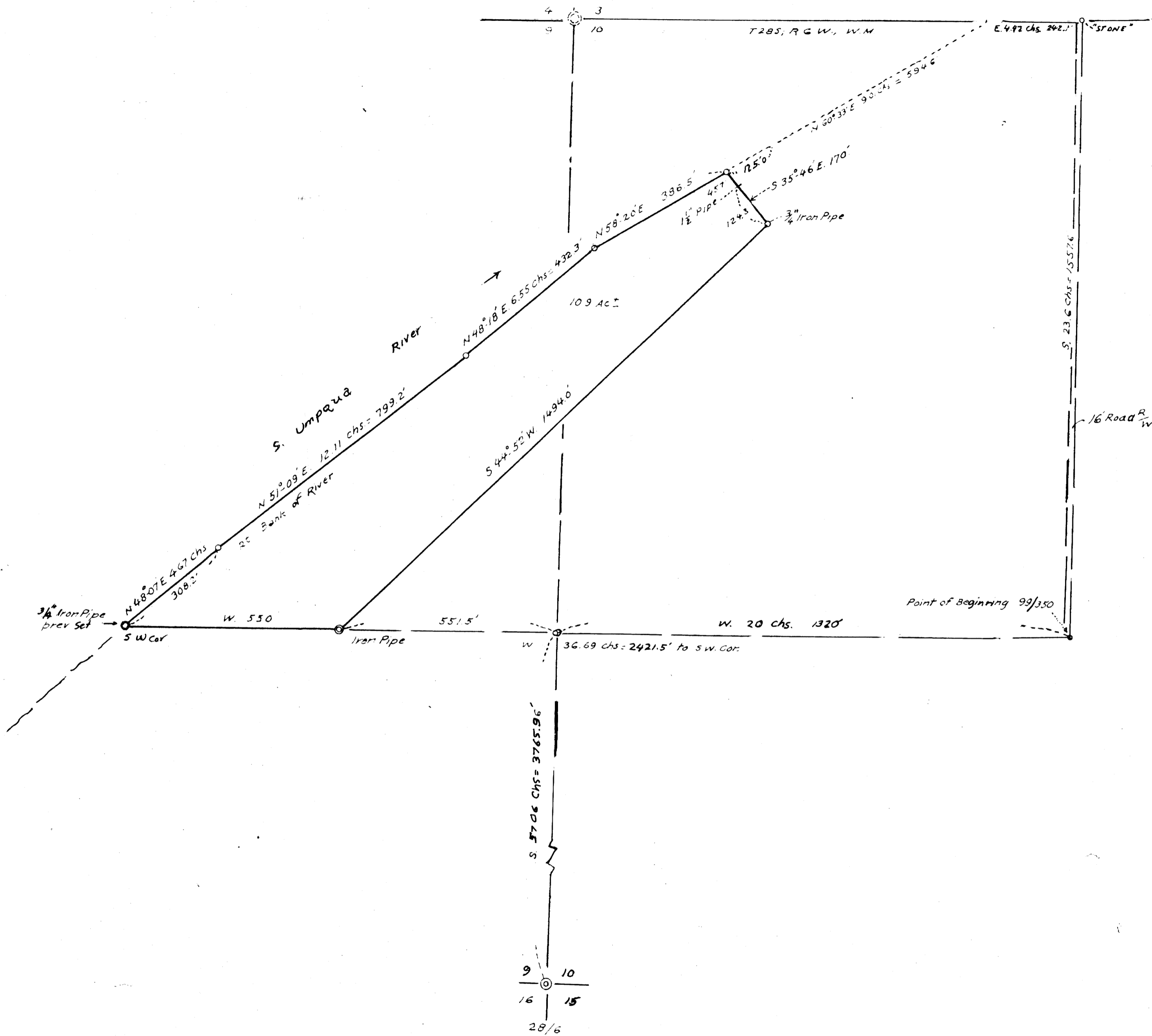


THIS COPY MADE FROM  
A XEROX 2510  
DATE July 20, 89



M 21-36

M 21-36

FILED  
RECEIVED  
SEP 29 1961  
COUNTY SURVEYOR  
DOUGLAS COUNTY, ORE

MERL & BERNICE AUSTIN  
TO Wm. AUSTIN ET. UX.  
PORTION OF 99/350 #6433 IN NW<sup>1</sup> SEC 10,  
& IN NE<sup>1</sup> SEC 9, T. 28S., R. 6 W., W.M., DOUGLAS COUNTY,  
SEPT. 1961 *Stambaugh* 1" = 200'

COUNTY SURVEYORS FILE DATA  
DO NOT REMOVE FROM OFFICE

