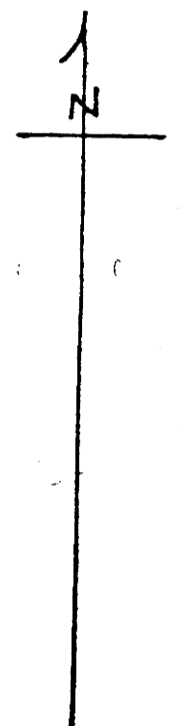
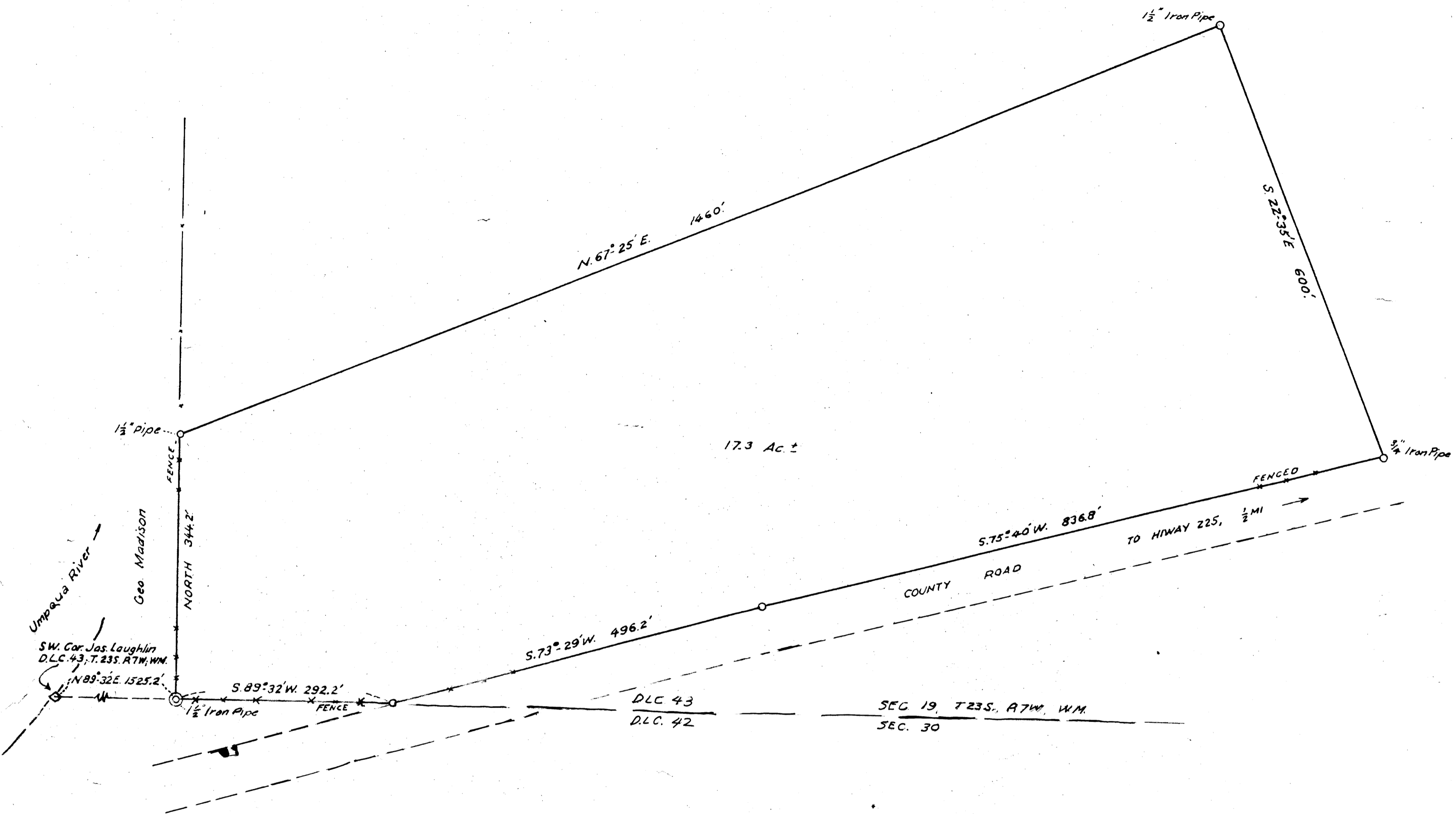


M21-35



M21-35

Umpqua River
Geo. Madison
SW. Cor. Jas. Laughlin
D.L.C. 43, T. 23S. R7W, W.M.

DLC 43
DLC 42

SEC. 19, T23S., R7W, W.M.
SEC. 30

FILED
RECEIVED
SEP 26 1961

COUNTY SURVEYOR
DOUGLAS COUNTY, ORE.

COUNTY SURVEYOR FILE DATA
DO NOT REMOVE THESE OFFIC.

RETAINED PORTION BOYD RADER RANCH
IN JAS. LAUGHLIN D.L.C. 43, SEC. 19, T23S., R7W, W.M.,
DOUGLAS COUNTY, ORE.
AUG. 1961

Arthur J. ...
1" = 100 ft.

THIS COPY MADE FROM
A XEROX 2510
DATE July 20, 89