

COUNTY SURVEYOR THE DATA
DO NOT REMOVE FROM OFFICE

L.L.

COUNTY CLERK FOR
SOUTH OREGON

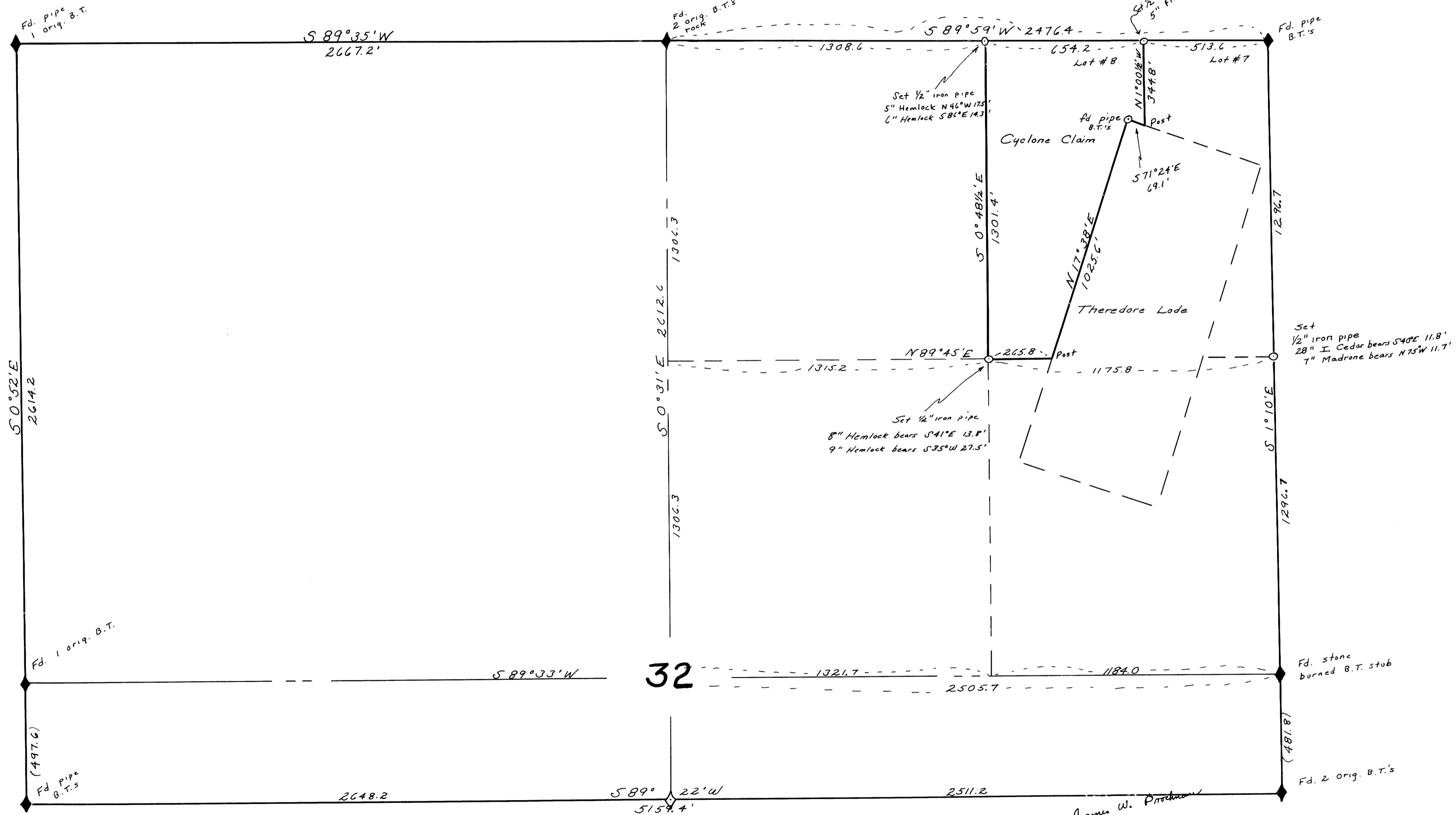
SURVEY

For Harold Reynolds, Albany, Oregon

Lot #8, Section 32, T30S, R4W, W. M.

Scale 1" = 300'

September 22, 1961



James W. Prockman

M 21 - 33

M 21 - 33