

**ALFRED MOORE'S PROPERTY**

LOTS 10-11-12 LONDON & WHEELER'S ADDN.  
AND METES & BOUNDS DESCRIPTION  
ROSEBURG OREGON

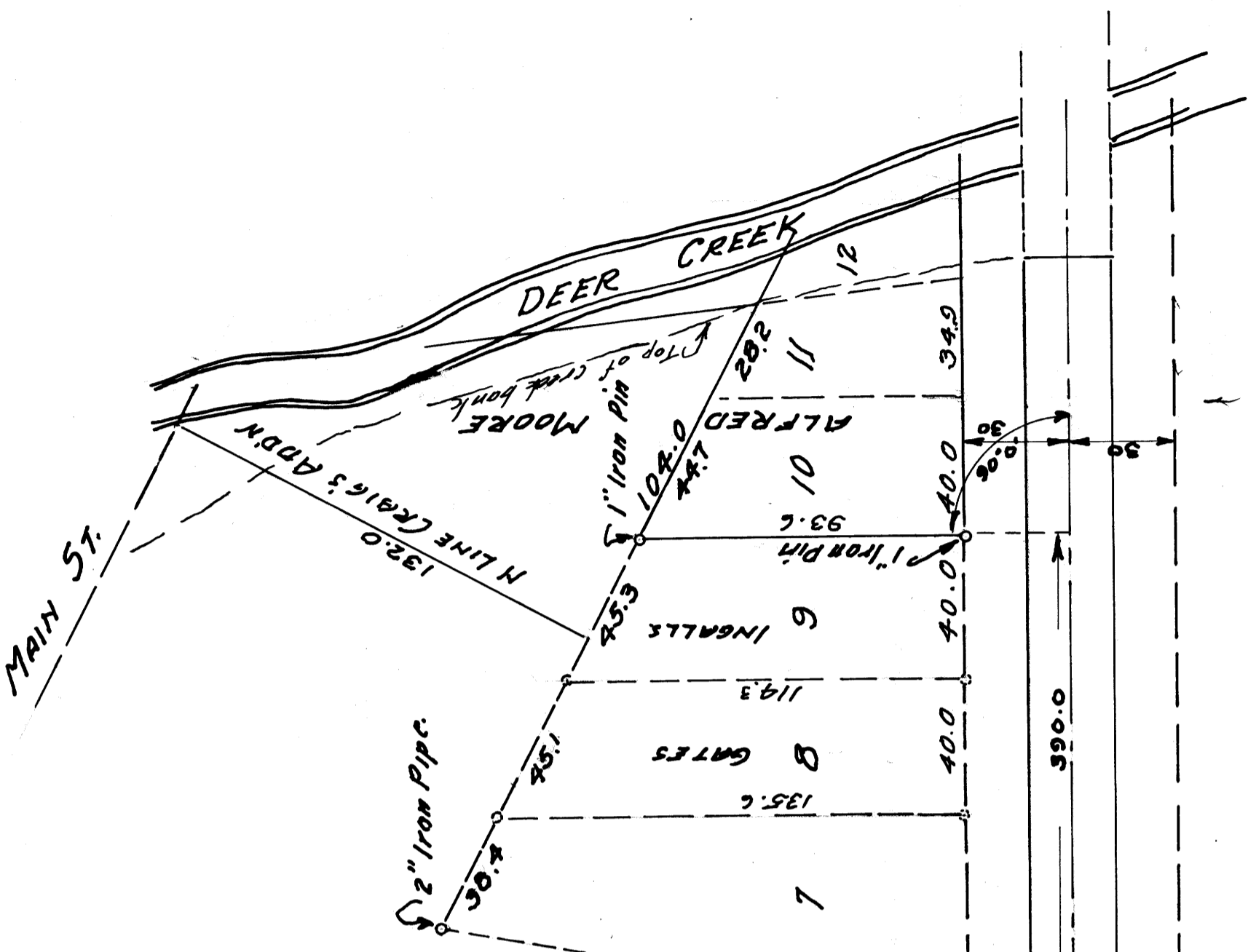
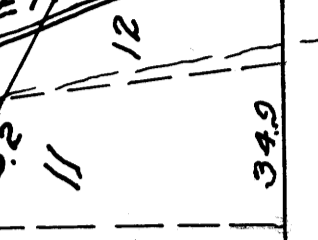
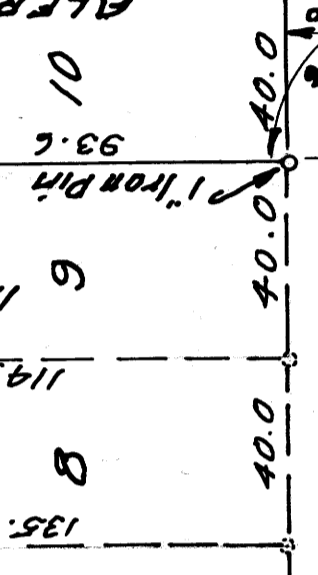
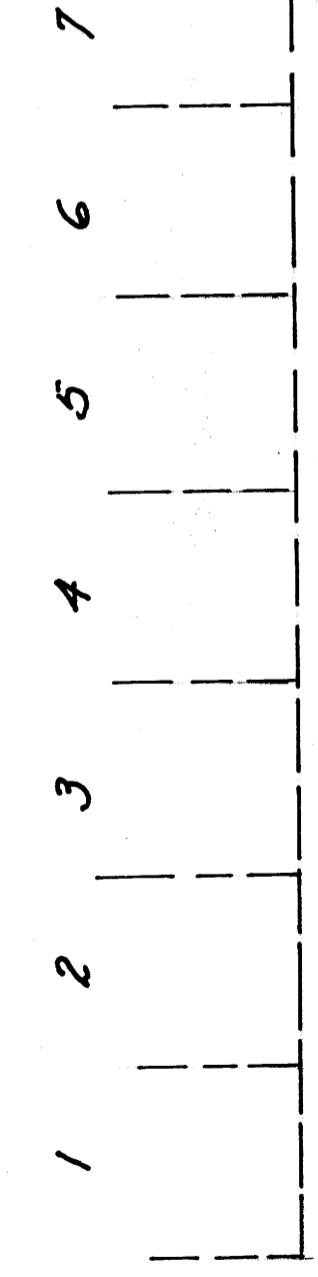
SURVEYED JANUARY 10 1945 BY  
**BEN. B. IRVING**  
COUNTY SURVEYOR

COUNTY SURVEYOR'S FILE DATA  
**DO NOT REMOVE FROM OFFICE**

NOTE:-  
Lot 8 Surveyed 1915 by L.G. Hicks and pipes set  
for corners. These pipes are not in place now.  
No survey made for N. Line Craig's Addn.  
Property as located conforms to local established  
fences.

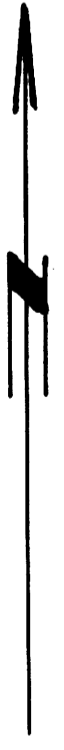
LONDON & WHEELER'S ADDN.

COURT ST



FOWLER ST.

L-Curb



SCALE 1" = 40'

M21-32  
38/11  
C.S. FILE