

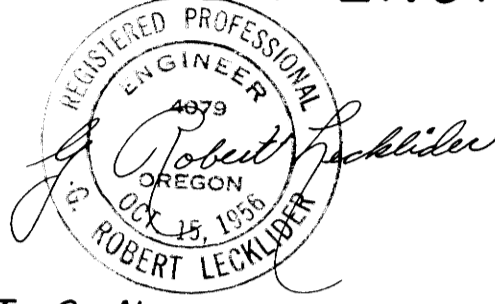
COUNTY SURVEYORS FILE DATA  
DO NOT REMOVE FROM OFFICE

# SURVEY IN BLOCKS 31 & 32 PLAT OF CITY OF ROSEBURG ROSEBURG, DOUG. COUNTY, ORE.

SURVEYED FOR: LOCKWOOD MOTOR CO.  
SURVEYED BY: G. R. LECKLIDER-ENGR.

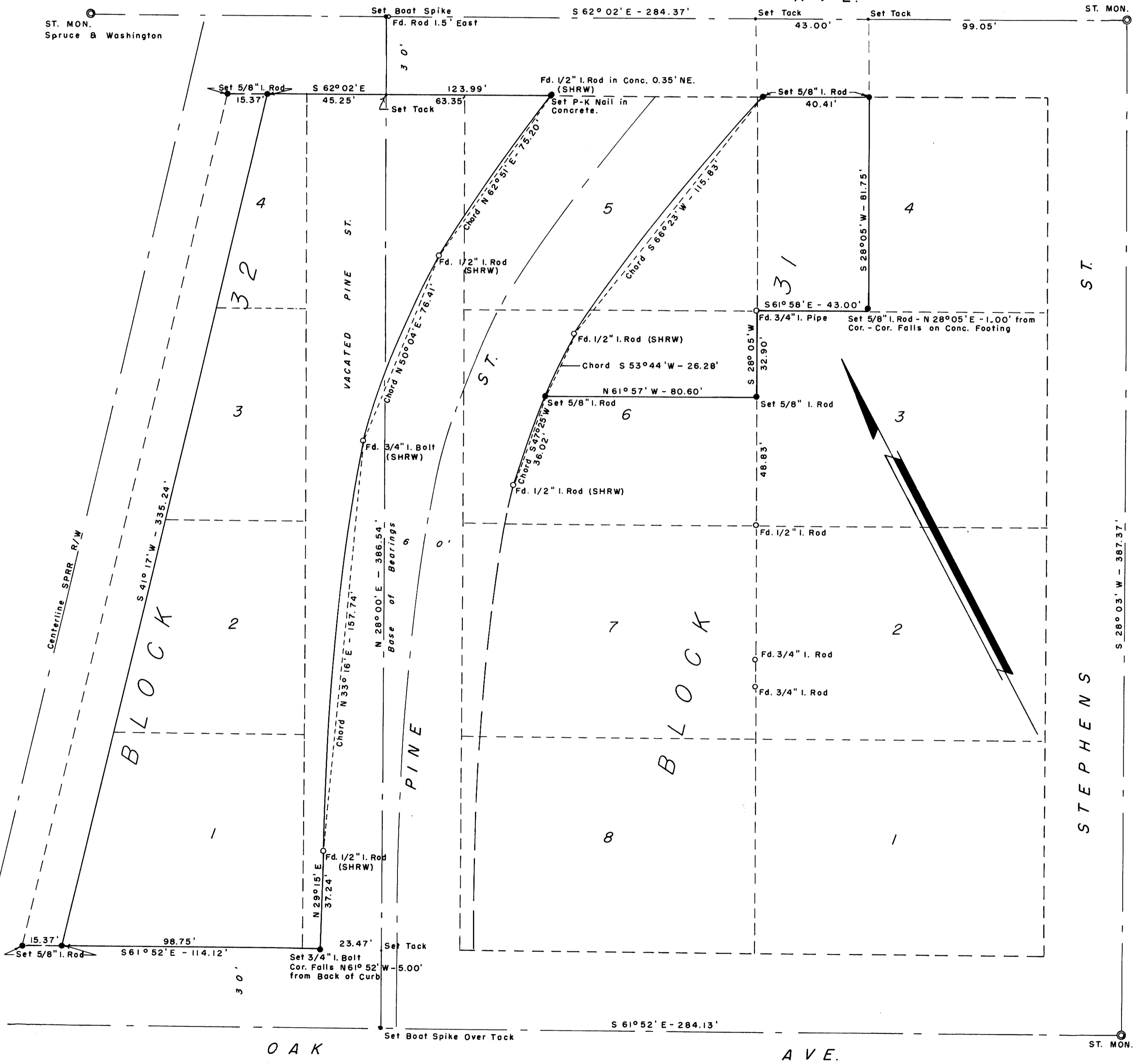
SEPT, 1961  
SCALE: 1" = 30'

REFER TO C.S. MAP FILE 8-64



WASHINGTON

AVE.



FILED L.L.  
RECORDED  
COUNTY CLERK  
ROSEBURG, OREGON