

-21-

COUNTY SURVEYORS FILE DATA

PROPOSED SUBDIVISION DO NOT REMOVE FROM OFFICE

of -

PAUL KISTLER PROPERTY

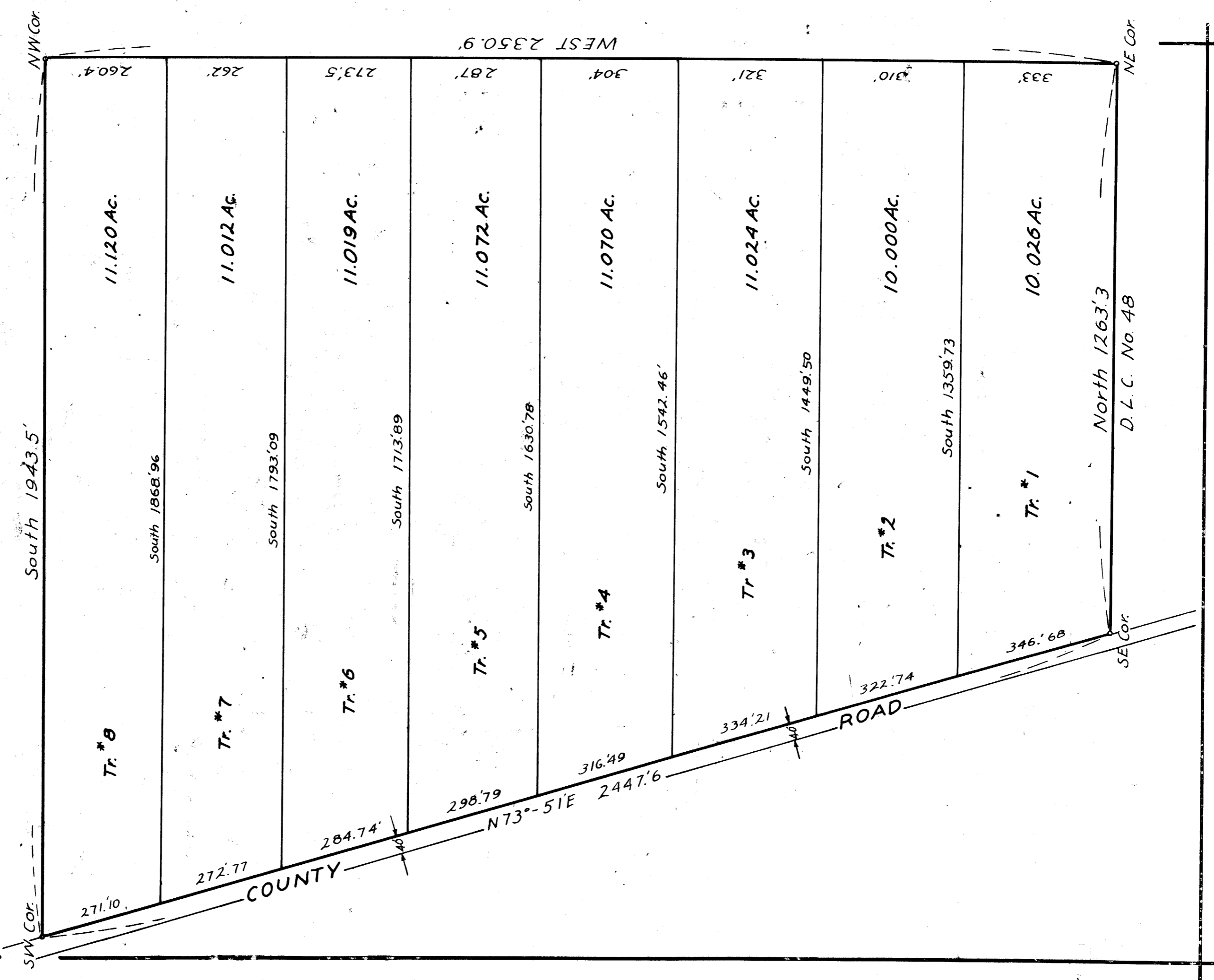
SEC. 13. T29S. R5W. W.M.

SCALE = 1 inch = 200 feet

FILED RECEIVED

JUL 1961

COUNTY SURVEYOR DOUGLAS COUNTY, ORE.



SW Cor

South 1943.5'

NW Cor

271.10

Tr. #8

11.120 AC.

260.4'

South 1868.96'

272.77

Tr. #7

11.012 AC.

262'

South 1793.09'

284.74'

Tr. #6

11.019 AC.

273.5'

South 1713.89'

298.79

Tr. #5

11.072 AC.

287'

South 1630.78'

316.49

Tr. #4

11.070 AC.

304'

South 1542.46'

334.21

Tr. #3

11.024 AC.

321'

South 1449.50'

ROAD

322.74

Tr. #2

10.000 AC.

310'

South 1359.73'

346.68

Tr. #1

10.026 AC.

333'

North 1263.3'

SE Cor

D. L. C. No. 48

NE Cor

40 / 132

M21 - 15 P