

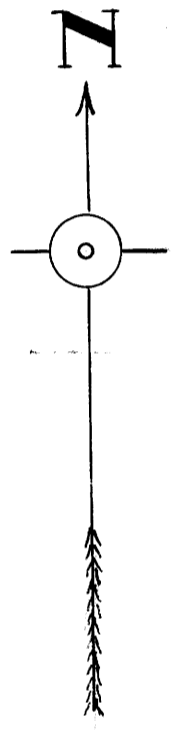
COUNTY SURVEYORS FILE DATA  
DO NOT REMOVE FROM OFFICE

MAP  
OF  
W.M. DEAN PROPERTY.  
IN  
SECTION-11-Tp.31S-Rg.5W.WM.  
SCALE-1"=100.

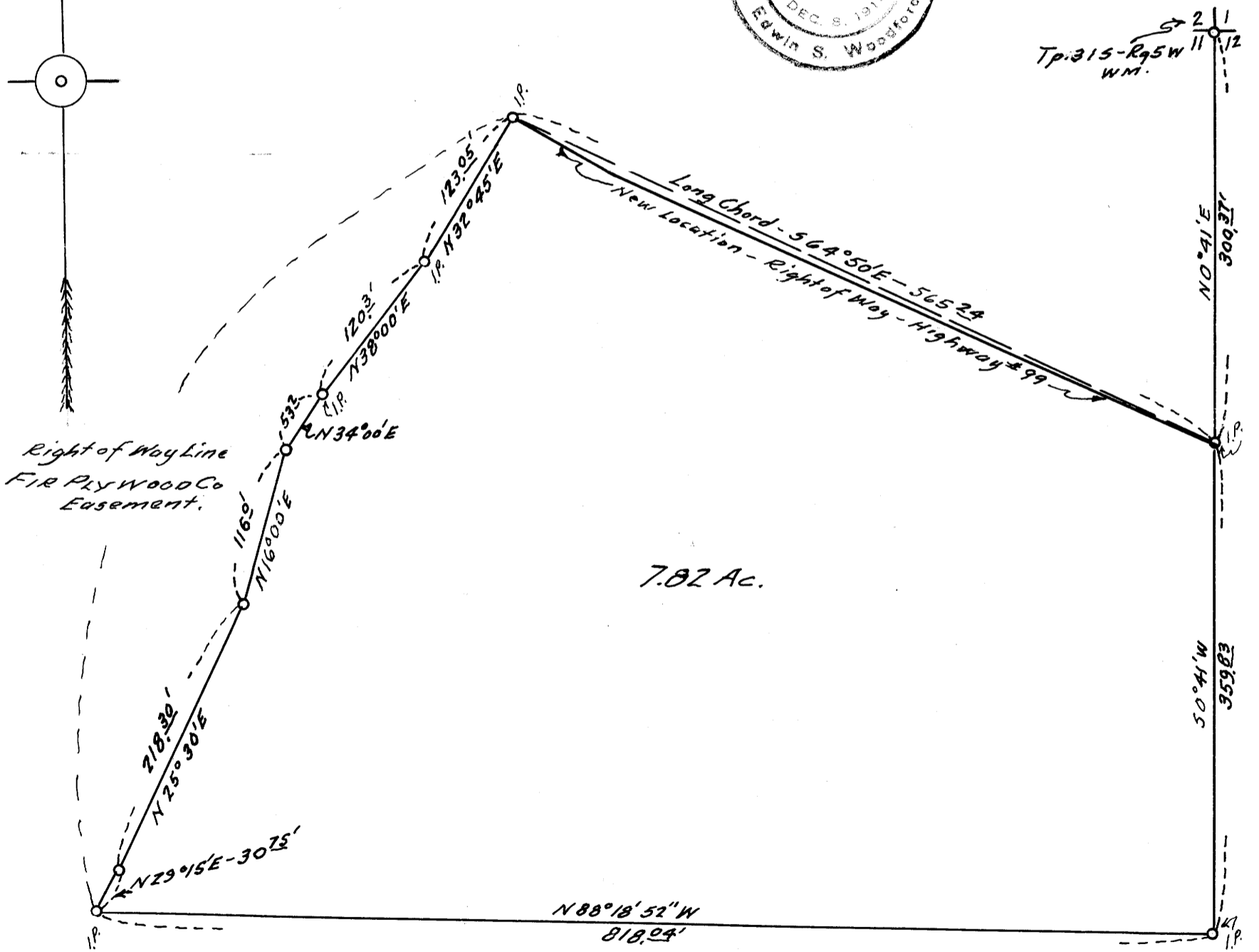
FILED  
RECEIVED

JUN 5 1931

COUNTY SURVEYOR  
DOUGLAS COUNTY, ORE.



Right of Way Line  
FIR PLYWOOD Co  
Easement.



7.82 Ac.

CS FILE FOLDER

CONTAINS

MORE

INFORMATION