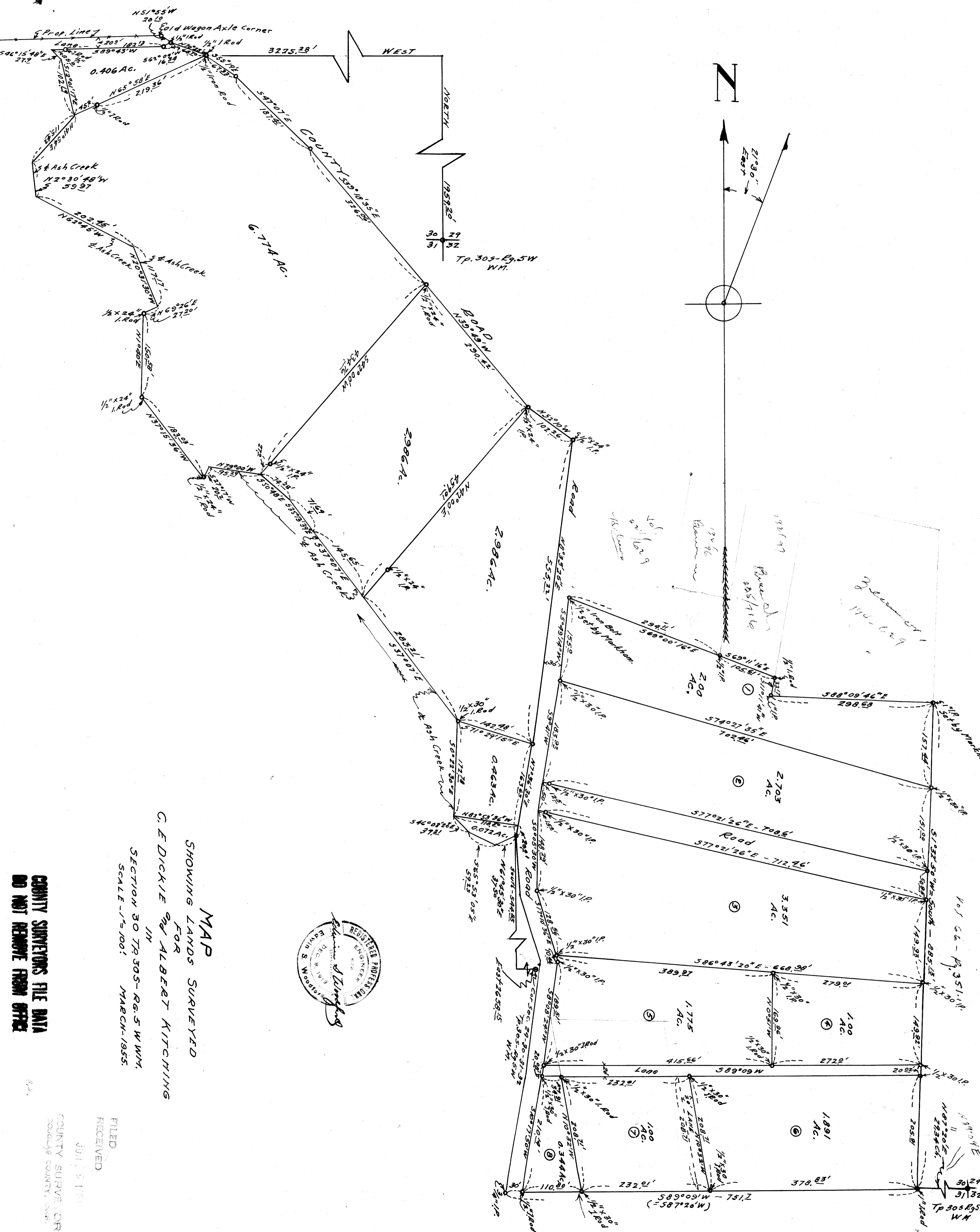
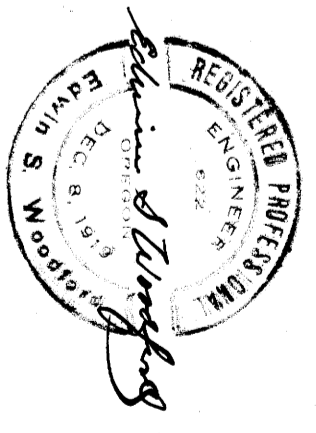


C.S. 1119 42/99



MAP  
SHOWING LANDS SURVEYED  
FOR  
C. E. DICKIE AND ALBERT KITCHING

SECTION 30 T<sub>30S</sub>-R<sub>6S</sub>-W<sub>11M</sub>,  
SCALE - 1" = 100'  
MARCH-1955.



FILED  
RECEIVED

JUN 25 1955

COUNTY SUPERVISOR  
DOUGLAS COUNTY, WIS.

COUNTY SUPERVISORS FILE DATA  
DO NOT REMOVE FROM OFFICE