

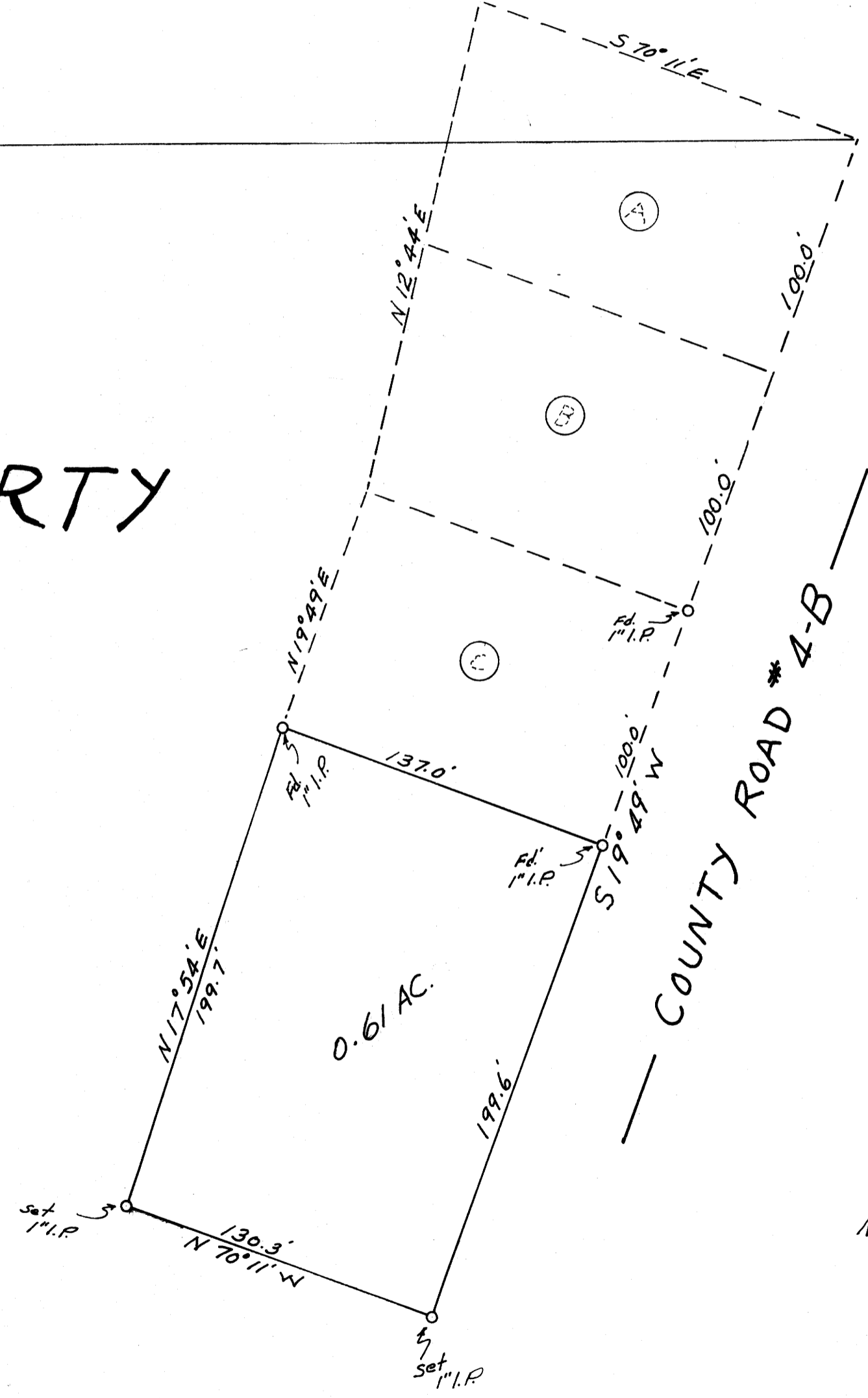
14 | 13
23 | 24

S 89° 31' E
1621.35

SURVEY OF THE JAY E. GAILEY PROPERTY

SEC. 24, T 27 S, R 5 W W. M.
DOUGLAS COUNTY, OREGON
JULY 1961 SCALE 1" = 50'

REGISTERED
OREGON
LAND SURVEYOR
Wm. B. Paulin
JULY 14, 1961
WM. B. PAULIN
552



FILED
RECEIVED *L.S.*
JUL 24 1961
COUNTY SURVEYOR
DOUGLAS COUNTY, ORE.

NOTE:
BASE BEARING OF S 19° 49' W IS
BASED ON PRIOR SURVEY BY
PERCY C. ARMSTRONG ON
FILE IN THE COUNTY SURVEYOR'S
OFFICE. SEE C.S. FILE 52/67
MAPFILE M 20/14.

