

SURVEY OF LOT 12, 13, & E 13.5 AC. LOT 14, PLAT E, UMPQUA PARK FRUIT LANDS, DOUGLAS COUNTY, OREGON

SURVEYED FOR: G. E. SPAULDING

JULY, 1961

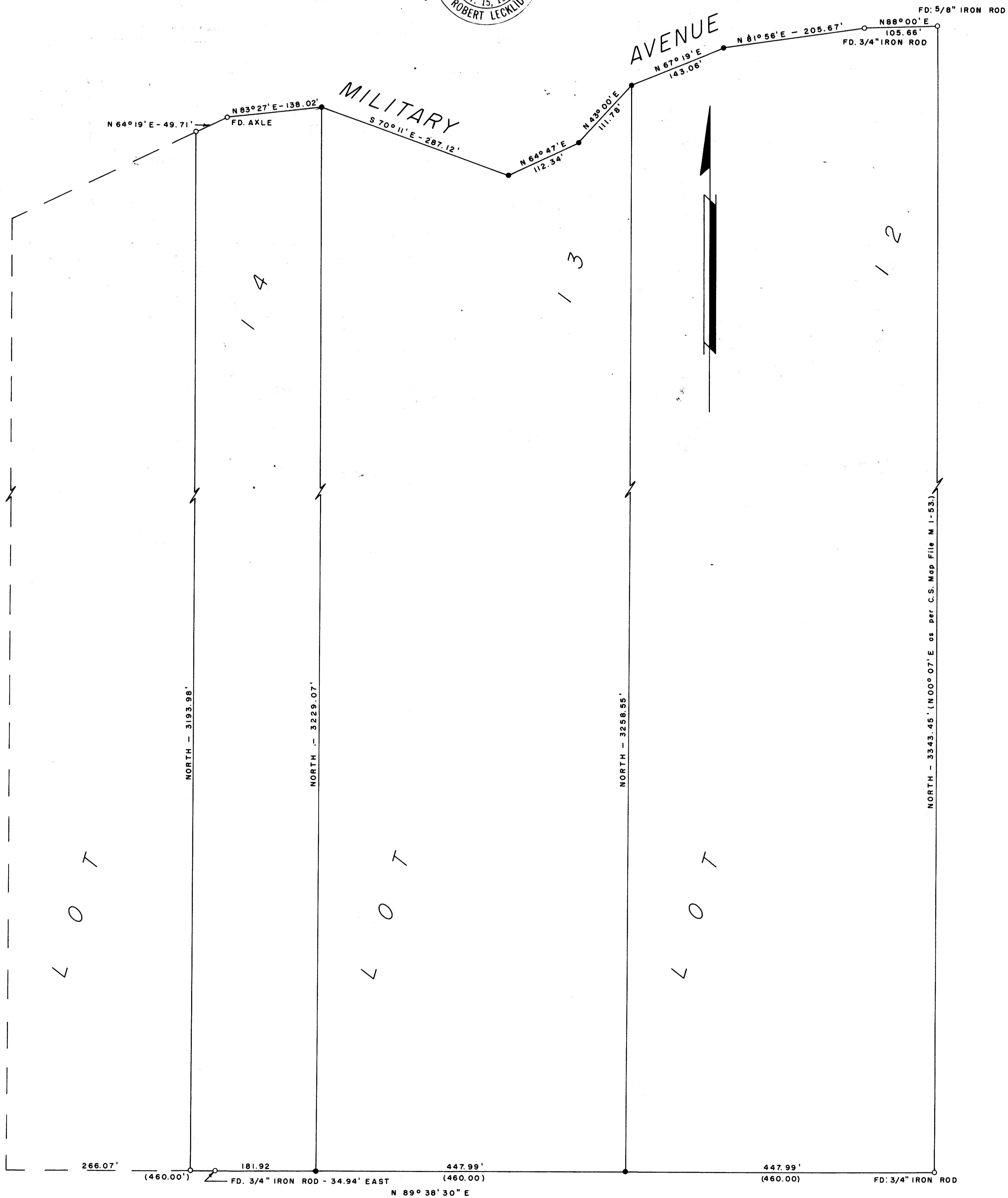
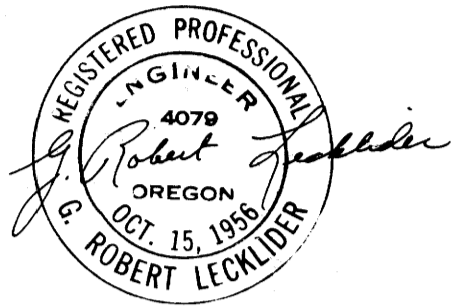
SURVEYED BY: G. R. LECKLIDER - ENGINEER

SCALE: 1" = 100'

○ DENOTES STEEL TUBE WITH SURVEY CAP FOUND UNLESS OTHERWISE NOTED.

● DENOTES STEEL TUBE WITH SURVEY CAP SET.

NOTE: SURVEY BASED ON PRIOR SURVEY IN C.S. MAP FILE M 20-49.



FILED
RECEIVED
JUL 17 1961
COUNTY SURVEYOR
DOUGLAS COUNTY, ORE.