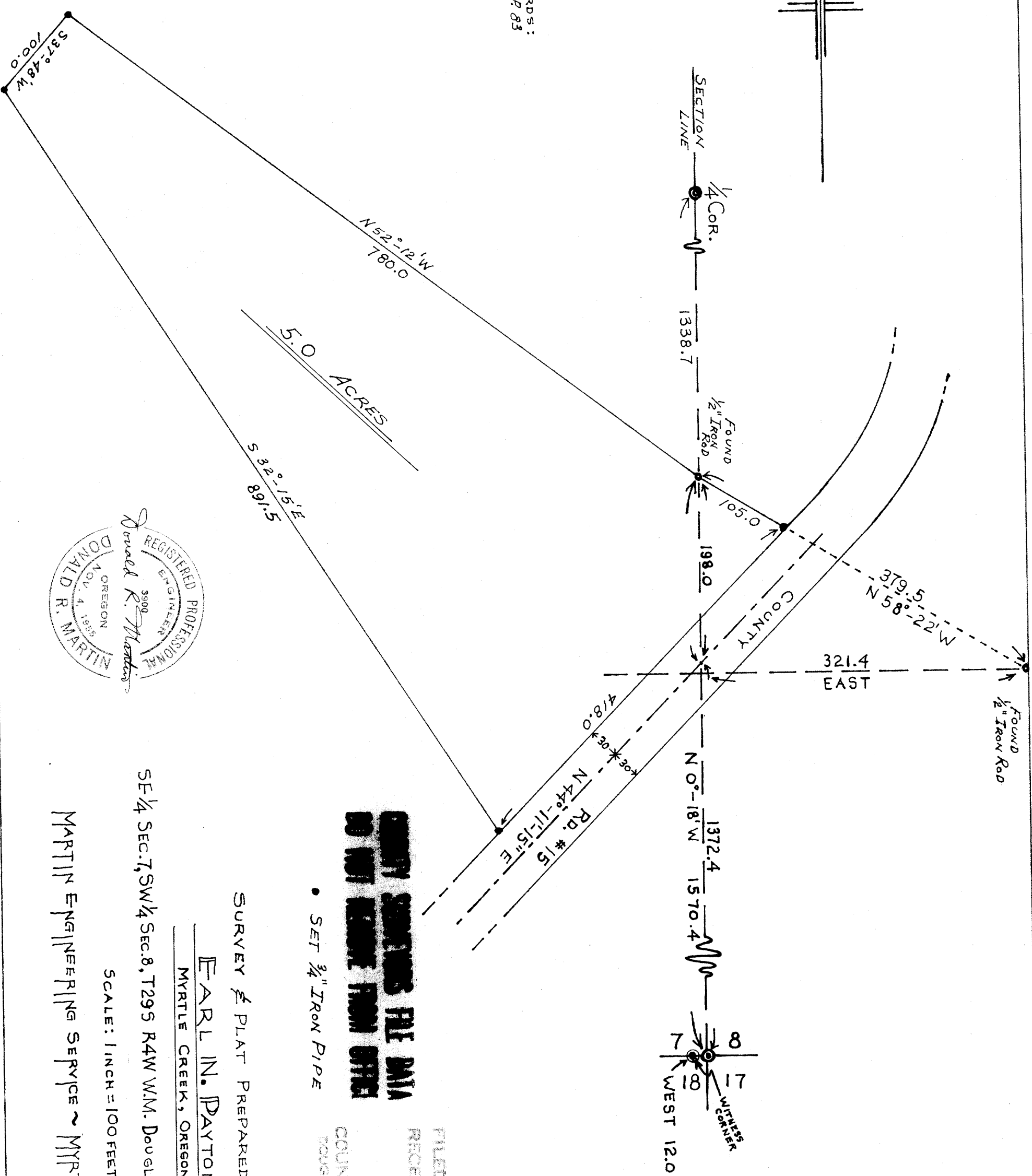


DOUGLAS COUNTY DEED RECORDS:  
Vol. 73 P. 163 AND Vol. 104 P. 83



**DO NOT REMOVE FILE DATA  
DO NOT REMOVE FROM OFFICE**

• SET 3/4" IRON PIPE

SURVEY & PLAT PREPARED FOR

EARL N. DAYTON

MYRTLE CREEK, OREGON

SE 1/4 SEC. 7, SW 1/4 SEC. 8, T29S R4W W.M. DOUGLAS COUNTY, OREGON

SCALE: 1 INCH = 100 FEET

MARTIN ENGINEERING SERVICE ~ MYRTLE CREEK, ORE.

JUNE 1961

FILED & RECEIVED  
JUN 2 1961  
COUNTY SURVEYOR  
DOUGLAS COUNTY, ORE.