

L-02W

COUNTY SURVEYORS FILE DATA  
DO NOT REMOVE FROM OFFICE

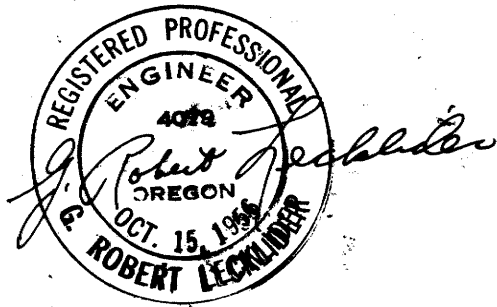
# SURVEY TO SET PROPERTY CORNER IN LOT 8, SEC. 16, T. 26 S., R. 4 W., W.M.

SURVEYED FOR: E. L. LESTER

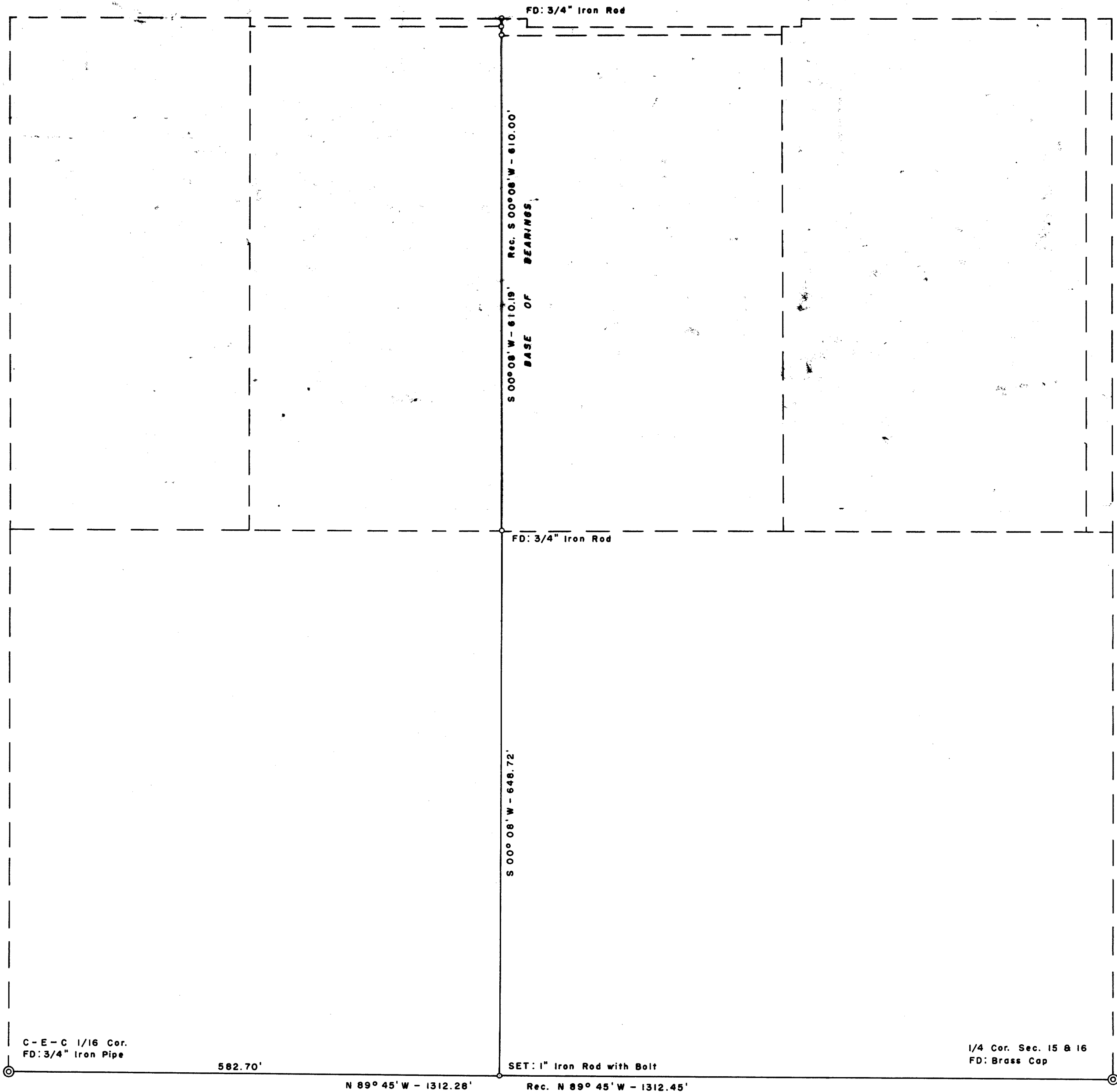
JANUARY, 1961

SURVEYED BY: G. R. LECKLIDER - ENGINEER

SCALE: 1" = 100'



COUNTY ROAD NO. 223



NOTE: REFER TO C.S. FILE 49/131 AND  
MAP FILE M 13-67.

FILED *LL*  
RECEIVED

JAN 13 1961

COUNTY SURVEYOR  
DOUGLAS COUNTY, ORE.