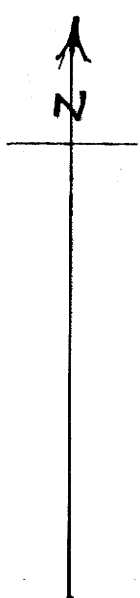
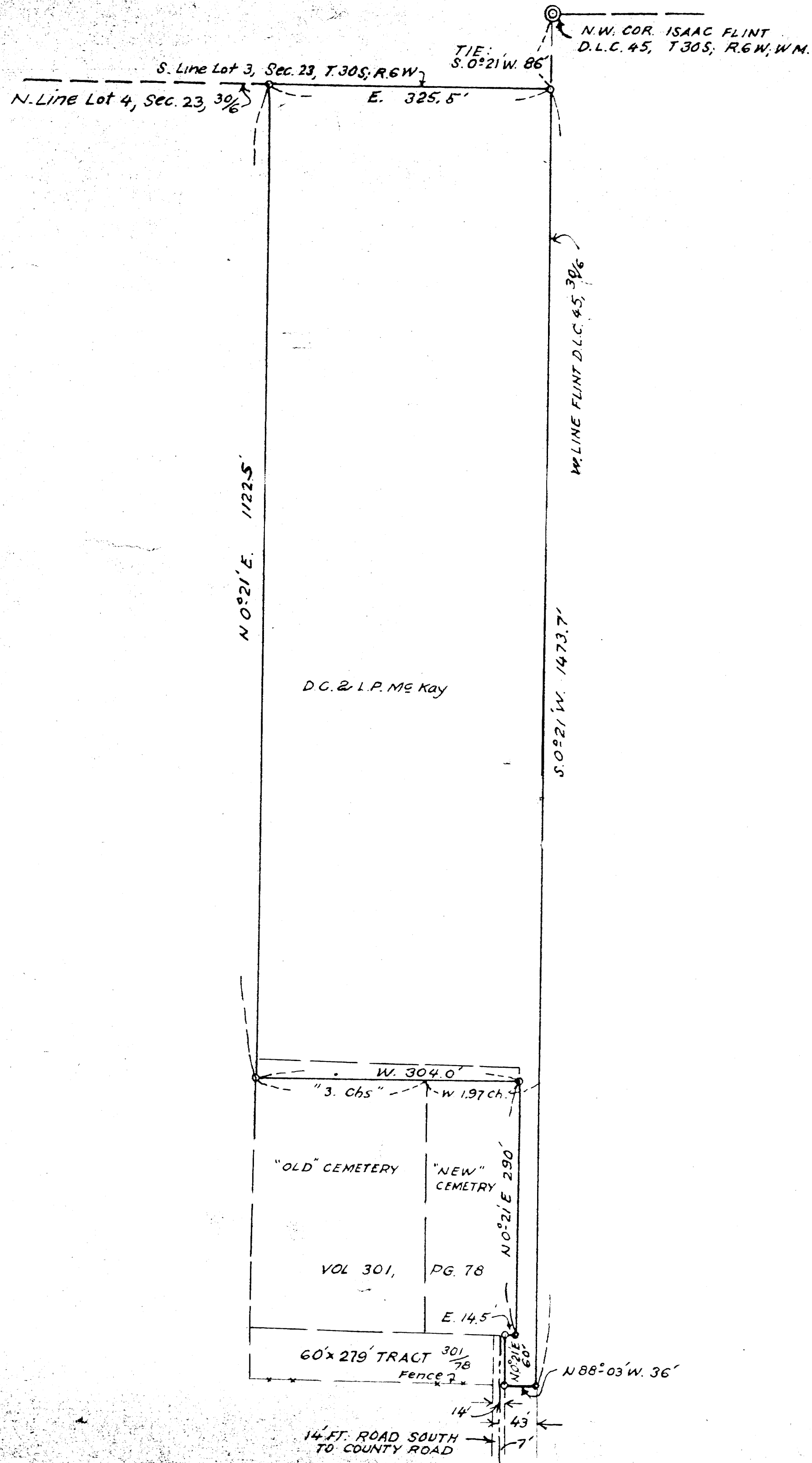


M 20 - 68



M 20 - 68

THIS COPY MADE FROM
 A XEROX 2510
 DATE July 19, 89

FILED
 RECEIVED

JUN 26 1961

COUNTY SURVEYOR
 DOUGLAS COUNTY ORE.

D.C. & L.P. MCKAY TO
 RIDDLE CEMETERY MAINTENANCE DIST.
 IN SEC. 23, T. 30S, R. 6W, W.M.,
 DOUGLAS COUNTY OREGON.
 MAY, 1961

Arthur Boyer

1" = 100 ft.

COUNTY SURVEYOR'S FILE
 DO NOT REMOVE FROM OFFICE