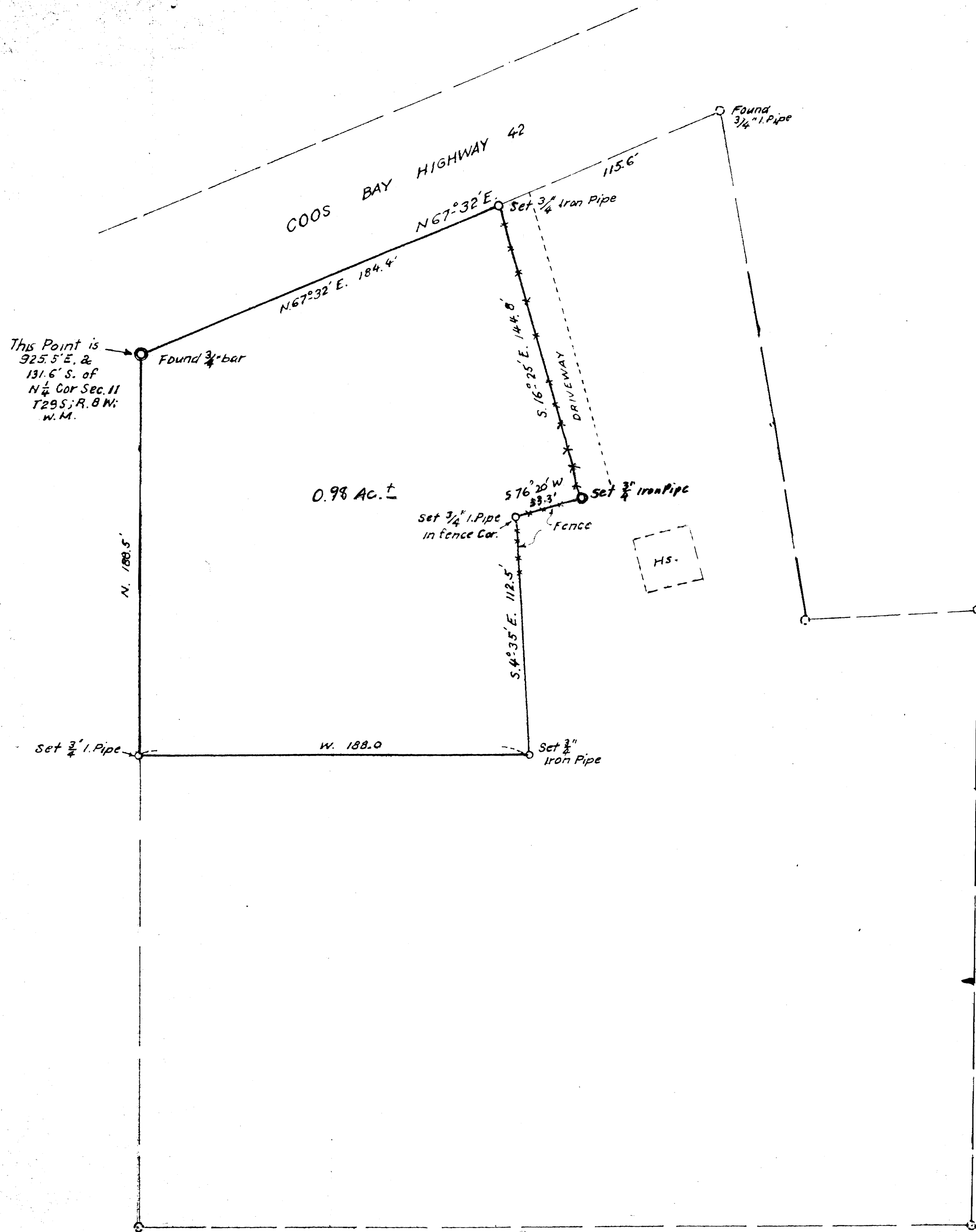


M 20-64



THIS COPY MADE FROM
 A XEROX 2510
 DATE July 19, 89



M 20-64

FILED
 RECEIVED
 JUN 26 1961
 COUNTY SURVEYOR
 DOUGLAS COUNTY, ORE.

COUNTY SURVEYORS FILE DATA
 DO NOT REMOVE FROM OFFICE

MRS MABLE NEWLUN TRACT
 TENMILE, ORE. ON COOS BAY HY 42.
 ACREAGE FOR TRANSFER, IN N.W. COR. TRACT
 IN NE 1/4 SEC. 11, T29S, R. 8 W; W.M.,
 DOUGLAS COUNTY, ORE.
 MAR. 1961

Arthur Boyer

1" = 40 ft.