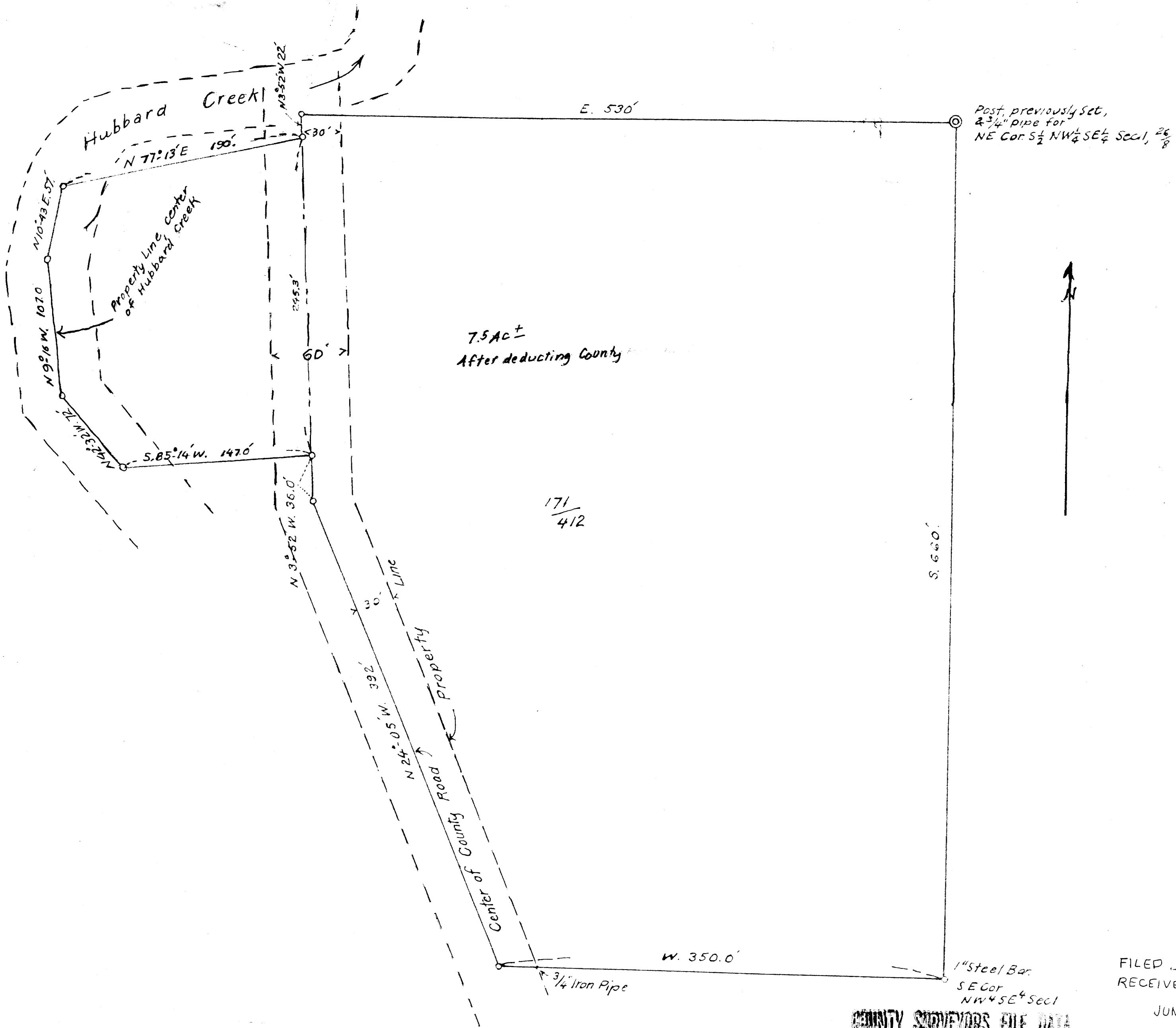


M 20-63



THIS COPY MADE FROM
A XEROX 2510
DATE July 18, 89

**COUNTY SURVEYORS FILE DATA
DO NOT REMOVE FROM OFFICE**

FILED
RECEIVED
JUN 26 1961
COUNTY SURVEYOR
DOUGLAS COUNTY ORE.

C.R. BRIGGS & JOYCE BRIGGS
ACREAGE IN S 1/2 NW 4 SE 4 SEC. 1, T.26S; R.8W; WM.
DOUGLAS COUNTY, ORE.
MAR. 1961
Arthur Briggs
1" = 60 FT.

M 20-63