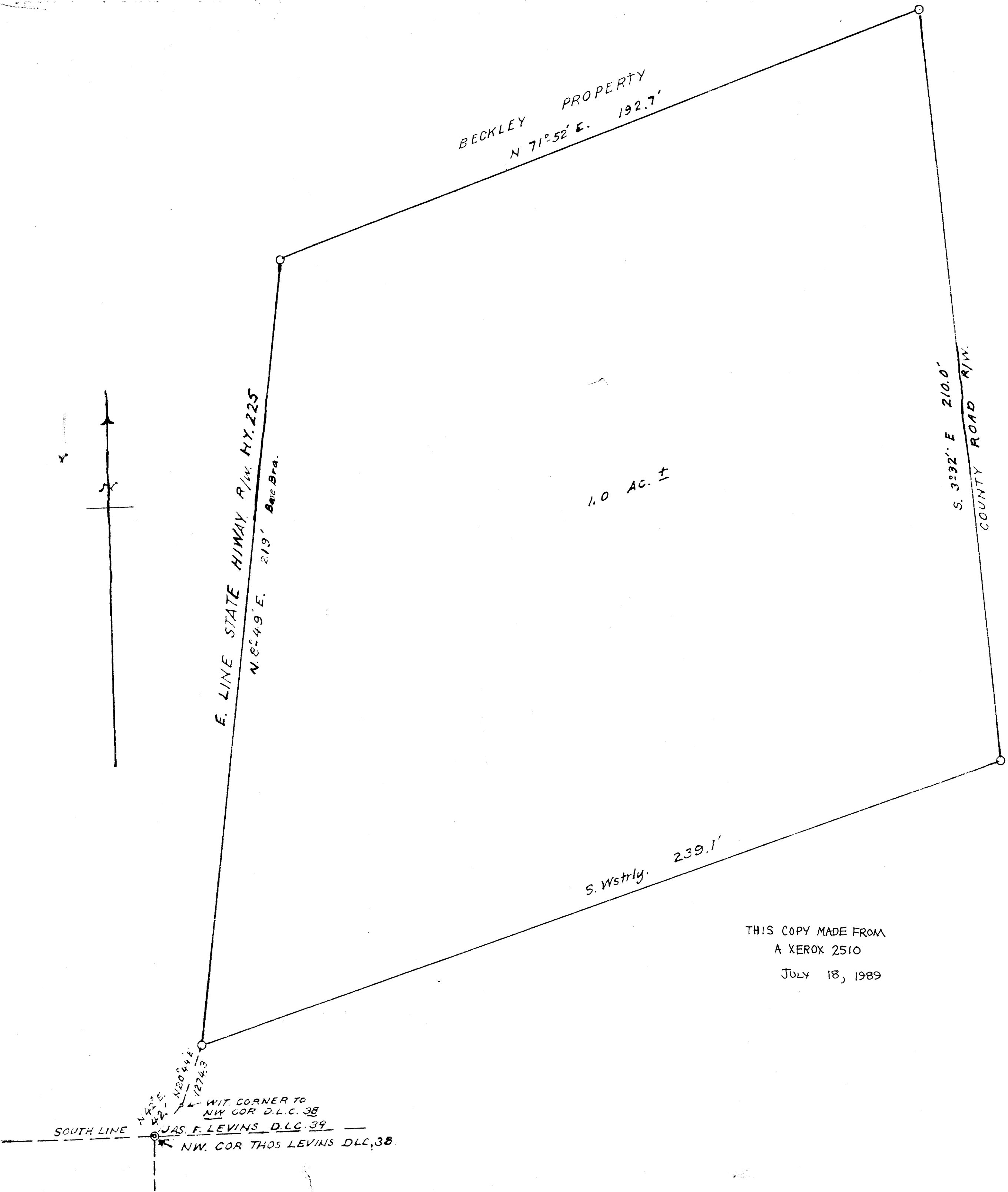


M 20-61



1.0 AC. ±

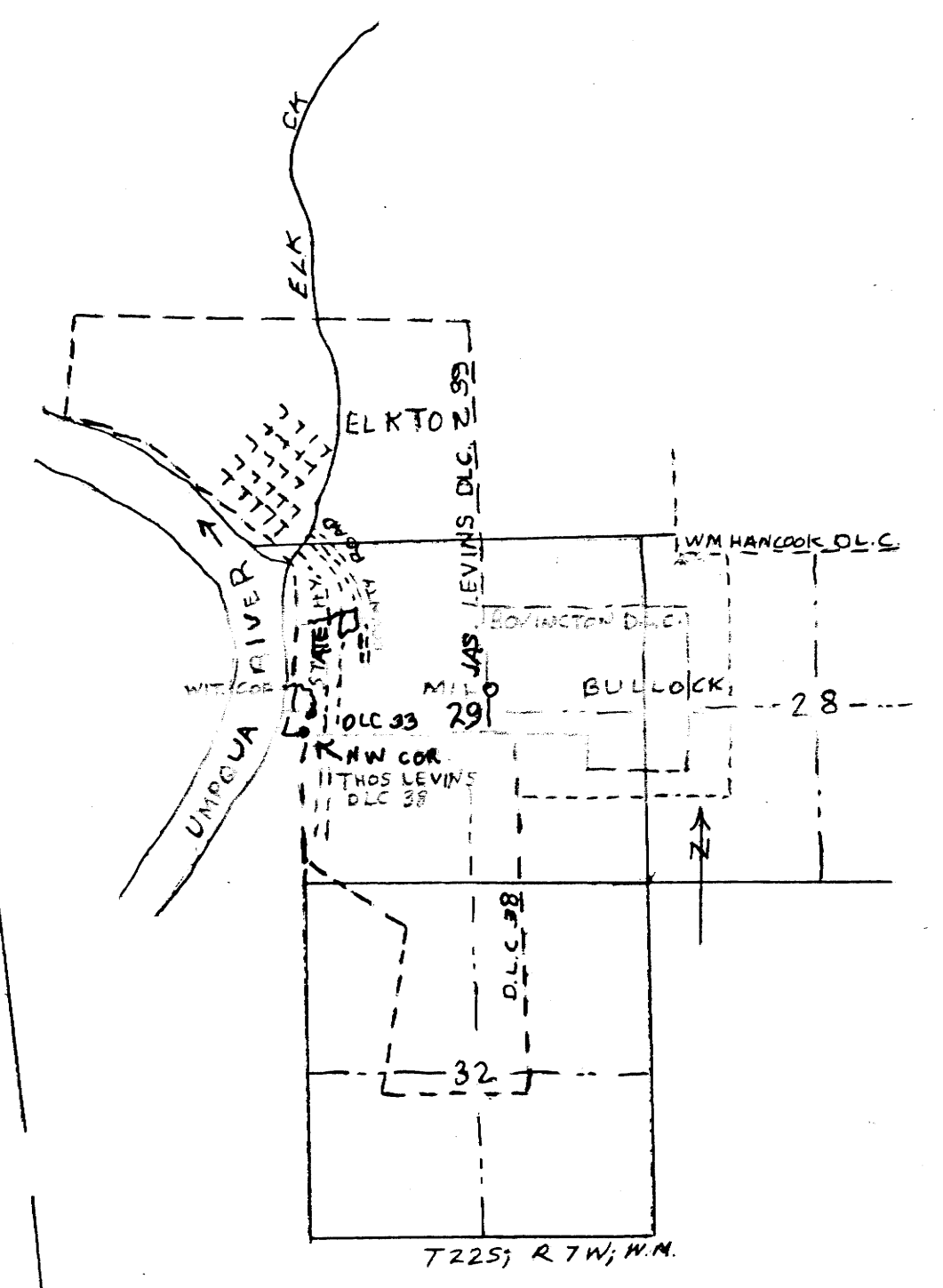
BECKLEY PROPERTY
N 71° 52' E. 192.7'

E. LINE STATE HIGHWAY R/W H.Y. 225
N 82° 49' E. 219' Base Bra.

S. 33° 2' E 210.0'
COUNTY ROAD R/W.

S. Wstrly. 239.1'

THIS COPY MADE FROM
A XEROX 2510
JULY 18, 1989



FILED
RECEIVED
JUN 26 1961
COUNTY SURVEYOR
DOUGLAS COUNTY, ORE.

MILO BULLOCK
ONE ACRE TRACT IN
JAS. LEVINS DON LAND CLAIM IN
SEC. 29, T. 22S, R. 7W, WIL. MER.
DOUGLAS COUNTY, ORE.
FEB 1961
1" = 20 FT

COUNTY SURVEYORS FILE DATA
DO NOT REMOVE FROM OFFICE

M 20-61