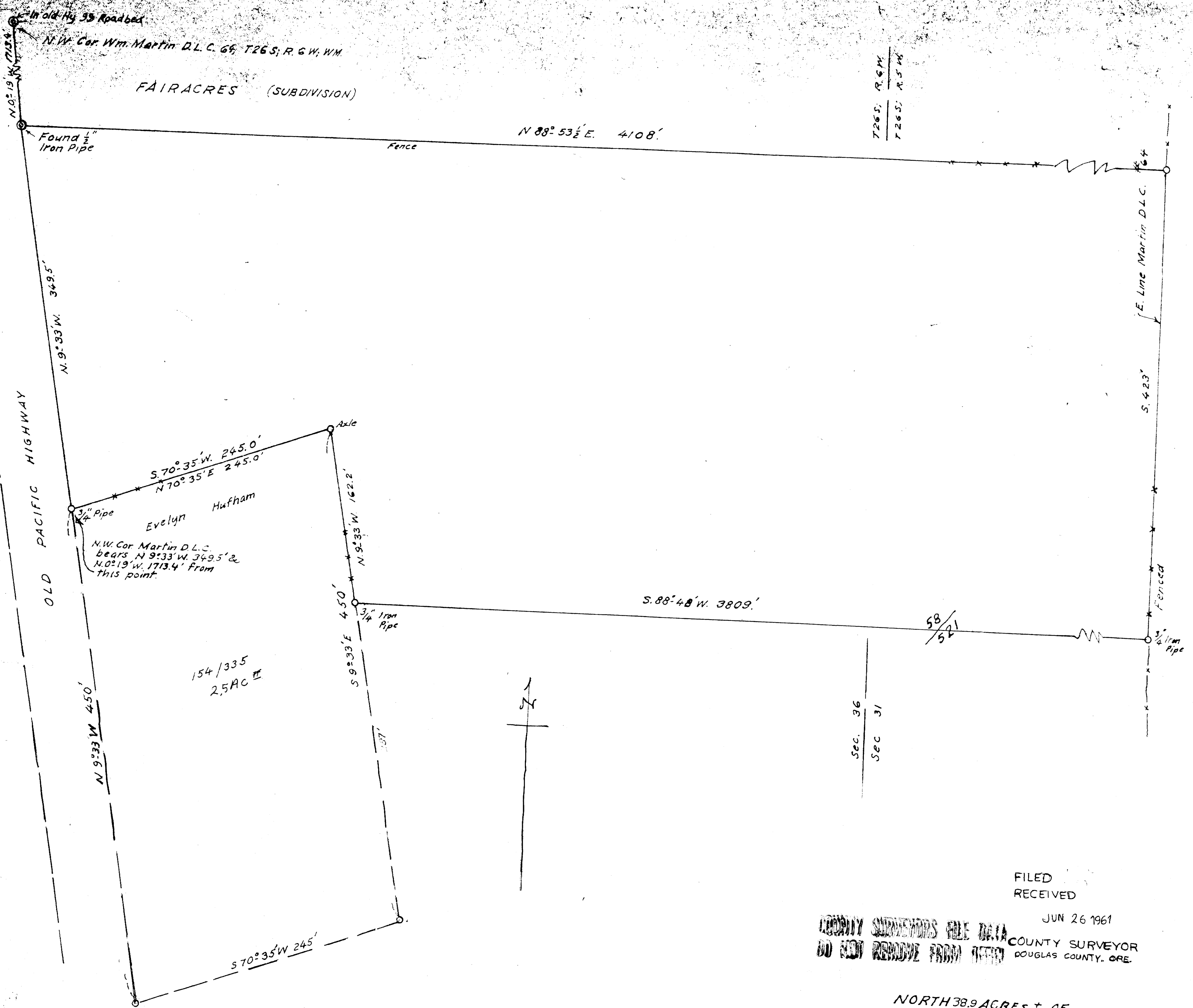


M 20-60



T26S;	R. 6W.
T26S;	R. 5W.

Sec. 36
Sec 31

FILED
RECEIVED

JUN 26 1961

COUNTY SUPERVISORS FILE DATA
DO NOT REMOVE FROM OFFICE

COUNTY SURVEYOR
DOUGLAS COUNTY, ORE.

THIS COPY MADE FROM
A XEROX 2510
DATE July 18, 89

NORTH 38.9 ACRES ± OF
GILLAM PROPERTY IN
WM. MARTIN DON. LAND CLM.
IN SEC'S 36 & 31, T26S, R5 S 26 W, WM.
Feb. 1961
Arthur Eger 1" = 60 ft.

MAP FILE M 20-60