

9-02-W

COUNTY SURVEYOR
DO NOT REMOVE FROM OFFICE

ALEXANDER PARCELS

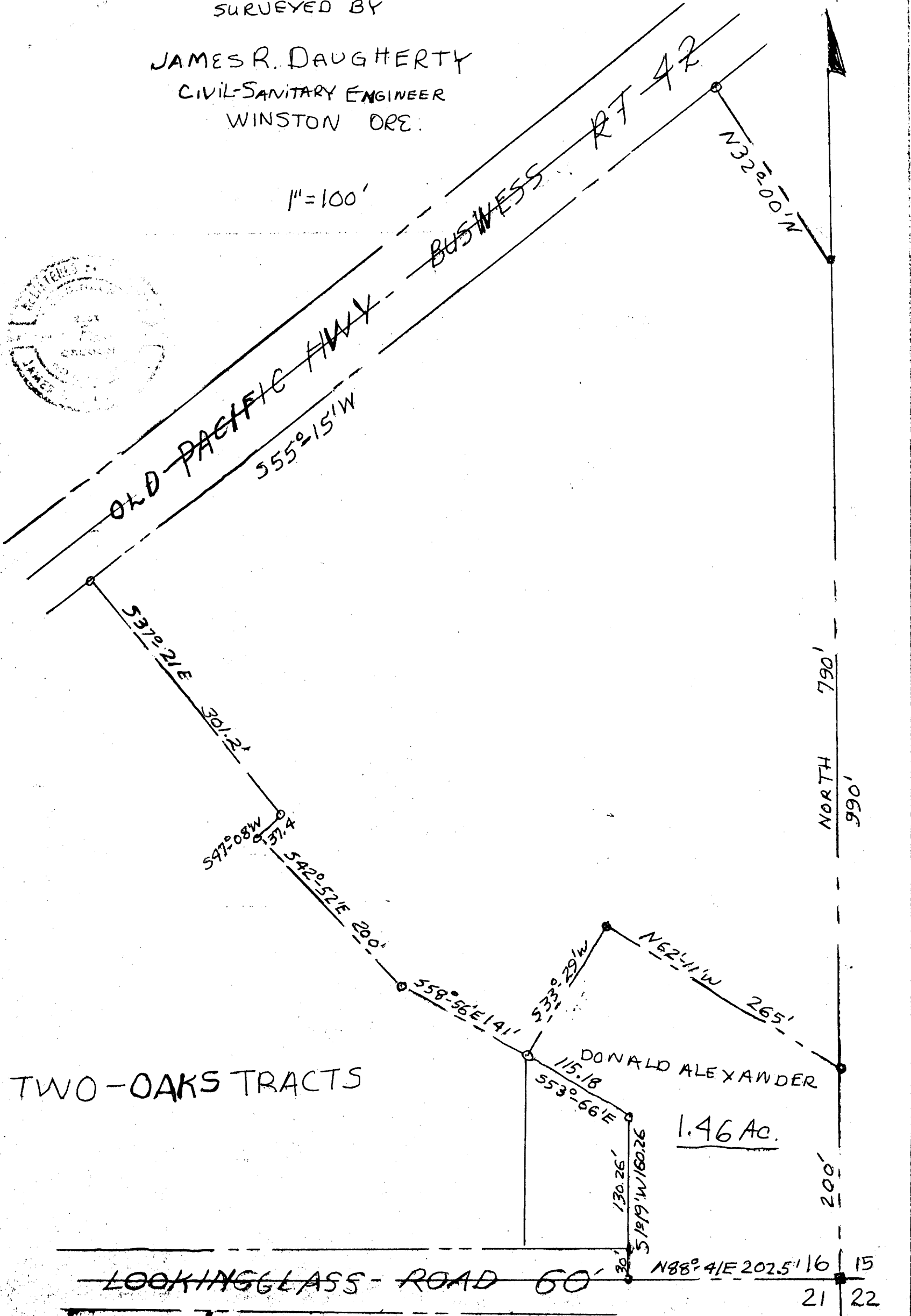
SECTION 16 · T28S · R6W · W.M.
DOUGLAS COUNTY · OREGON

FILED
RECEIVED
JAN 13 1961

COUNTY SURVEYOR
DOUGLAS COUNTY, ORE.

SURVEYED BY
JAMES R. DAUGHERTY
CIVIL-SANITARY ENGINEER
WINSTON ORE.

1"=100'



JAN. 6 1961

M 20-6

THIS COPY MADE FROM
A XEROX 2510
DATE July 14, 89