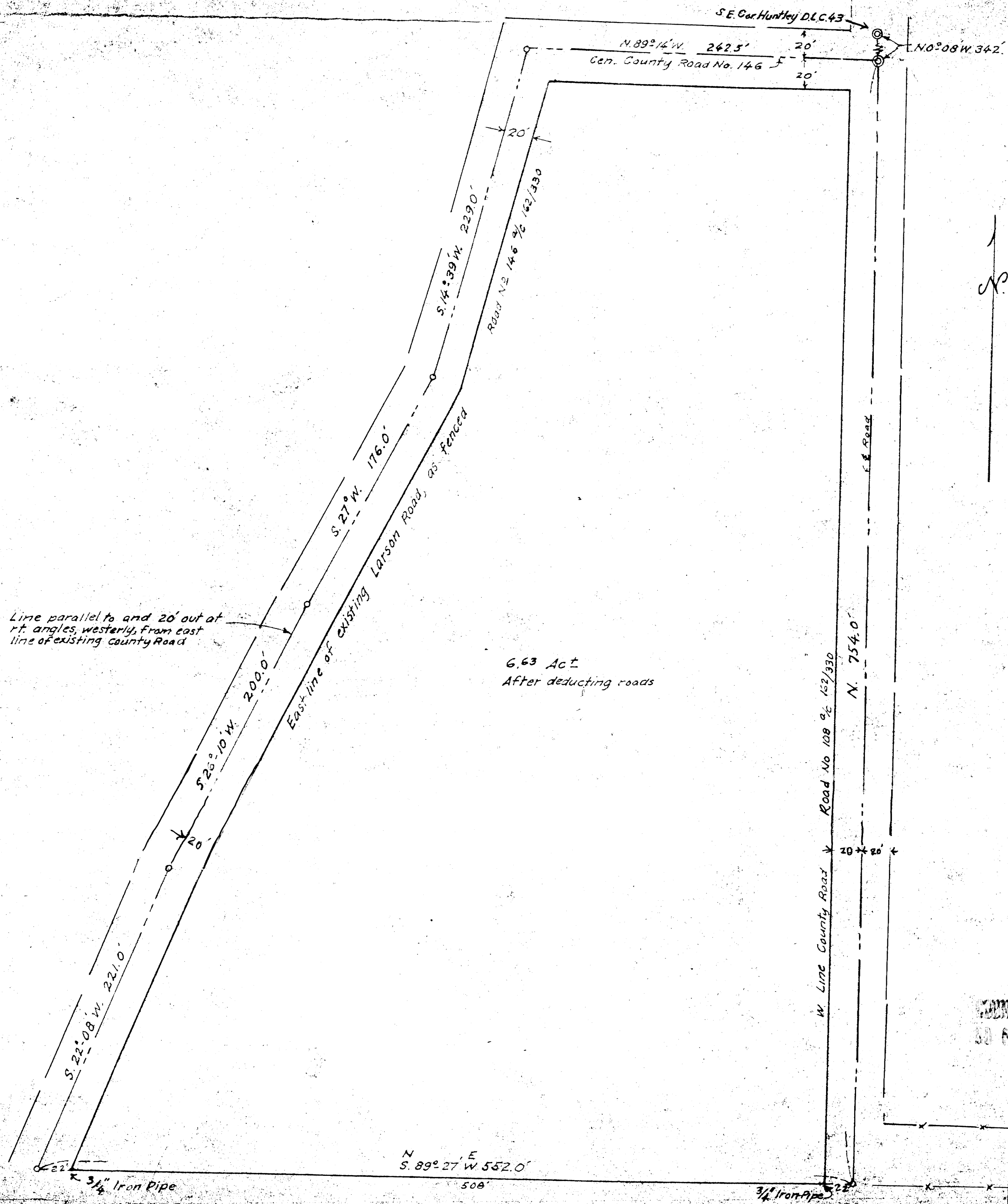


THIS COPY MADE FROM
A XEROX 2510
DATE July 18, 89



FILED
RECEIVED
JUN 26 1961
COUNTY SURVEYOR
DOUGLAS COUNTY, ORE

COUNTY SURVEYORS FILE DATA
DO NOT REMOVE FROM OFFICE

PORTION OF
MRS RUBY VANGE RANCH
IN SEC. 3, T.28 S., R.7 W., W.M.
LOOKING GLASS VALLEY
DOUGLAS COUNTY, ORE
JAN 1961
Arthur Dyer

M 20-59

M 20-59