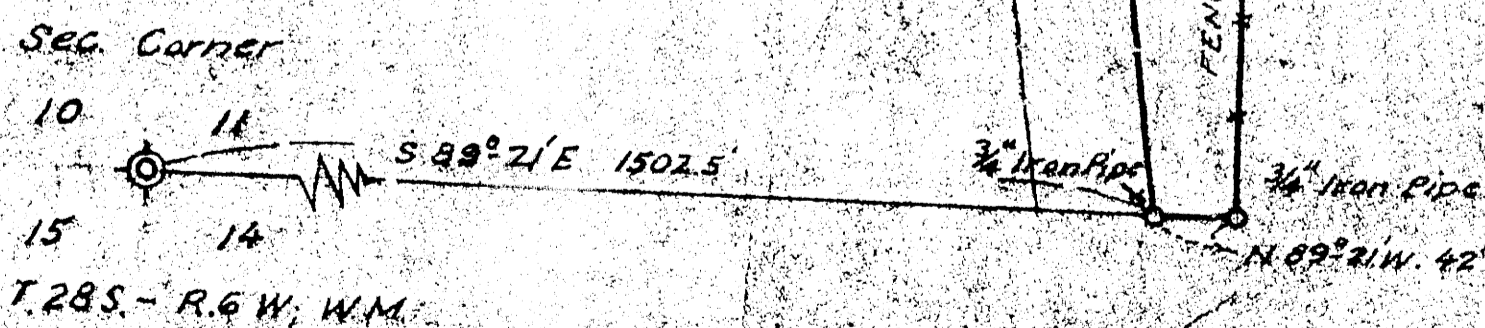
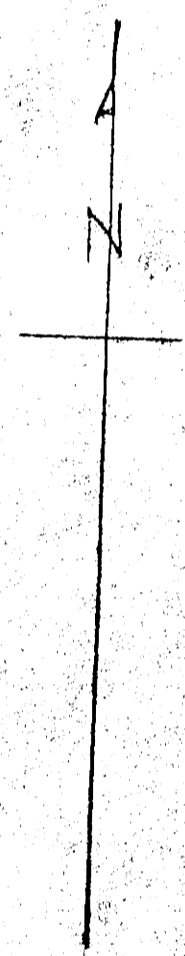
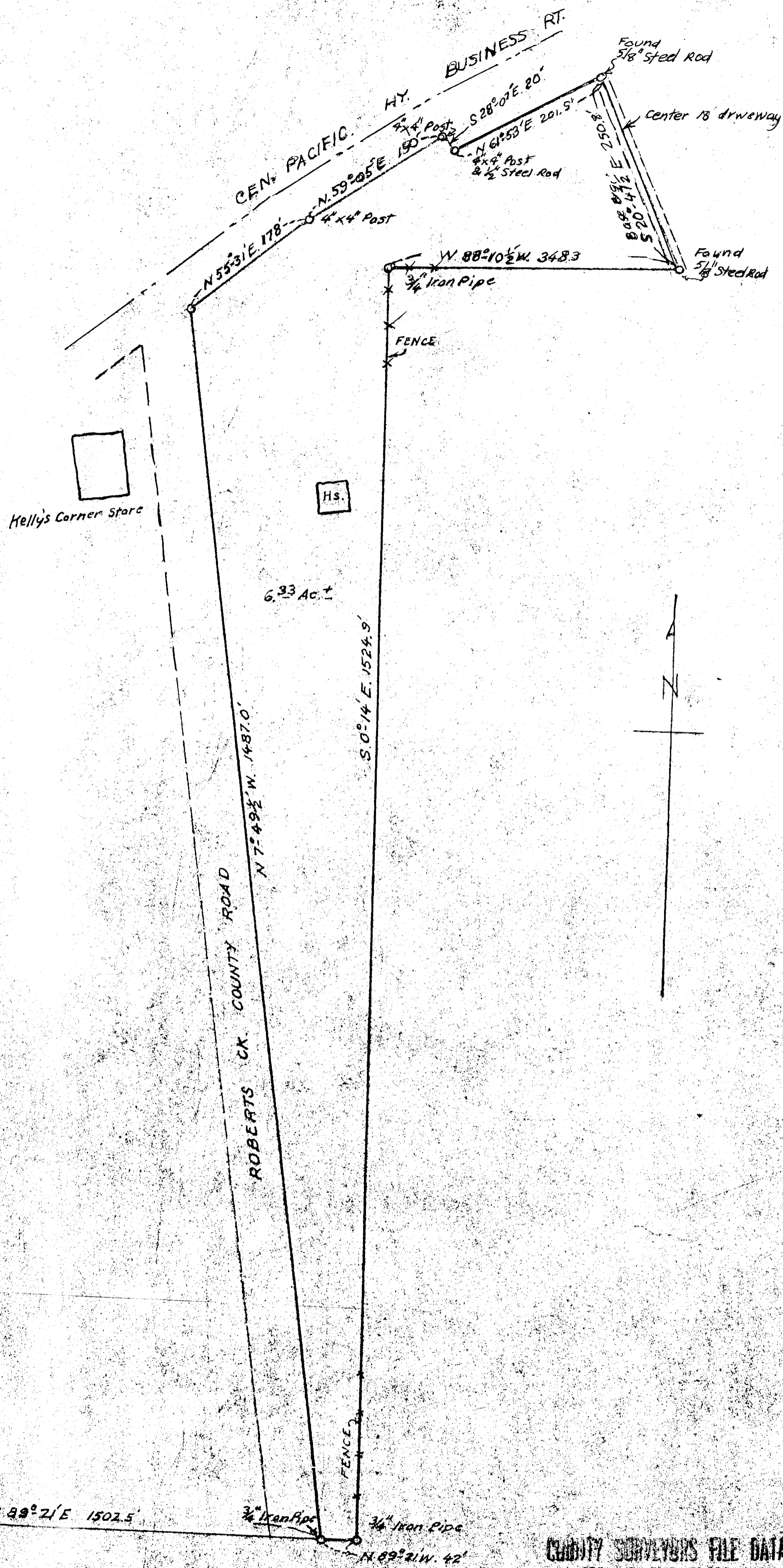


THIS COPY MADE FROM
A XEROX 2510
DATE July 18, 89



FILED *[Signature]*
RECEIVED
JUN 26 1961
COUNTY SURVEYOR
DOUGLAS COUNTY, ORE

COUNTY SURVEYORS FILE DATA
DO NOT REMOVE FROM OFFICE

KELLYS CORNER
FORMER NORM. FISHER PROPERTY
AT JUNCTION ROBERTS CK CO. ROAD
& PACIFIC HWY, BUSINESS ROUTE
IN SEC. 11, T.28S. R.6W. W.1/4 MER.
T.28S. DOUGLAS COUNTY, ORE
DEC. 1960 *[Signature]* 1" = 100 FT.