

LARRY JOHNSON PARCELS SECTIONS 29 & 32

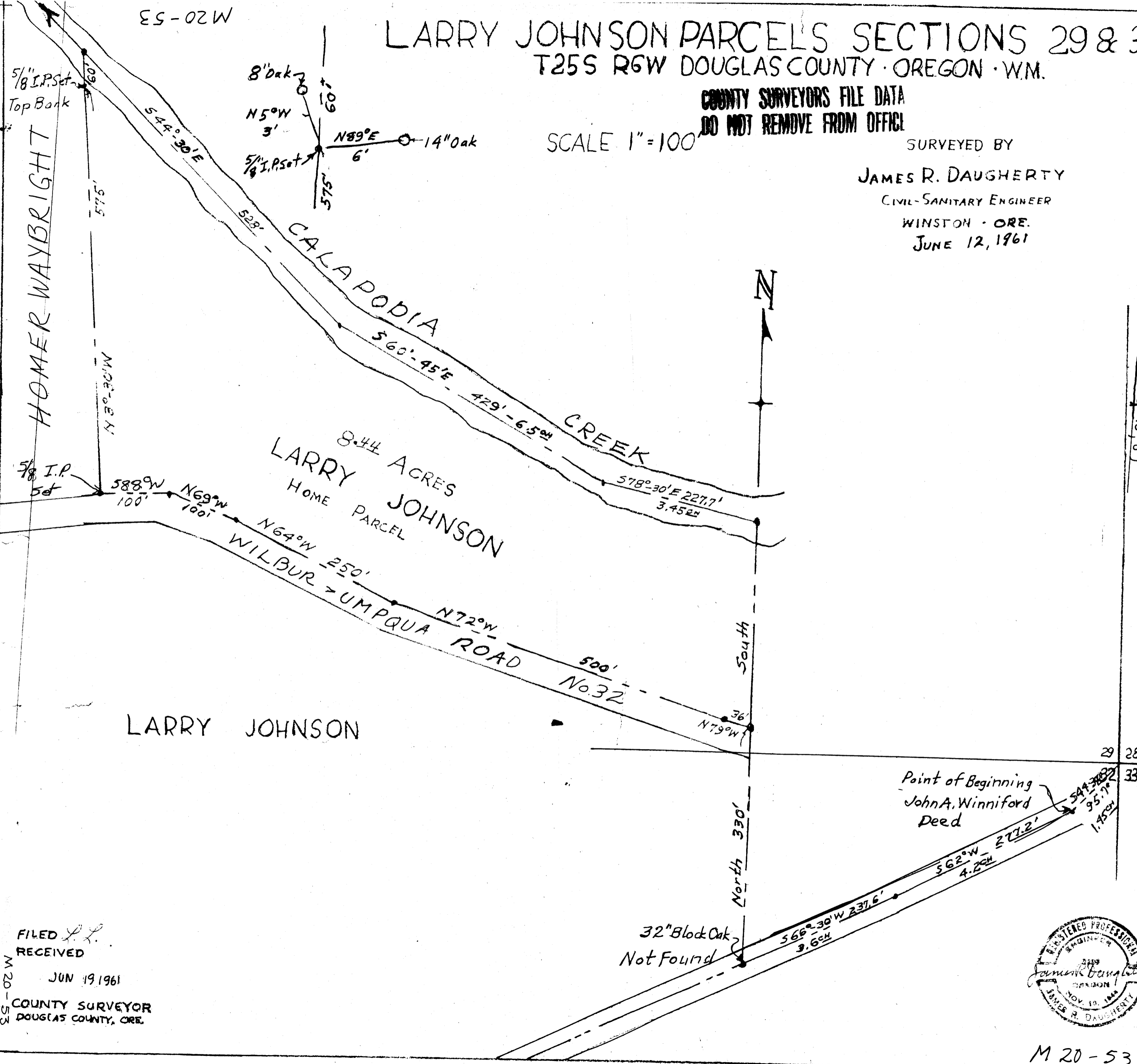
T25S R6W DOUGLAS COUNTY OREGON W.M.

COUNTY SURVEYORS FILE DATA
DO NOT REMOVE FROM OFFICE

SCALE 1"=100'

SURVEYED BY
JAMES R. DAUGHERTY
CIVIL-SANITARY ENGINEER
WINSTON ORE.
JUNE 12, 1961

THIS COPY MADE FROM
A XEROX 2510
DATE July 18, 89



FILED *LL*
RECEIVED
M 20-53
JUN 19 1961
COUNTY SURVEYOR
DOUGLAS COUNTY, ORE.



M 20-53

M 20-53