

COUNTY SURVEYORS FILE DATA
DO NOT REMOVE FROM OFFICE

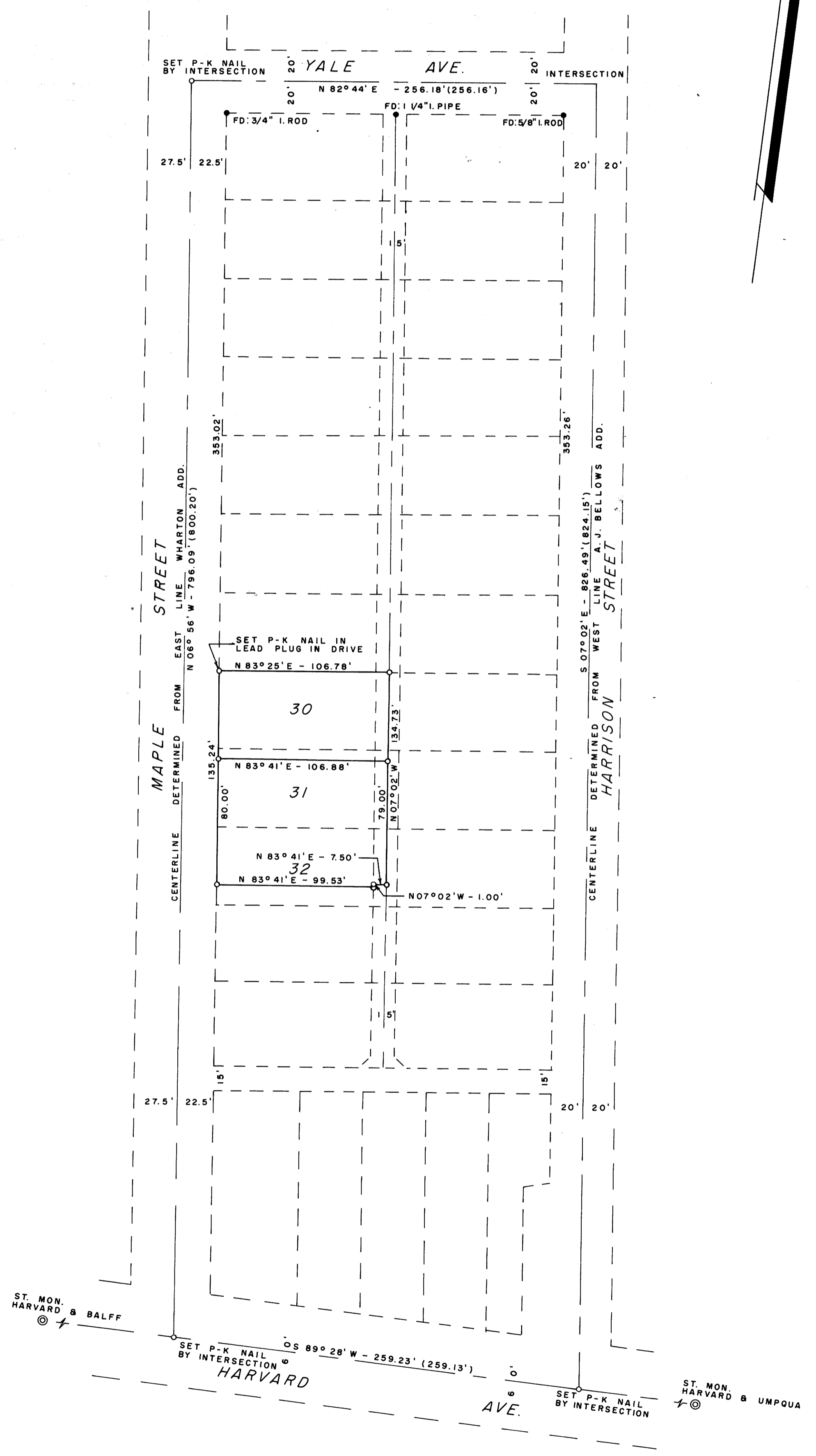
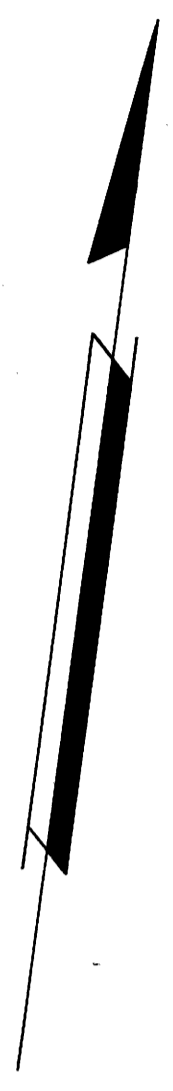
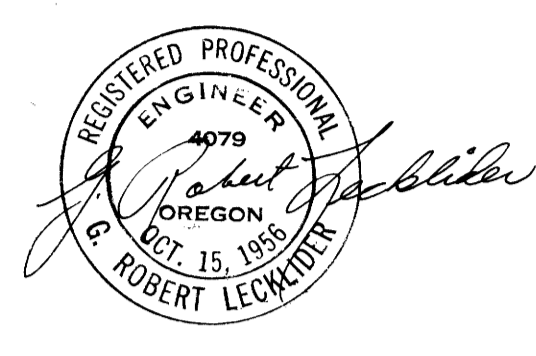
SURVEY IN LOTS 30, 31, & 32, MAYNARD'S HARVARD AVE. ADD., ROSEBURG, DOUG. COUNTY, OREGON.

SURVEYED FOR: WILLIAM LASSITER
SURVEYED BY: G. R. LECKLIDER - ENGINEER

JUNE, 1961
SCALE: 1" = 50'

O DENOTES STEEL TUBE WITH SURVEY CAP SET UNLESS OTHERWISE NOTED.

NOTE: REFER TO MAP FILE M 4-61.



FILED *l.f.*
RECEIVED

JUN 7 1961

COUNTY SURVEYOR
DOUGLAS COUNTY, ORE.