

# SURVEY TO ESTABLISH PROPERTY CORNERS IN SECTION 7, T. 29 S., R. 7 W., W. M.

SURVEYED FOR: A. F. WEBER

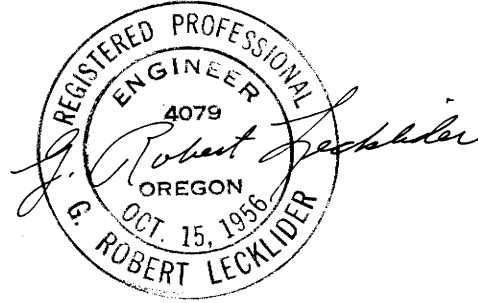
SURVEYED BY: G. R. LECKLIDER - ENGINEER

COUNTY SURVEYORS FILE DATA

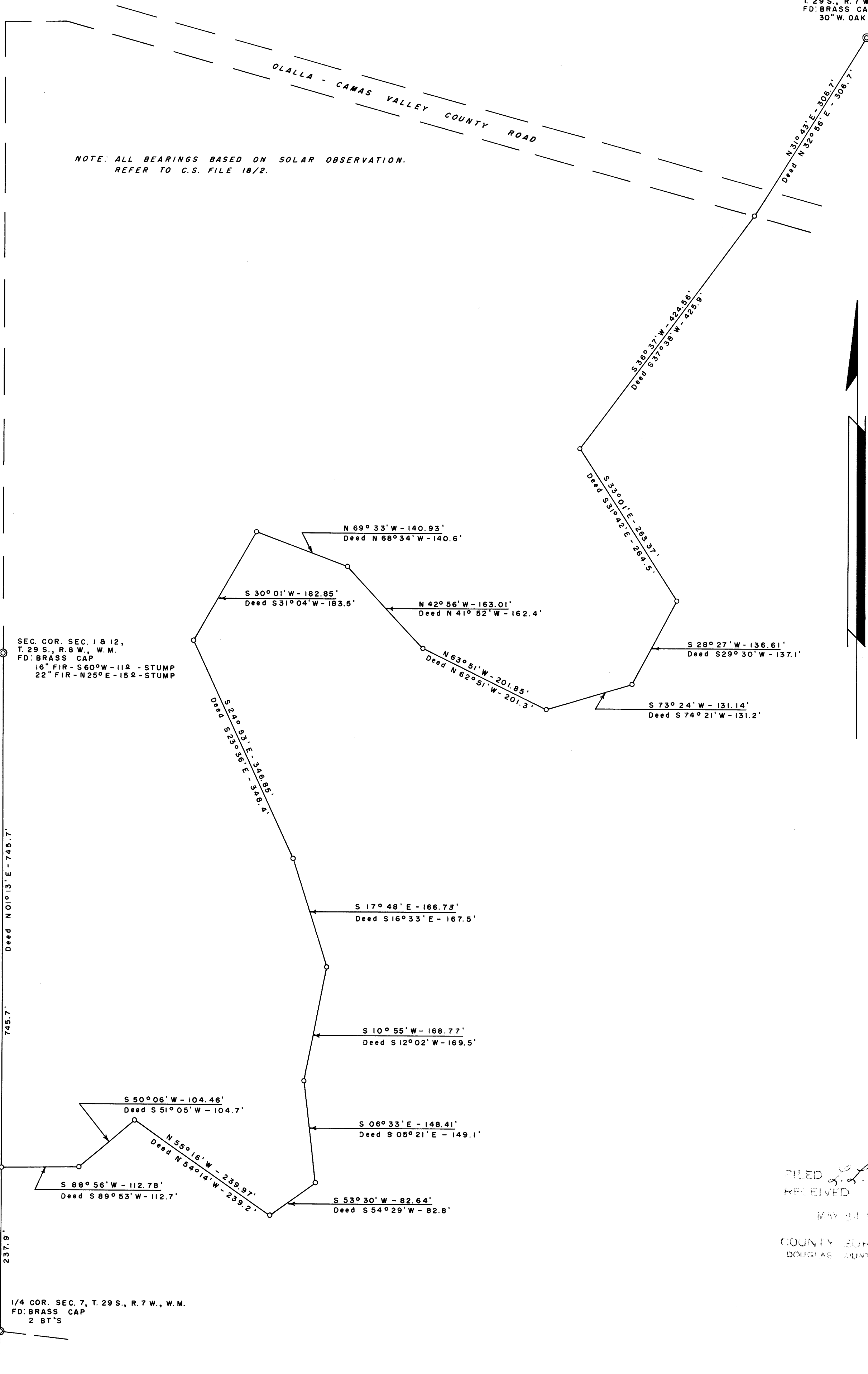
MAY, 1961

DO NOT REMOVE FROM OFFICE SCALE: 1" = 100'

○ DENOTES 5/8" IRON ROD SET



SE COR. D.L.C. No. 43,  
T. 29 S., R. 7 W., W.M.  
FD: BRASS CAP  
30" W. OAK - N 75° W - 283.8'



NOTE: ALL BEARINGS BASED ON SOLAR OBSERVATION.  
REFER TO C.S. FILE 18/2.



FILED *L.L.*  
RECEIVED

MAY 24 1961

COUNTY SURVEYOR  
DOUGLAS COUNTY, OREG.